

2020 City of Dallas Census Results

City Council Meeting
October 20, 2021

Sam Mathur
Priti Mathur

ARCBridge Consultant, Inc.
2021 Redistricting Consultant



Agenda



- 2020 Census Results
- Questions



2020 Census Results

Bureau of Census Released Data on 8/12

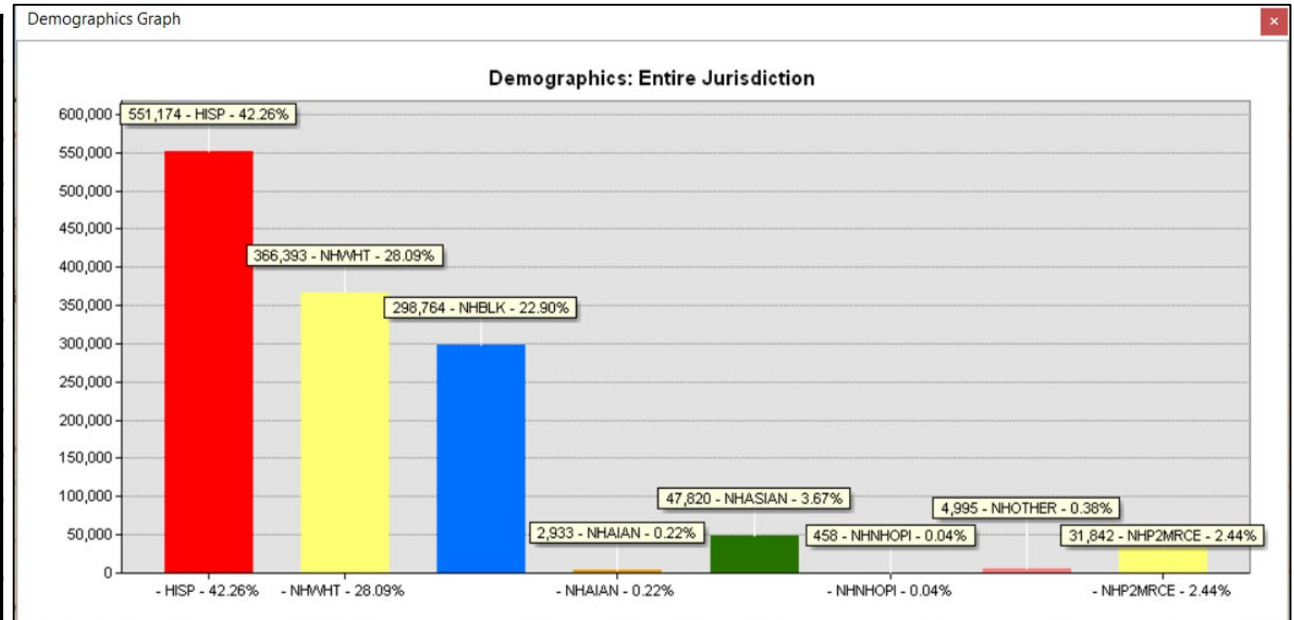


2010		
	Total	% Total
Hispanic:	507,309	42.35%
White:	345,205	28.82%
Black:	299,634	25.02%
AmerInd:	5,651	0.47%
Asian:	37,060	3.09%
Hawaiian:	525	0.04%
Other:	2,432	0.20%
	1,197,816	100.00%

2010 & 2020 - PL94-171 Census Data

Gain - 106,563

TOTAL DISTRICT	2020			
	Total Pop	% Total	Voting Age	% Voting
HISPANIC	551,174	42.26%	380,962	38.11%
NH WHITE	366,393	28.09%	318,767	31.89%
NH BLACK	298,764	22.90%	230,257	23.03%
NH NATIVE	2,933	0.22%	2,353	0.24%
ASIAN	47,820	3.67%	40,191	4.02%
HAWAIIAN PI	458	0.04%	354	0.04%
OTHER	4,995	0.38%	3,594	0.36%
MIXED 2+	31,842	2.44%	23,227	2.32%
Totals	1,304,379	100.00%	999,705	100.00%
Voting Age %			76.64%	



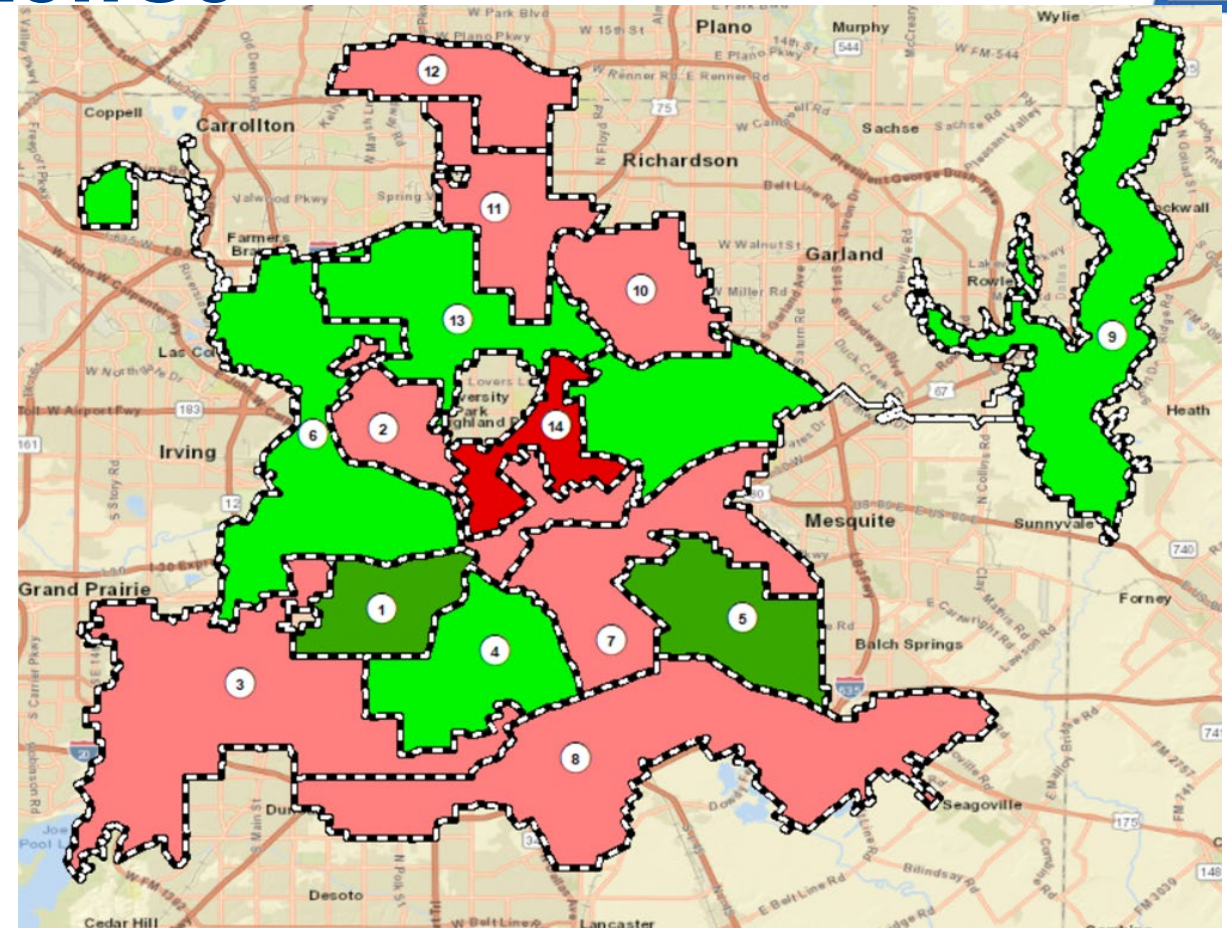
2020 Census Results (cont.)

Overall District Statistics



	2020	2010	Difference
Ideal Population	93,170	85,558	7,612
Maximum Deviation	31.14%	7.76%	23.38%

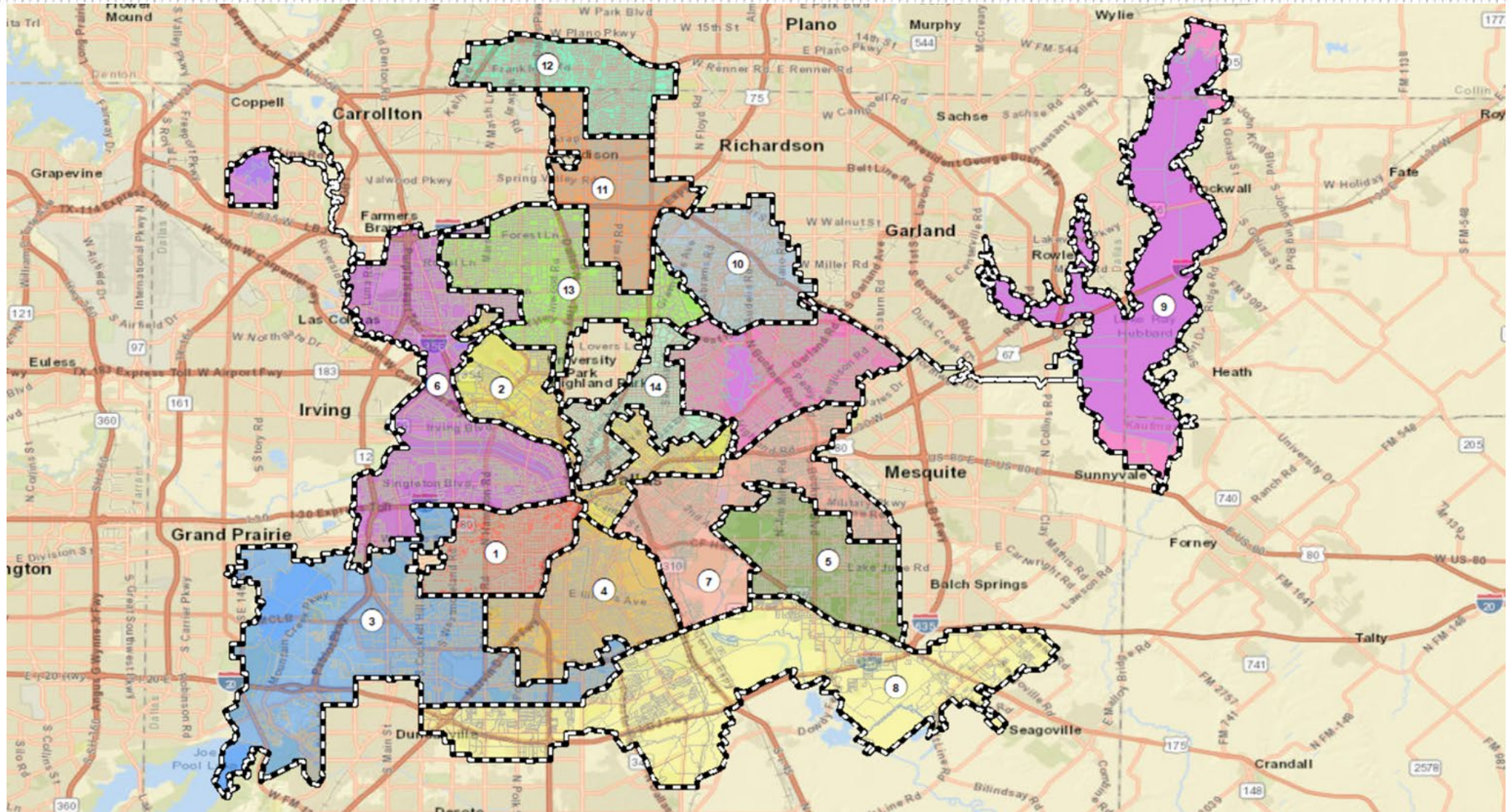
District Summary				
	Total Pop	Voting Age	Deviation	% Deviation
District 1	77,916	59,156	-15,254	-16.37%
District 2	95,419	80,912	2,249	2.41%
District 3	96,451	70,641	3,281	3.52%
District 4	89,903	64,625	-3,267	-3.51%
District 5	81,942	57,170	-11,228	-12.05%
District 6	87,191	64,204	-5,979	-6.42%
District 7	96,173	69,639	3,003	3.22%
District 8	100,487	68,418	7,317	7.85%
District 9	90,023	68,776	-3,147	-3.38%
District 10	98,464	73,315	5,294	5.68%
District 11	93,975	75,753	805	0.86%
District 12	98,347	79,342	5,177	5.56%
District 13	91,161	71,253	-2,009	-2.16%
District 14	106,927	96,501	13,757	14.77%
All Districts	1,304,379	999,705		



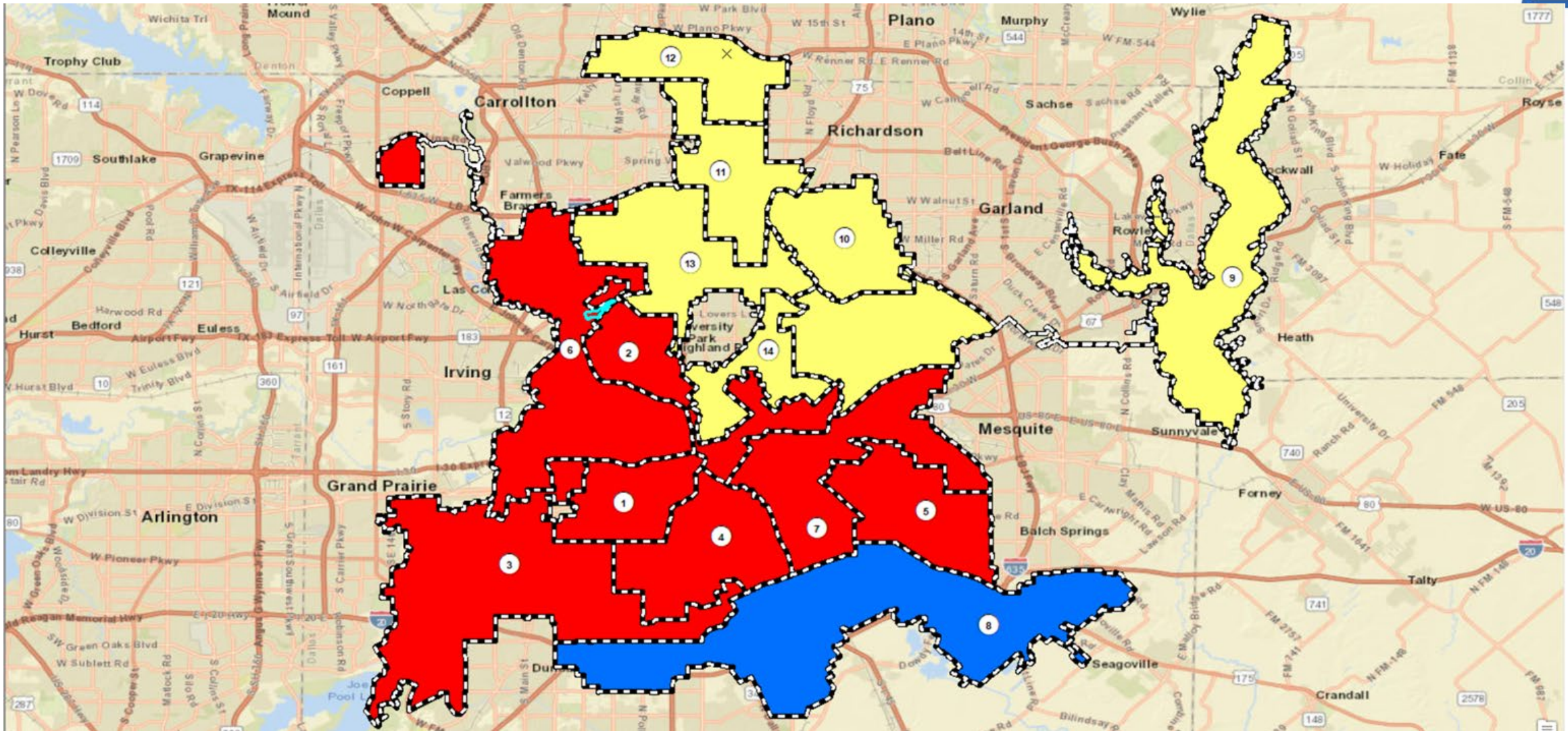
Comparison
with ideal
population



2020 Census Results (cont.) Current Districts



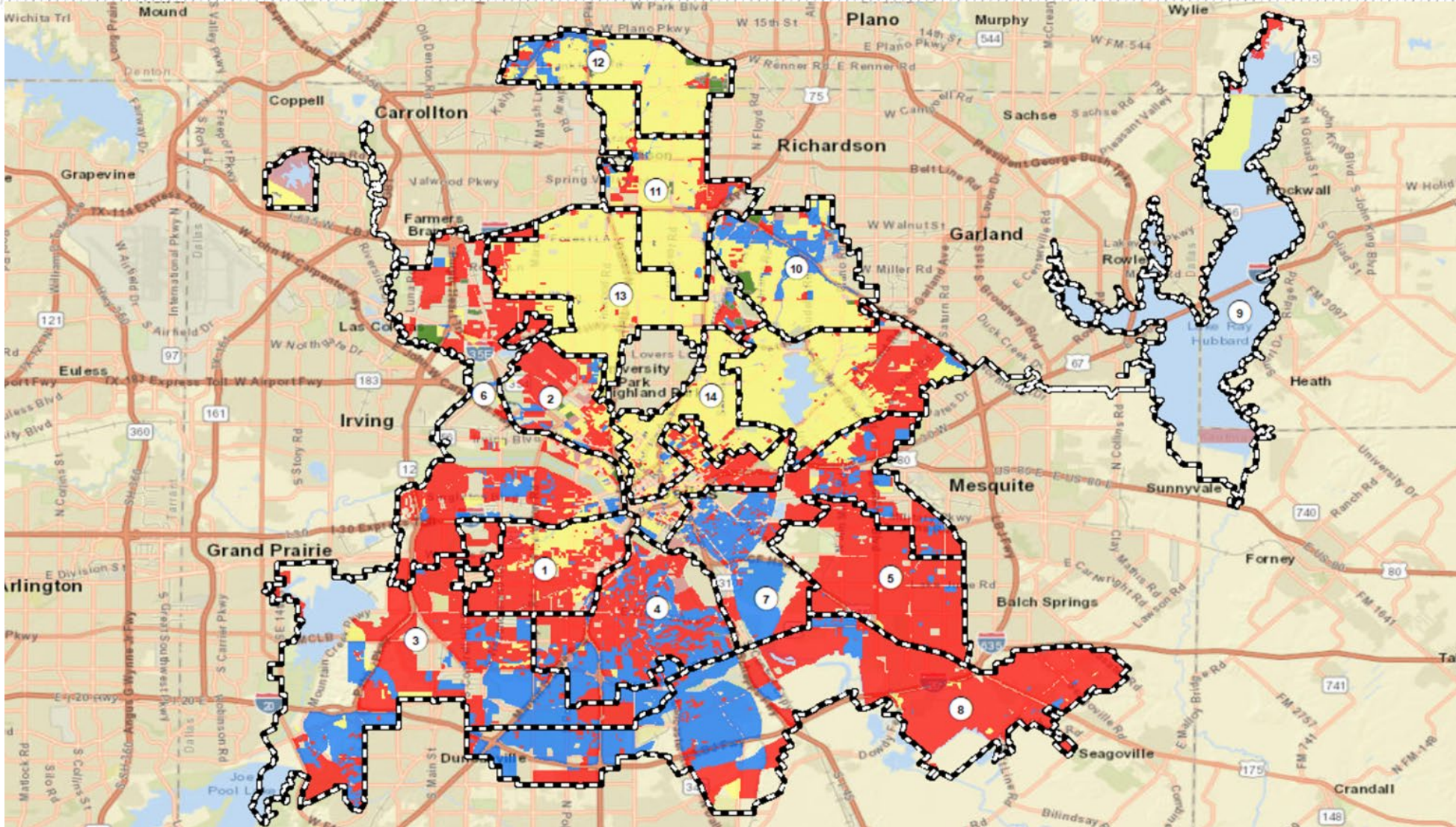
2020 Census Results (cont.) Majority Districts



(NH White – Yellow, Hisp – Red; NH Black – Blue)



2020 Census Results (cont.) Majority by Census Blocks

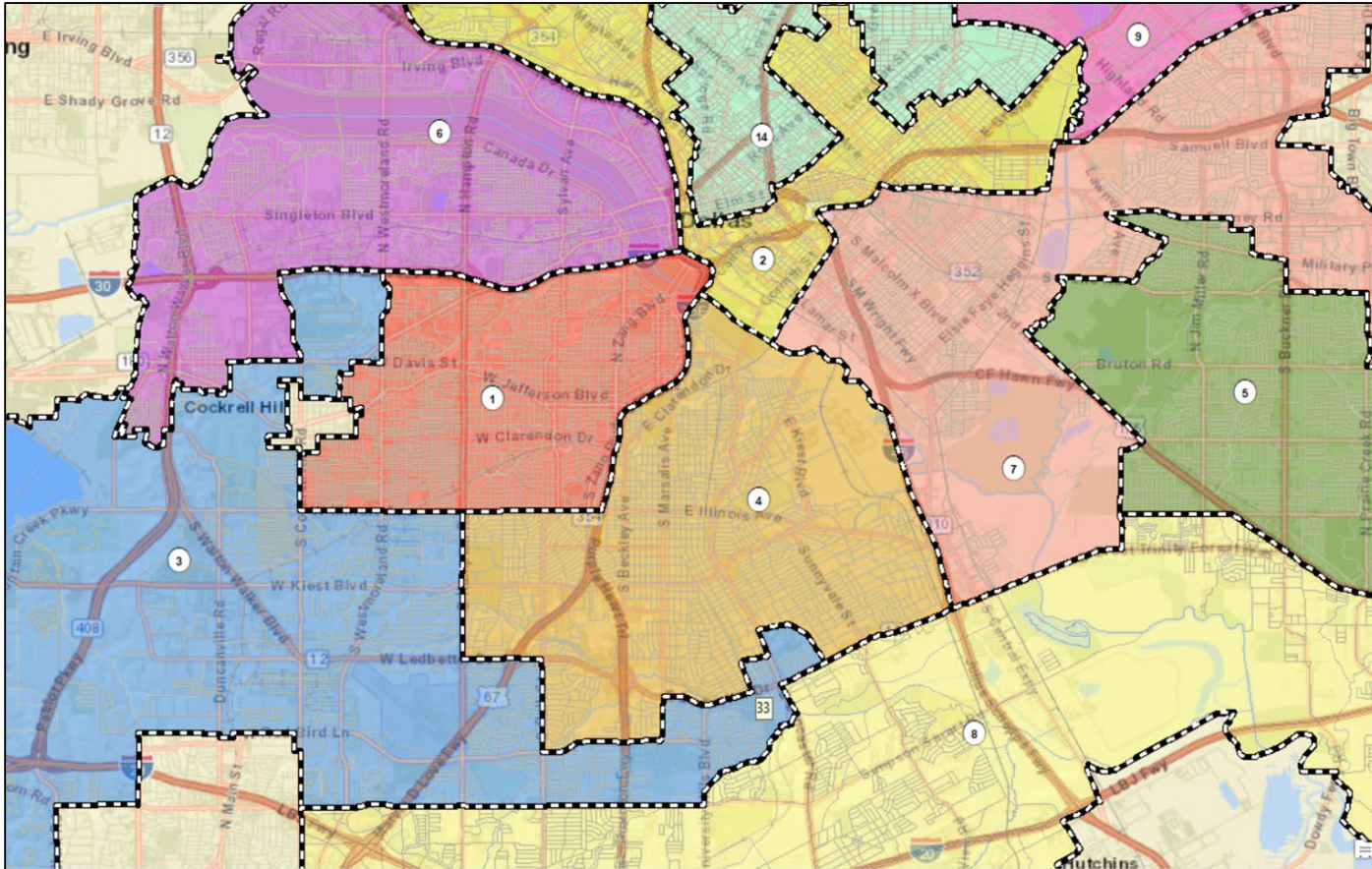


(NH White – Yellow, Hisp – Red; NH Black – Blue)



2020 Census Results (cont.)

District 1

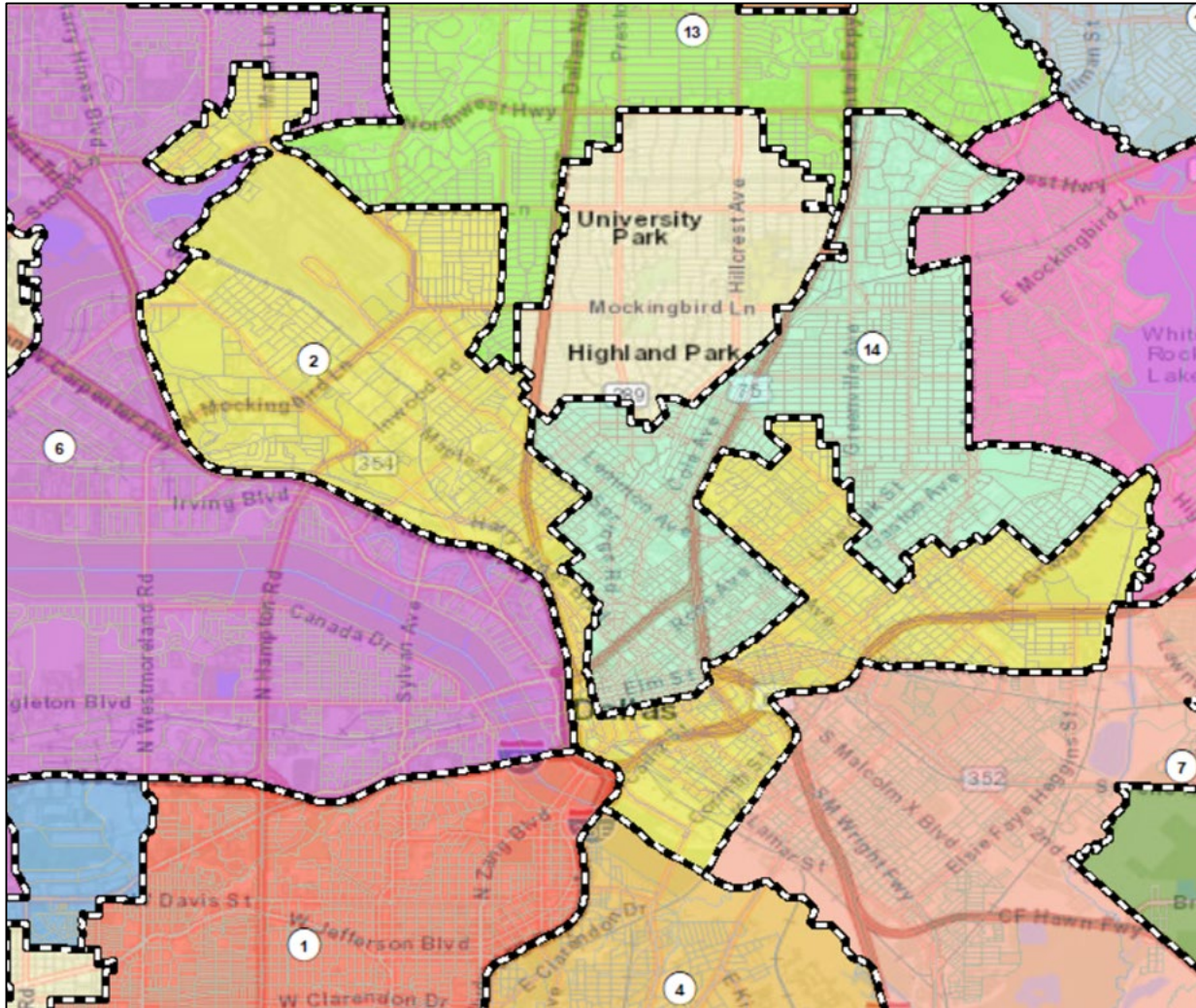


District Summary						
	Total Pop 2010	Total Pop 2020	Ideal Population	Voting Age	Deviation	% Deviation
District 1	83,587	77,916	93,170	59,156	-15,254	-16.37%

DISTRICT 1	2020			
	Total Pop	% Total	Voting Age	% Voting
HISPANIC	56,981	73.13%	41,197	69.64%
NH WHITE	13,400	17.20%	11,877	20.08%
NH BLACK	5,369	6.89%	4,327	7.31%
NH NATIVE	249	0.32%	220	0.37%
ASIAN	587	0.75%	519	0.88%
HAWAIIAN PI	20	0.03%	20	0.03%
OTHER	188	0.24%	126	0.21%
MIXED 2+	1,122	1.44%	870	1.47%
Totals	77,916	100.00%	59,156	100.00%
Voting Age %			75.92%	

2020 Census Results (cont.)

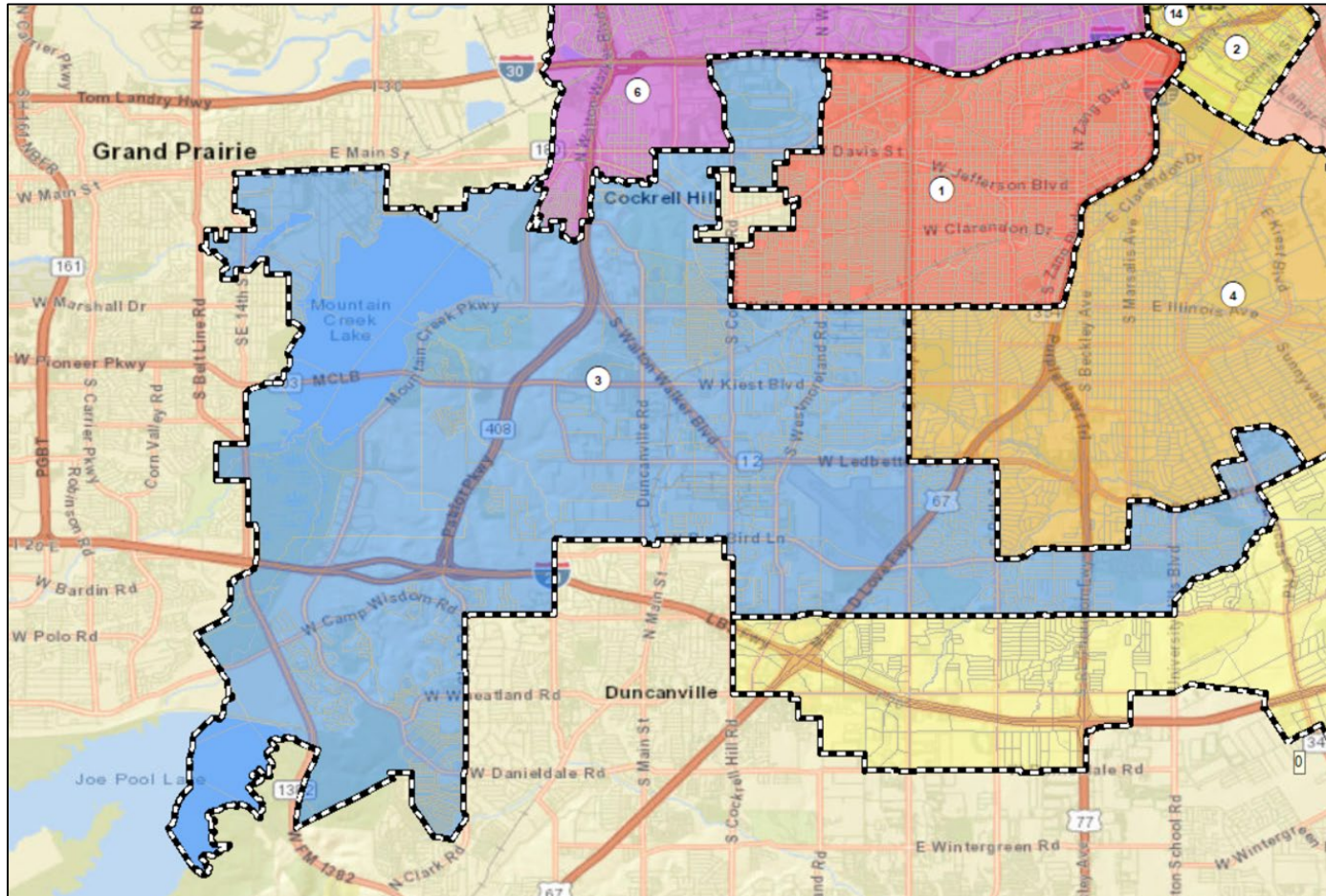
District 2



District Summary						
	Total Pop 2010	Total Pop 2020	Ideal Population	Voting Age	Deviation	% Deviation
District 2	87,114	95,419	93,170	80,912	2,249	2.41%

DISTRICT 2	2020			
	Total Pop	% Total	Voting Age	% Voting
HISPANIC	42,969	45.03%	32,937	40.71%
NH WHITE	29,704	31.13%	28,419	35.12%
NH BLACK	14,290	14.98%	11,990	14.82%
NH NATIVE	262	0.27%	226	0.28%
ASIAN	5,056	5.30%	4,669	5.77%
HAWAIIAN PI	39	0.04%	31	0.04%
OTHER	381	0.40%	321	0.40%
MIXED 2+	2,718	2.85%	2,319	2.87%
Totals	95,419	100.00%	80,912	100.00%
Voting Age %			84.80%	

2020 Census Results (cont.) District 3

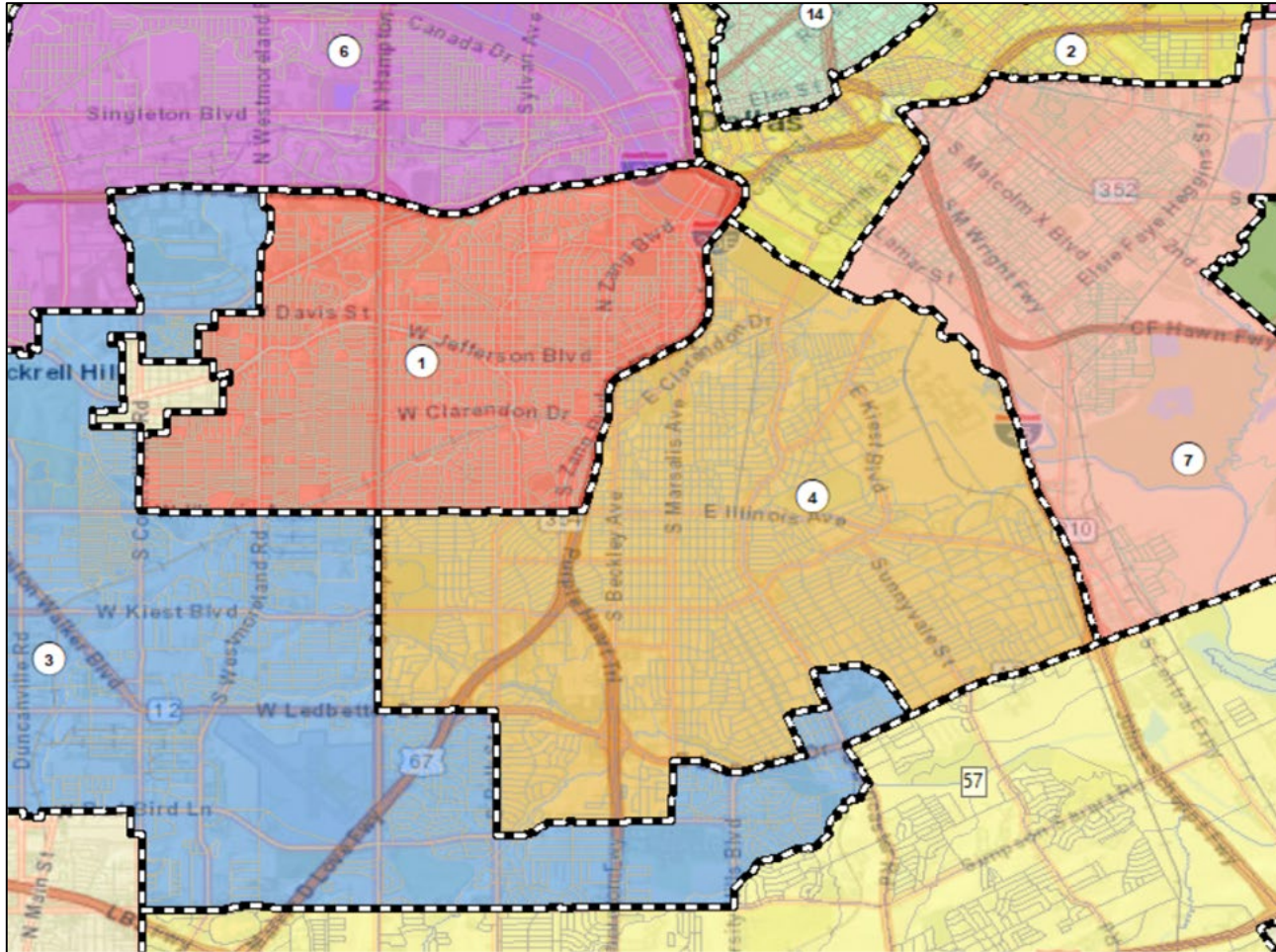


District Summary						
	Total Pop 2010	Total Pop 2020	Ideal Pop	Voting Age	Deviation	% Deviation
District 3	89,845	96,451	93,170	70,641	3,281	3.52%

	2020			
	Total Pop	% Total	Voting Age	% Voting
DISTRICT 3				
HISPANIC	47,909	49.67%	32,383	45.84%
NH WHITE	8,135	8.43%	7,213	10.21%
NH BLACK	36,319	37.66%	27,923	39.53%
NH NATIVE	180	0.19%	145	0.21%
ASIAN	1,787	1.85%	1,491	2.11%
HAWAIIAN PI	46	0.05%	35	0.05%
OTHER	316	0.33%	233	0.33%
MIXED 2+	1,759	1.82%	1,218	1.72%
Totals	96,451	100.00%	70,641	100.00%
Voting Age %			73.24%	

2020 Census Results (cont.)

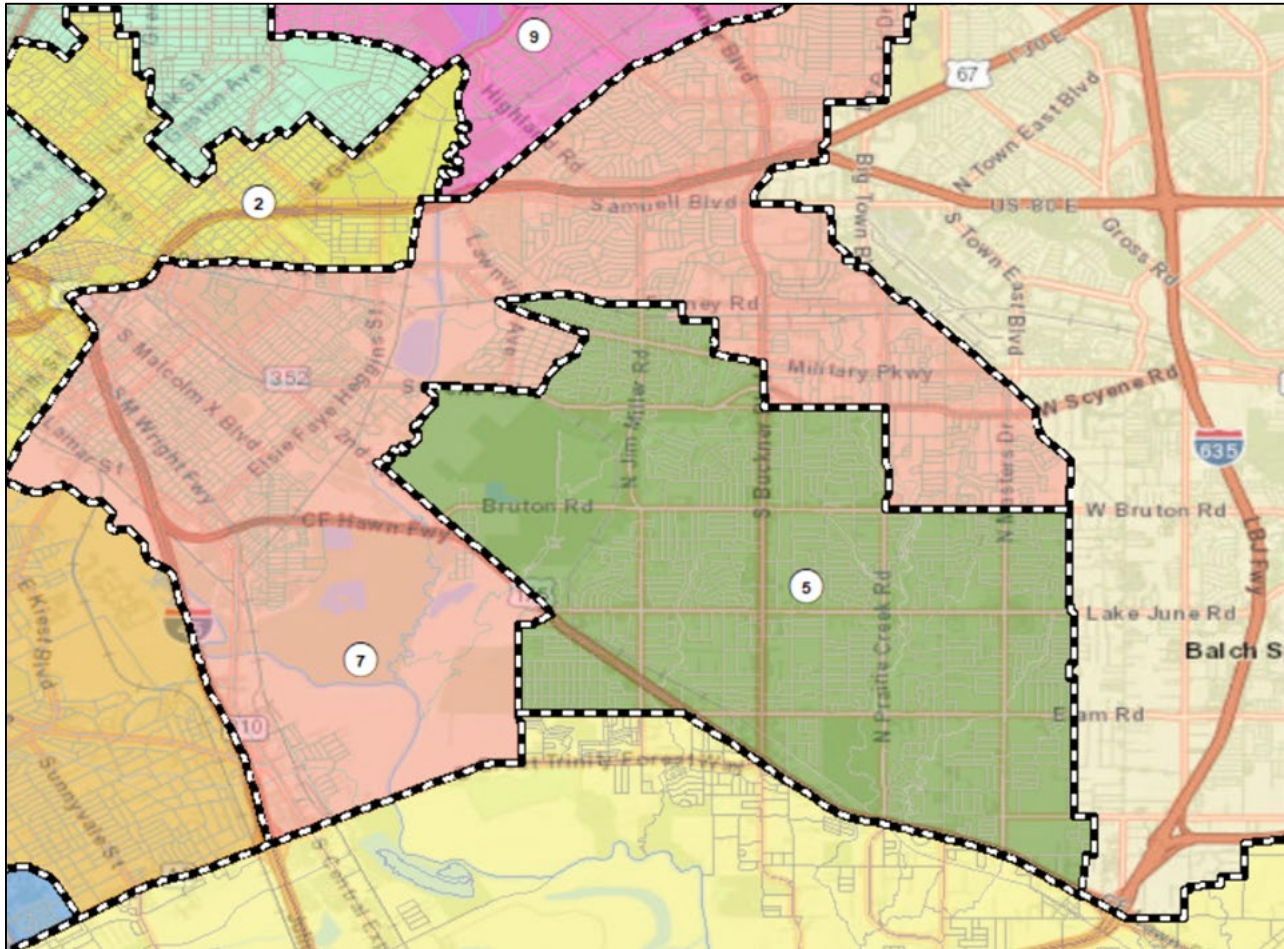
District 4



District Summary						
	Total Pop 2010	Total Pop 2020	Ideal Pop	Voting Age	Deviation	% Deviation
District 4	83,962	89,903	93,170	64,625	-3,267	-3.51%

	2020			
	Total Pop	% Total	Voting Age	% Voting
DISTRICT 4				
HISPANIC	45,849	51.00%	29,875	46.23%
NH WHITE	3,350	3.73%	2,908	4.50%
NH BLACK	38,353	42.66%	30,156	46.66%
NH NATIVE	143	0.16%	98	0.15%
ASIAN	452	0.50%	377	0.58%
HAWAIIAN PI	16	0.02%	11	0.02%
OTHER	417	0.46%	274	0.42%
MIXED 2+	1,323	1.47%	926	1.43%
Totals	89,903	100.00%	64,625	100.00%
Voting Age %			71.88%	

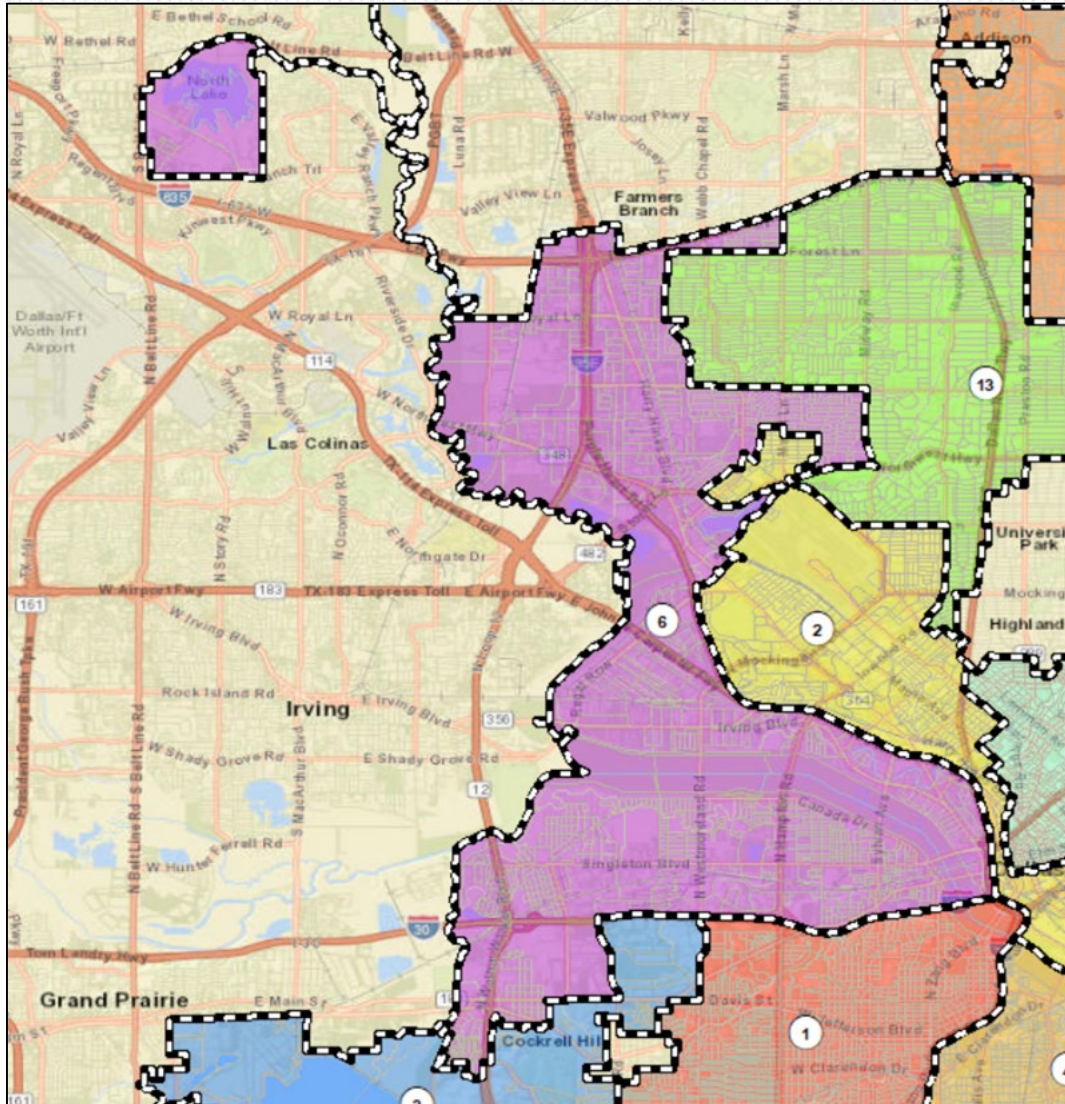
2020 Census Results (cont.) District 5



District Summary						
	Total Pop 2010	Total Pop 2020	Ideal Pop	Voting Age	Deviation	% Deviation
District 5	81,619	81,942	93,170	57,170	-11,228	-12.05%

	2020			
	Total Pop	% Total	Voting Age	% Voting
DISTRICT 5				
HISPANIC	64,771	79.04%	43,290	75.72%
NH WHITE	4,386	5.35%	3,899	6.82%
NH BLACK	11,575	14.13%	9,120	15.95%
NH NATIVE	144	0.18%	119	0.21%
ASIAN	159	0.19%	127	0.22%
HAWAIIAN PI	17	0.02%	16	0.03%
OTHER	205	0.25%	137	0.24%
MIXED 2+	685	0.84%	462	0.81%
Totals	81,942	100.00%	57,170	100.00%
Voting Age %			69.77%	

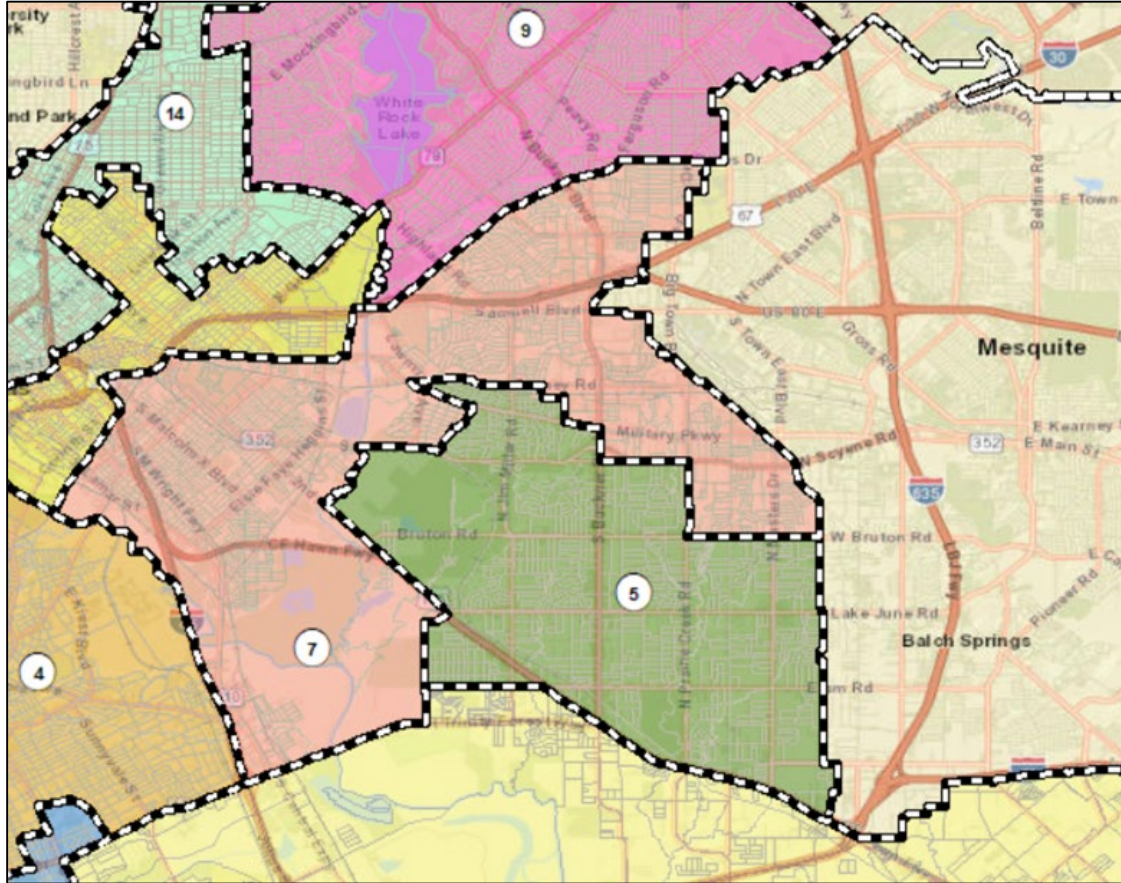
2020 Census Results (cont.) District 6



District Summary						
	Total Pop 2010	Total Pop 2020	Ideal Pop	Voting Age	Deviation	% Deviation
District 6	84,549	87,191	93,170	64,204	-5,979	-6.42%

	2020			
	Total Pop	% Total	Voting Age	% Voting
DISTRICT 6				
HISPANIC	59,136	67.82%	40,788	63.53%
NH WHITE	11,609	13.31%	10,453	16.28%
NH BLACK	12,798	14.68%	10,077	15.70%
NH NATIVE	151	0.17%	133	0.21%
ASIAN	2,090	2.40%	1,733	2.70%
HAWAIIAN PI	20	0.02%	16	0.02%
OTHER	296	0.34%	198	0.31%
MIXED 2+	1,091	1.25%	806	1.26%
Totals	87,191	100.00%	64,204	100.00%
Voting Age %			73.64%	

2020 Census Results (cont.) District 7

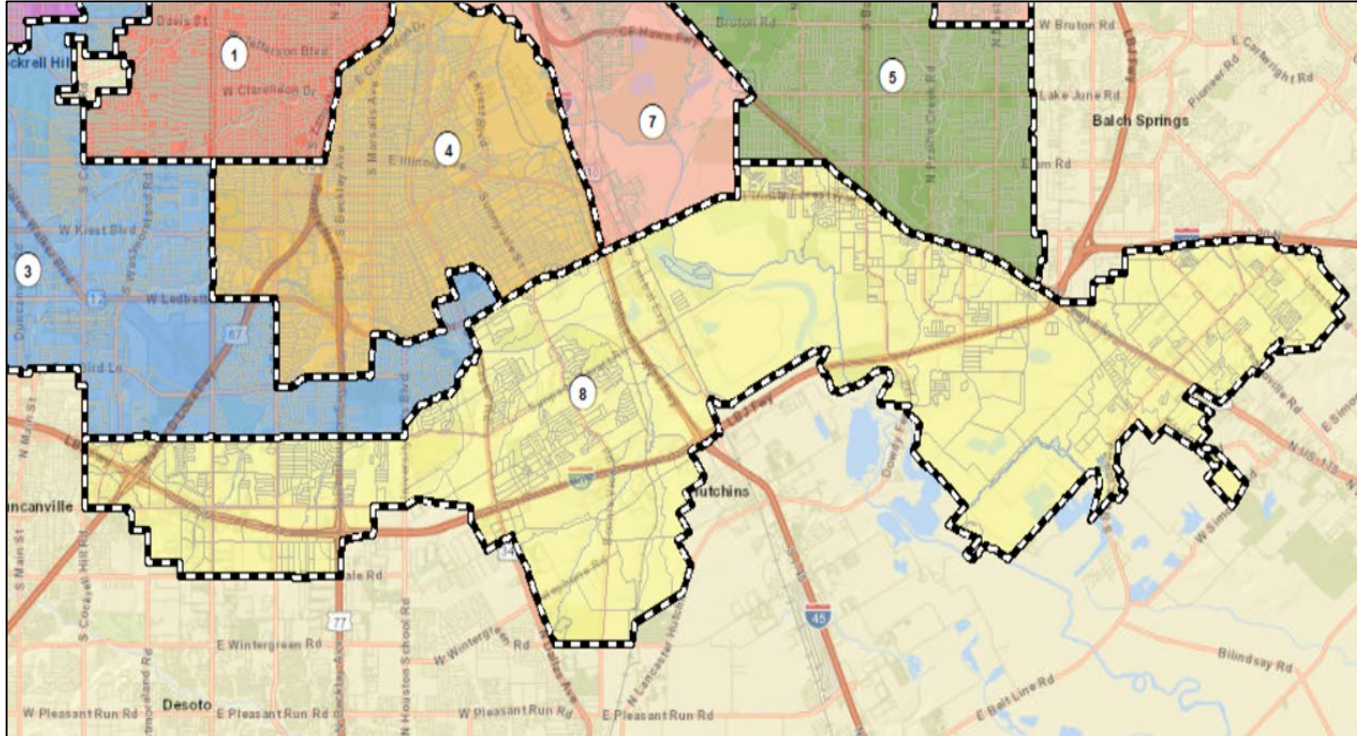


District Summary						
	Total Pop 2010	Total Pop 2020	Ideal Pop	Voting Age	Deviation	% Deviation
District 7	81,841	96,173	93,170	69,639	3,003	3.22%

	2020			
	Total Pop	% Total	Voting Age	% Voting
DISTRICT 7				
HISPANIC	45,154	46.95%	29,991	43.07%
NH WHITE	8,831	9.18%	7,753	11.13%
NH BLACK	39,099	40.65%	29,548	42.43%
NH NATIVE	242	0.25%	177	0.25%
ASIAN	872	0.91%	748	1.07%
HAWAIIAN PI	18	0.02%	12	0.02%
OTHER	333	0.35%	227	0.33%
MIXED 2+	1,624	1.69%	1,183	1.70%
Totals	96,173	100.00%	69,639	100.00%
Voting Age %			72.41%	

2020 Census Results (cont.)

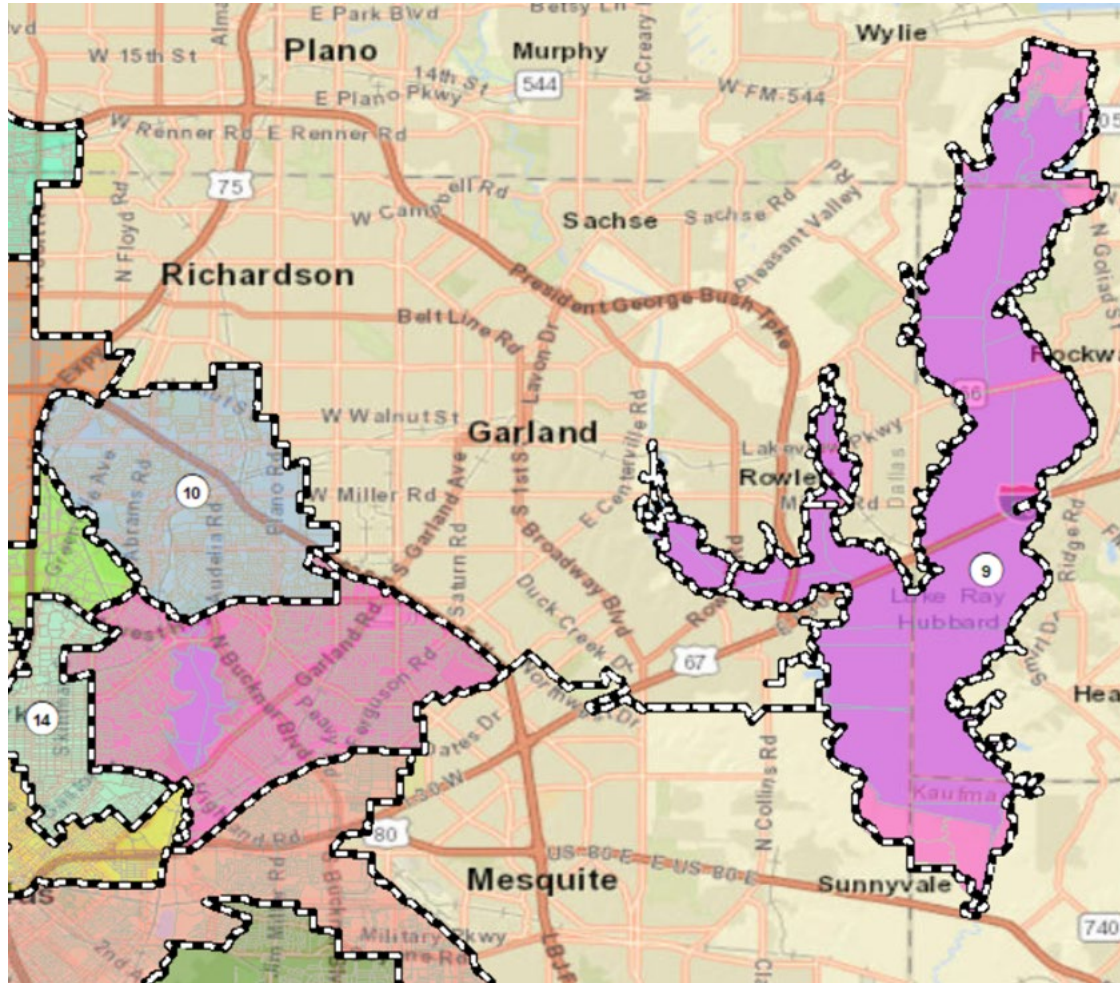
District 8



District Summary						
	Total Pop 2010	Total Pop 2020	Ideal Pop	Voting Age	Deviation	% Deviation
District 8	84,682	100,487	93,170	68,418	7,317	7.85%

DISTRICT 8	2020			
	Total Pop	% Total	Voting Age	% Voting
HISPANIC	44,280	44.07%	27,358	39.99%
NH WHITE	6,200	6.17%	5,068	7.41%
NH BLACK	47,626	47.40%	34,344	50.20%
NH NATIVE	182	0.18%	133	0.19%
ASIAN	344	0.34%	254	0.37%
HAWAIIAN PI	26	0.03%	21	0.03%
OTHER	271	0.27%	172	0.25%
MIXED 2+	1,558	1.55%	1,068	1.56%
Totals	100,487	100.00%	68,418	100.00%
Voting Age %			68.09%	

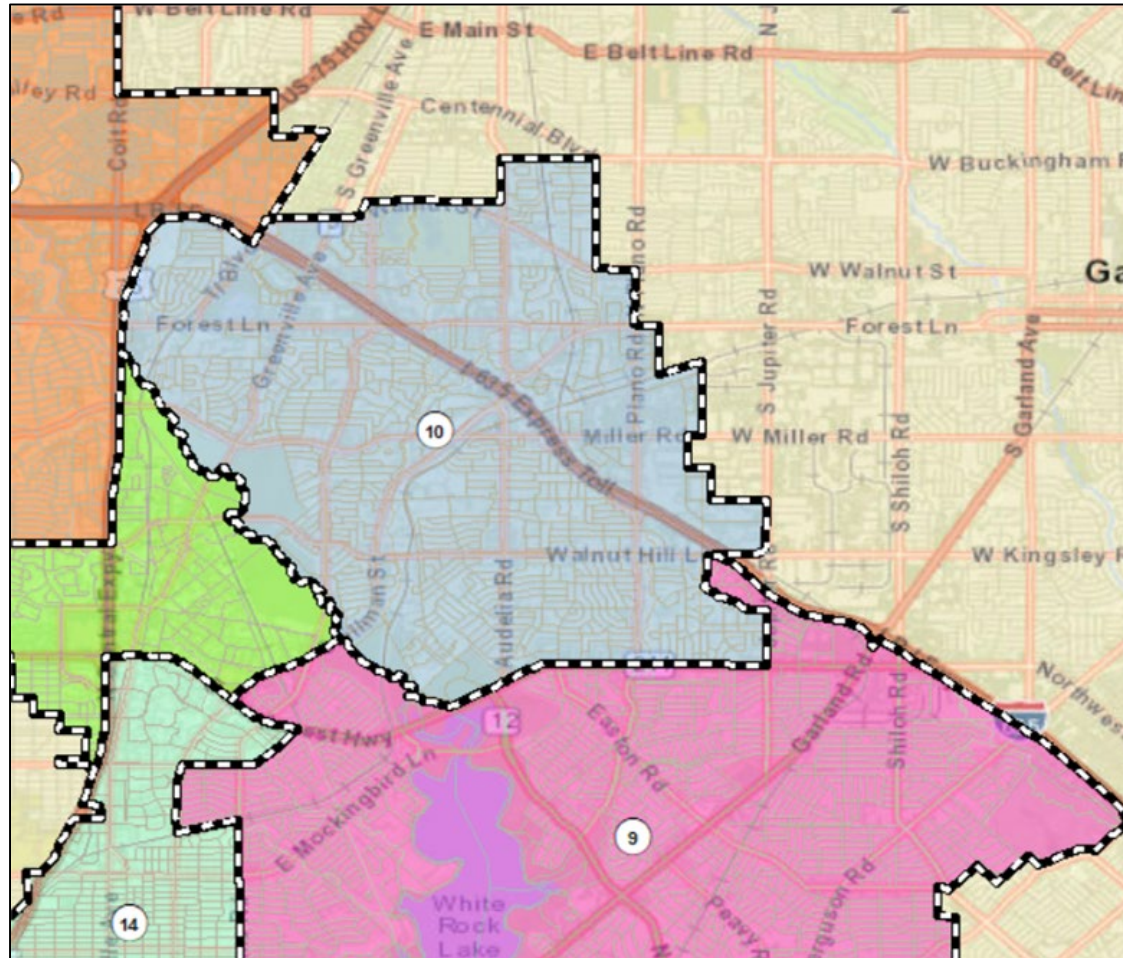
2020 Census Results (cont.) District 9



District Summary						
	Tot Pop 2010	Total Pop 2020	Ideal Pop	Voting Age	Deviation	% Deviation
District 9	86,350	90,023	93,170	68,776	-3,147	-3.38%

	2020			
	Total Pop	% Total	Voting Age	% Voting
DISTRICT 9				
HISPANIC	35,362	39.28%	24,414	35.50%
NH WHITE	39,527	43.91%	32,871	47.79%
NH BLACK	9,625	10.69%	7,474	10.87%
NH NATIVE	265	0.29%	207	0.30%
ASIAN	2,152	2.39%	1,791	2.60%
HAWAIIAN PI	44	0.05%	28	0.04%
OTHER	359	0.40%	231	0.34%
MIXED 2+	2,689	2.99%	1,760	2.56%
Totals	90,023	100.00%	68,776	100.00%
Voting Age %			76.40%	

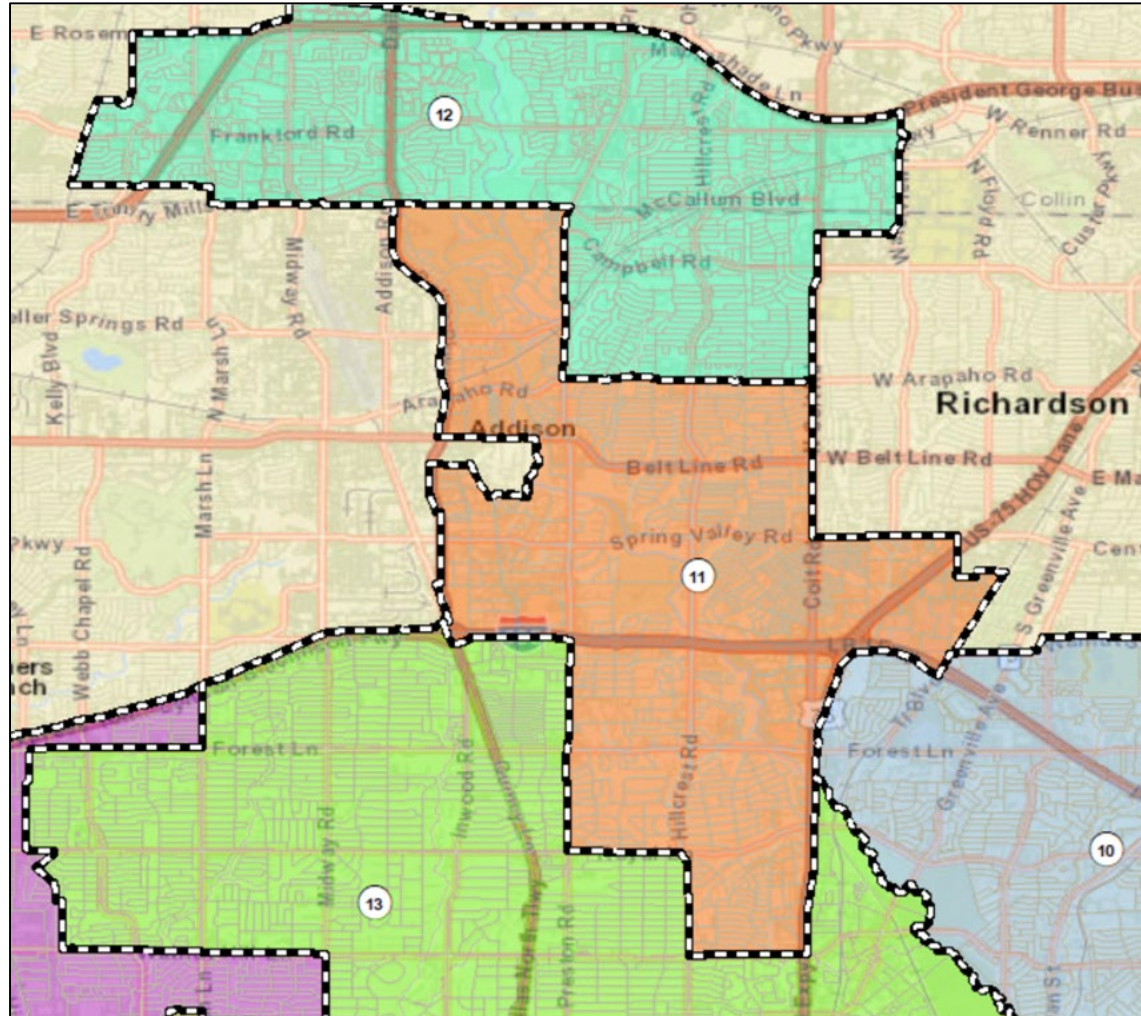
2020 Census Results (cont.) District 10



District Summary						
	Total Pop 2010	Total Pop 2020	Ideal Pop	Voting Age	Deviation	% Deviation
District 10	87,504	98,464	93,170	73,315	5,294	5.68%

	2020			
	Total Pop	% Total	Voting Age	% Voting
DISTRICT 10				
HISPANIC	20,480	20.80%	13,911	18.97%
NH WHITE	35,728	36.29%	28,342	38.66%
NH BLACK	32,230	32.73%	23,893	32.59%
NH NATIVE	186	0.19%	156	0.21%
ASIAN	6,183	6.28%	4,548	6.20%
HAWAIIAN PI	36	0.04%	31	0.04%
OTHER	385	0.39%	285	0.39%
MIXED 2+	3,236	3.29%	2,149	2.93%
Totals	98,464	100.00%	73,315	100.00%
Voting Age %			74.46%	

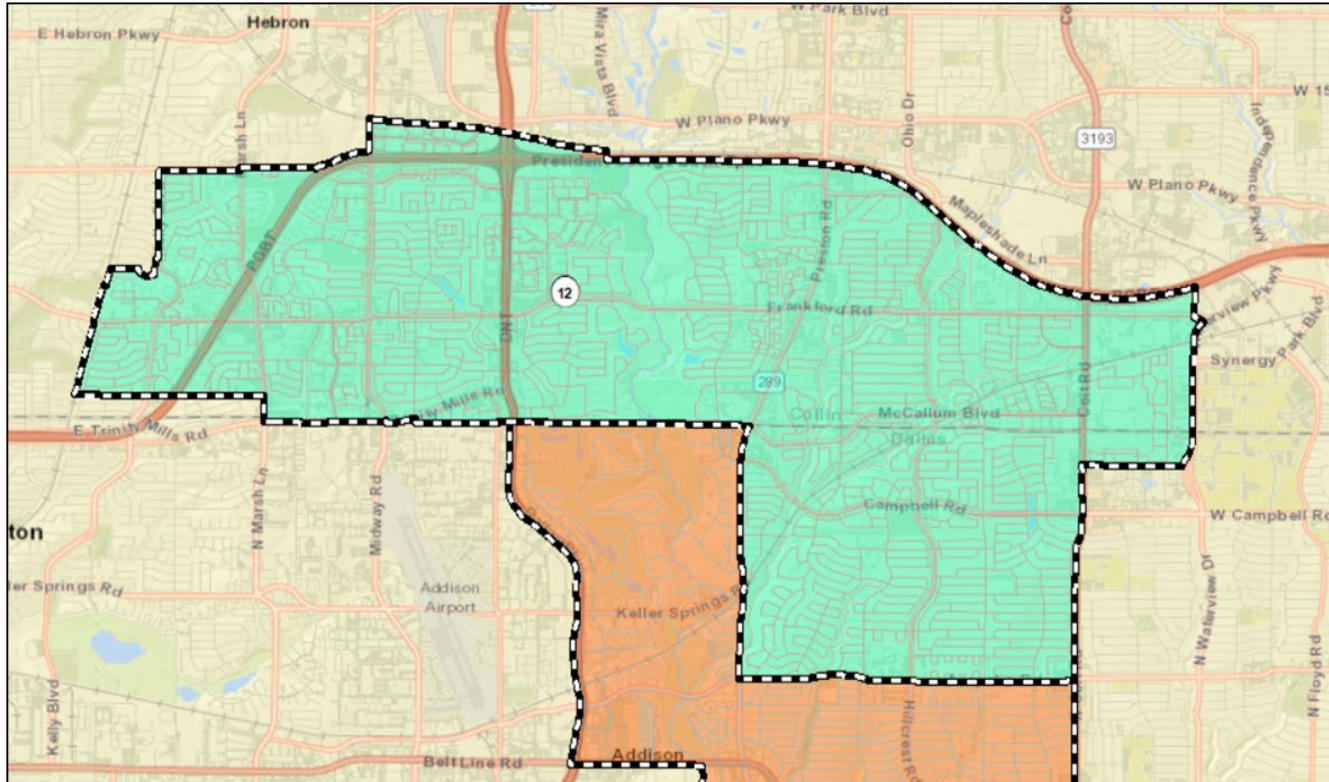
2020 Census Results (cont.) District 11



District Summary						
	Total Pop 2010	Total Pop	Ideal Pop	Voting Age	Deviation	% Deviation
District 11	85,272	93,975	93,170	75,753	805	0.86%

	2020			
	Total Pop	% Total	Voting Age	% Voting
DISTRICT 11				
HISPANIC	30,883	32.86%	21,804	28.78%
NH WHITE	39,762	42.31%	34,932	46.11%
NH BLACK	14,605	15.54%	11,817	15.60%
NH NATIVE	194	0.21%	144	0.19%
ASIAN	5,062	5.39%	4,472	5.90%
HAWAIIAN PI	48	0.05%	32	0.04%
OTHER	476	0.51%	352	0.46%
MIXED 2+	2,945	3.13%	2,200	2.90%
Totals	93,975	100.00%	75,753	100.00%
Voting Age %			80.61%	

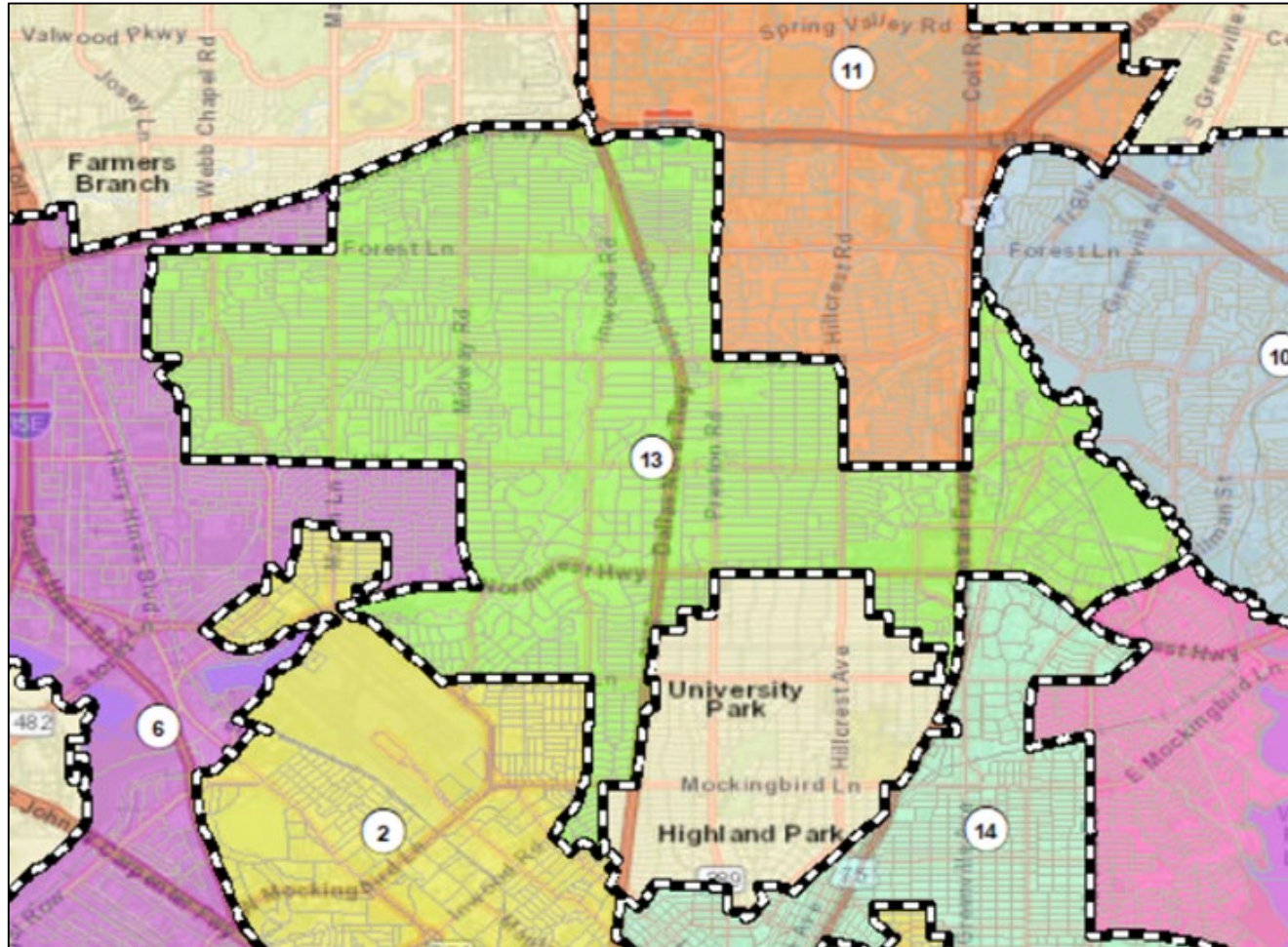
2020 Census Results (cont.) District 12



District Summary						
	Total Pop 2010	Total Pop 2020	Ideal Pop	Voting Age	Deviation	% Deviation
District 12	88,629	98,347	93,170	79,342	5,177	5.56%

	2020			
	Total Pop	% Total	Voting Age	% Voting
DISTRICT 12				
HISPANIC	19,305	19.63%	14,187	17.88%
NH WHITE	44,267	45.01%	37,446	47.20%
NH BLACK	19,936	20.27%	15,526	19.57%
NH NATIVE	231	0.23%	173	0.22%
ASIAN	9,918	10.08%	8,640	10.89%
HAWAIIAN PI	45	0.05%	31	0.04%
OTHER	592	0.60%	436	0.55%
MIXED 2+	4,053	4.12%	2,903	3.66%
Totals	98,347	100.00%	79,342	100.00%
Voting Age %			80.68%	

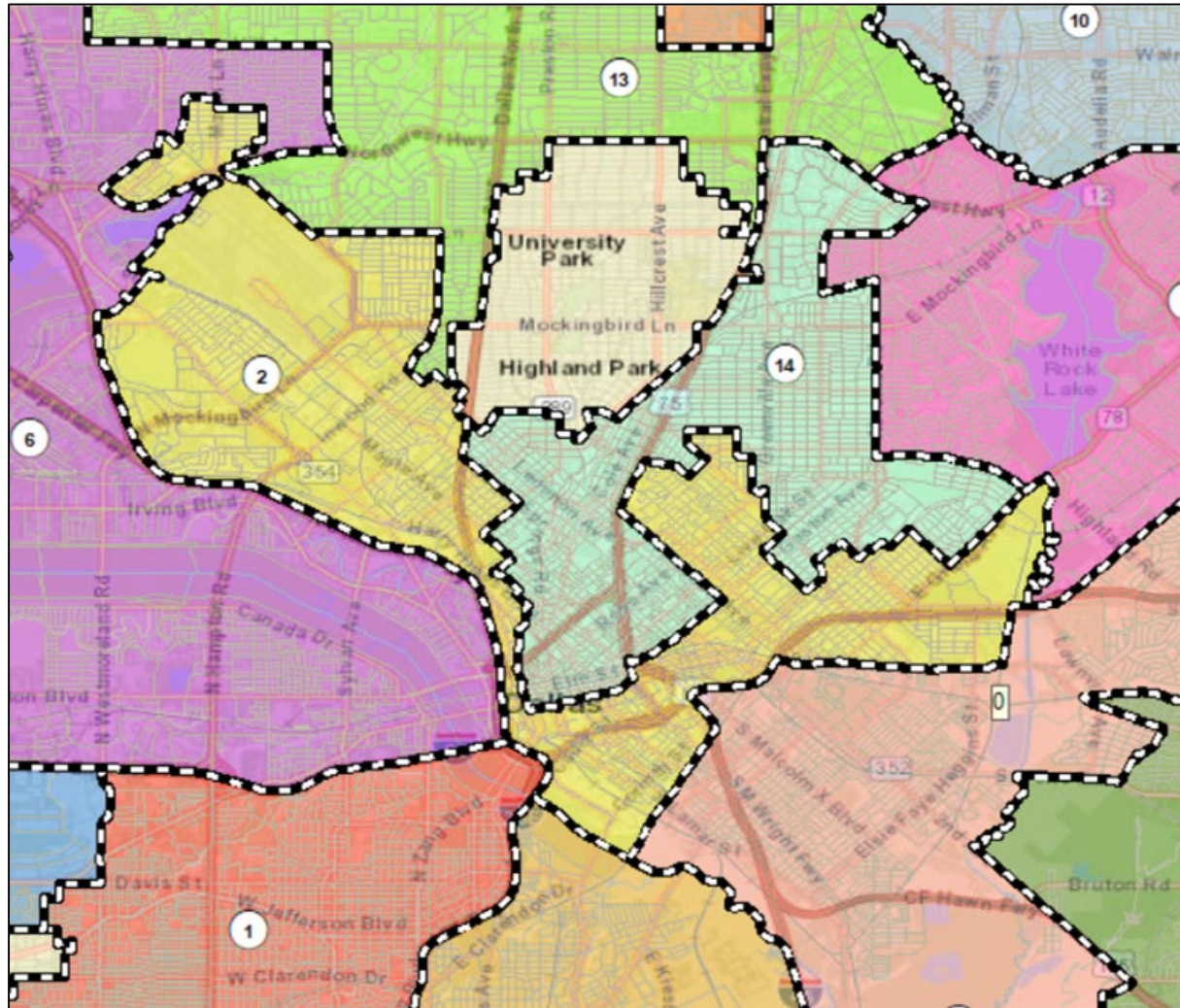
District 13



District Summary						
	Total Pop 2010	Total Pop 2020	Ideal Pop	Voting Age	Deviation	% Deviation
District 13	89,192	91,161	93,170	71,253	-2,009	-2.16%

	2020			
	Total Pop	% Total	Voting Age	% Voting
DISTRICT 13				
HISPANIC	22,776	24.98%	15,928	22.35%
NH WHITE	50,375	55.26%	41,768	58.62%
NH BLACK	8,338	9.15%	6,722	9.43%
NH NATIVE	170	0.19%	139	0.20%
ASIAN	6,461	7.09%	4,649	6.52%
HAWAIIAN PI	34	0.04%	28	0.04%
OTHER	256	0.28%	176	0.25%
MIXED 2+	2,751	3.02%	1,843	2.59%
Totals	91,161	100.00%	71,253	100.00%
Voting Age %			78.16%	

District 14



District Summary						
	Total Pop 2010	Total Pop 2020	Ideal Pop	Voting Age	Deviation	% Deviation
District 14	83,670	106,927	93,170	96,501	13,757	14.77%

	2020			
DISTRICT 14	Total Pop	% Total	Voting Age	% Voting
HISPANIC	15,319	14.33%	12,899	13.37%
NH WHITE	71,119	66.51%	65,818	68.20%
NH BLACK	8,601	8.04%	7,340	7.61%
NH NATIVE	334	0.31%	283	0.29%
ASIAN	6,697	6.26%	6,173	6.40%
HAWAIIAN PI	49	0.05%	42	0.04%
OTHER	520	0.49%	426	0.44%
MIXED 2+	4,288	4.01%	3,520	3.65%
Totals	106,927	100.00%	96,501	100.00%
Voting Age %			90.25%	

Questions



2020 City of Dallas Census Results

City Council Meeting
October 20, 2021

Sam Mathur
Priti Mathur

ARCBridge Consultant, Inc.
2021 Redistricting Consultant



City of Dallas