



## City of Dallas 2021-22 Redistricting

### Submitted Map Analysis

**Plan Summary** – Plan ID: COD-005 (Submitter: Desi Tanner)

**Date Submitted:** - 1/19/22

**Current Status:** Meets the City of Dallas Redistricting Criteria

#### REVIEW CRITERIA FOR PLAN ACCEPTANCE

**1. Maximum Deviation Less than 10%:** Population Difference between most populated and least populated district divided by ideal population is less than 10%

**Plan meets Criteria**

**Plan does not meet Criteria**

Plan Max Deviation – 6.07%

**2. Contiguity:** All districts should be geographically contiguous.

**Plan meets Criteria**

**Plan does not meet Criteria**

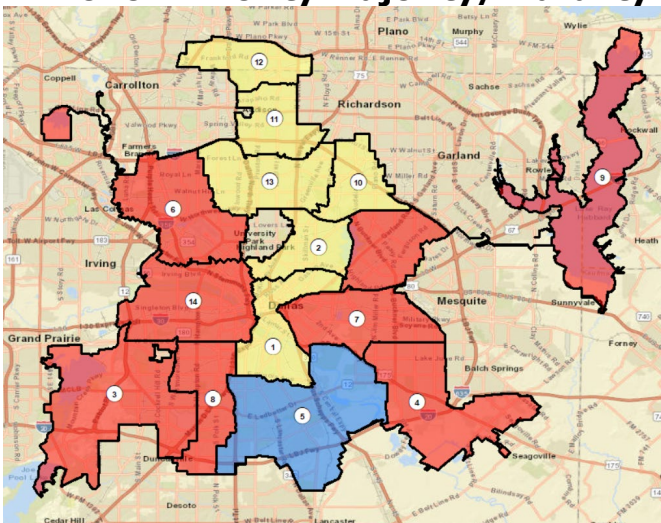
**3. Unassigned Units – None**

**Plan meets Criteria**

**Plan does not meet Criteria**

**4. Other Map Characteristics for further evaluation:**

**1. No. of Minority Majority/Plurality Districts: 8**



NH-Black – 1 (5)

Hispanic – 7  
(3,4,6,7,8,9,14)

(NH White – Yellow, Hispanic – Red; NH Black – Blue)

### Total Population by Race and Ethnicity

	Total Population	Deviation		Hispanic		NH-White		NH-Black		NH-Asian		NH-Other	
		#	%	#	%	#	%	#	%	#	%	#	%
1	92,228	-942.00	-1.01%	31,007	33.62%	32,926	35.70%	21,645	23.47%	3,208	3.48%	3,442	3.73%
2	93,504	334.00	0.36%	13,882	14.85%	64,952	69.46%	4,962	5.31%	5,286	5.65%	4,422	4.73%
3	94,577	1,407.00	1.51%	50,976	<b>53.90%</b>	7,993	8.45%	31,629	33.44%	1,848	1.95%	2,131	2.25%
4	95,829	2,659.00	2.85%	71,982	<b>75.12%</b>	7,562	7.89%	14,601	15.24%	230	0.24%	1,454	1.52%
5	95,523	2,353.00	2.53%	39,614	41.47%	2,001	2.09%	51,789	<b>54.22%</b>	295	0.31%	1,824	1.91%
6	93,391	221.00	0.24%	55,614	<b>59.55%</b>	25,384	27.18%	6,556	7.02%	3,510	3.76%	2,327	2.49%
7	92,929	-241.00	-0.26%	51,748	<b>55.69%</b>	5,845	6.29%	33,060	35.58%	503	0.54%	1,773	1.91%
8	94,939	1,769.00	1.90%	57,188	<b>60.24%</b>	8,557	9.01%	26,498	27.91%	552	0.58%	2,144	2.26%
9	90,611	-2,559.00	-2.75%	43,422	<b>47.92%</b>	28,915	31.91%	13,406	14.80%	1,946	2.15%	2,922	3.22%
10	90,171	-2,999.00	-3.22%	21,741	24.11%	30,337	33.64%	29,157	32.34%	5,523	6.13%	3,413	3.79%
11	92,142	-1,028.00	-1.10%	31,847	34.56%	37,283	40.46%	14,754	16.01%	4,791	5.20%	3,467	3.76%
12	91,761	-1,409.00	-1.51%	18,347	19.99%	39,355	42.89%	19,801	21.58%	9,641	10.51%	4,617	5.03%
13	92,313	-857.00	-0.92%	18,799	20.36%	49,634	53.77%	13,378	14.49%	6,987	7.57%	3,515	3.81%
14	94,461	1,291.00	1.39%	45,007	<b>47.65%</b>	25,649	27.15%	17,528	18.56%	3,500	3.71%	2,777	2.94%
	1,304,379		6.07%	551,174	42.26%	366,393	28.09%	298,764	22.90%	47,820	3.67%	40,228	3.08%

### Total Voting Age Population by Race and Ethnicity

	Total Voting Age Population	Hispanic		NH-White		NH-Black		NH-Asian		NH-Other	
		#	%	#	%	#	%	#	%	#	%
1	76,827	22,728	29.58%	30,991	40.34%	17,284	22.50%	2,977	3.87%	2,847	3.71%
2	80,847	11,245	13.91%	57,316	70.89%	4,165	5.15%	4,755	5.88%	3,366	4.16%
3	68,200	35,066	<b>51.42%</b>	7,081	10.38%	23,038	33.78%	1,544	2.26%	1,471	2.16%
4	64,887	46,430	<b>71.56%</b>	6,337	9.77%	10,966	16.90%	169	0.26%	985	1.52%
5	67,648	24,952	36.89%	1,661	2.46%	39,577	<b>58.50%</b>	201	0.30%	1,257	1.86%
6	71,150	39,193	<b>55.09%</b>	21,763	30.59%	5,548	7.80%	2,968	4.17%	1,678	2.36%
7	67,002	34,698	<b>51.79%</b>	5,223	7.80%	25,358	37.85%	446	0.67%	1,277	1.91%
8	70,315	40,222	<b>57.20%</b>	7,546	10.73%	20,480	29.13%	487	0.69%	1,580	2.25%
9	68,532	29,785	<b>43.46%</b>	25,012	36.50%	10,018	14.62%	1,647	2.40%	2,070	3.02%
10	66,685	14,739	22.10%	24,105	36.15%	21,482	32.21%	3,994	5.99%	2,365	3.55%
11	72,560	22,150	30.53%	31,861	43.91%	11,778	16.23%	4,234	5.84%	2,537	3.50%
12	74,929	13,579	18.12%	34,096	45.50%	15,457	20.63%	8,414	11.23%	3,383	4.51%
13	73,099	13,290	18.18%	41,514	56.79%	10,771	14.73%	5,143	7.04%	2,381	3.26%
14	77,024	32,885	<b>42.69%</b>	24,261	31.50%	14,335	18.61%	3,212	4.17%	2,331	3.03%
	999,705	380,962	38.11%	318,767	31.89%	230,257	23.03%	40,191	4.02%	29,528	2.95%

The Majority/Plurality District percentages are in bold

**2. No. of Neighborhoods splits - 52 out of 443 Neighborhood Associations**

**3. Compactness analysis for each district:**

District	Area:	Perimeter:	Reock	Polsby-Popper	Convex Hull Ratio:	Schwartzberg
District 1	18.99	29.23	0.30	0.28	0.63	0.53
District 2	13.70	22.86	0.34	0.33	0.69	0.57
District 3	46.01	58.06	0.32	0.17	0.66	0.41
District 4	32.83	40.16	0.29	0.26	0.68	0.51
District 5	45.38	39.78	0.37	0.36	0.75	0.60
District 6	32.48	56.11	0.19	0.13	0.53	0.36
District 7	23.06	26.12	0.30	0.42	0.79	0.65
District 8	18.70	26.96	0.31	0.32	0.72	0.57
District 9	57.17	112.19	0.14	0.06	0.35	0.24
District 10	13.14	21.57	0.30	0.36	0.75	0.60
District 11	14.72	22.18	0.40	0.38	0.80	0.61
District 12	13.86	19.54	0.30	0.46	0.82	0.68
District 13	23.30	28.34	0.39	0.36	0.77	0.60
District 14	30.02	31.34	0.45	0.38	0.86	0.62
<b>Average</b>	<b>27.38</b>	<b>38.17</b>	<b>0.31</b>	<b>0.30</b>	<b>0.70</b>	<b>0.54</b>





City of Dallas

# 2021/22 City of Dallas Redistricting Plan Submission - COD-005-Tanner on 1-19-22

## Map Meets the Redistricting Criteria

### General Information

Plan-ID: COD-005-Tanner  
 Submitted By: Desi Tanner  
 Submitted On: 1/19/2022  
 Status: Meets Criteria

### Deviation, Area and Perimeter

Maximum Deviation: 6.07%  
 Average Area: 27.38  
 Average Perimeter: 38.17

### Average Compactness Scores

Average Reock Score: 0.31  
 Average Polsby-Popper Score: 0.30  
 Average Convex Hull Score: 0.70  
 Average Schwartzberg Score: 0.54

### Minority Majority Districts

Number of Minority/Plurality Districts: 8 (1 NH-Black, 7 Hisp)  
 Number of Neighborhood splits: 52

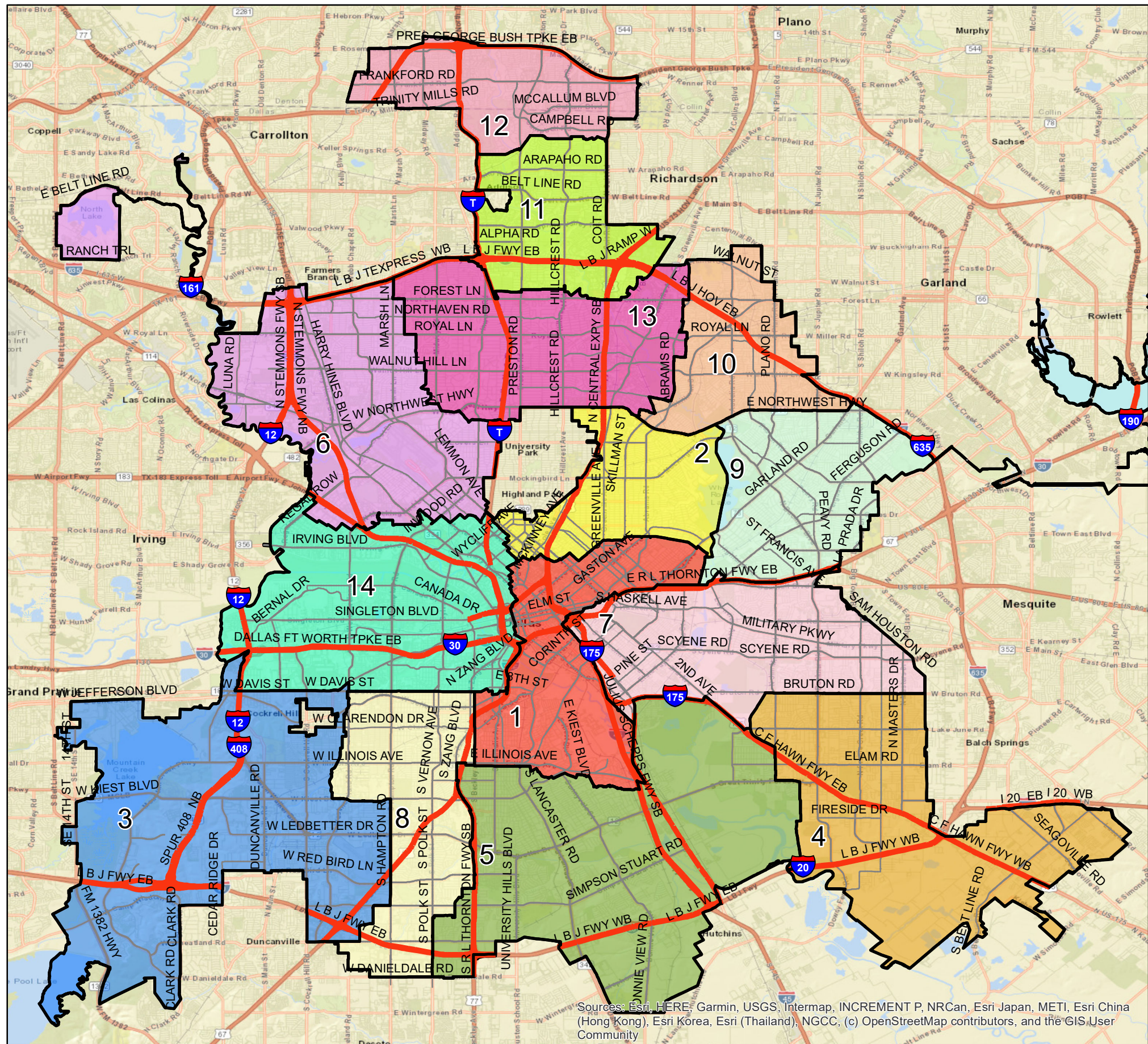
Highways

### Districts

- 1
- 2
- 3
- 4
- 5
- 6
- 7
- 8
- 9
- 10
- 11
- 12
- 13
- 14

Total Population	Deviation		Hispanic		NH-White		NH-Black		NH-Asian		NH-Other		
	#	%	#	%	#	%	#	%	#	%	#	%	
1	92,228	-942.00	-1.01%	31,007	33.62%	32,926	35.70%	21,645	23.47%	3,208	3.48%	3,442	3.73%
2	93,504	334.00	0.36%	13,882	14.85%	64,952	69.46%	4,962	5.31%	5,286	5.65%	4,422	4.73%
3	94,577	1,407.00	1.51%	50,976	53.90%	7,993	8.45%	31,629	33.44%	1,848	1.95%	2,131	2.25%
4	95,829	2,659.00	2.85%	71,982	75.12%	7,562	7.89%	14,601	15.24%	230	0.24%	1,454	1.52%
5	95,523	2,353.00	2.53%	39,614	41.47%	2,001	2.09%	51,789	54.22%	295	0.31%	1,824	1.91%
6	93,391	221.00	0.24%	55,614	59.55%	25,384	27.18%	6,556	7.02%	3,510	3.76%	2,327	2.49%
7	92,929	-241.00	-0.26%	51,748	55.69%	5,845	6.29%	33,060	35.58%	503	0.54%	1,773	1.91%
8	94,939	1,769.00	1.90%	57,188	60.24%	8,557	9.01%	26,498	27.91%	552	0.58%	2,144	2.26%
9	90,611	-2,559.00	-2.75%	43,422	47.92%	28,915	31.91%	13,406	14.80%	1,946	2.15%	2,922	3.22%
10	90,171	-2,999.00	-3.22%	21,741	24.11%	30,337	33.64%	29,157	32.34%	5,523	6.13%	3,413	3.79%
11	92,142	-1,028.00	-1.10%	31,847	34.56%	37,283	40.46%	14,754	16.01%	4,791	5.20%	3,467	3.76%
12	91,761	-1,409.00	-1.51%	18,347	19.99%	39,355	42.89%	19,801	21.58%	9,641	10.51%	4,617	5.03%
13	92,313	-857.00	-0.92%	18,799	20.36%	49,634	53.77%	13,378	14.49%	6,987	7.57%	3,515	3.81%
14	94,461	1,291.00	1.39%	45,007	47.65%	25,649	27.15%	17,528	18.56%	3,500	3.71%	2,777	2.94%
1,304,379		6.07%		551,174	42.26%	366,393	28.09%	298,764	22.90%	47,820	3.67%	40,228	3.08%

Total Voting Age Population	Hispanic		NH-White		NH-Black		NH-Asian		NH-Other		
	#	%	#	%	#	%	#	%	#	%	
1	76,827	22,728	29.58%	30,991	40.34%	17,284	22.50%	2,977	3.87%	2,847	3.71%
2	80,847	11,245	13.91%	57,316	70.89%	4,165	5.15%	4,755	5.88%	3,366	4.16%
3	68,200	35,066	51.42%	7,081	10.38%	23,038	33.78%	1,544	2.26%	1,471	2.16%
4	64,887	46,430	71.56%	6,337	9.77%	10,966	16.90%	169	0.26%	985	1.52%
5	67,648	24,952	36.89%	1,661	2.46%	39,577	58.50%	201	0.30%	1,257	1.86%
6	71,150	39,193	55.09%	21,763	30.59%	5,548	7.80%	2,968	4.17%	1,678	2.36%
7	67,002	34,698	51.79%	5,223	7.80%	25,358	37.85%	446	0.67%	1,277	1.91%
8	70,315	40,222	57.20%	7,546	10.73%	20,480	29.13%	487	0.69%	1,580	2.25%
9	68,532	29,785	43.46%	25,012	36.50%	10,018	14.62%	1,647	2.40%	2,070	3.02%
10	66,685	14,739	22.10%	24,105	36.15%	21,482	32.21%	3,994	5.99%	2,365	3.55%
11	72,560	22,150	30.53%	31,861	43.91%	11,778	16.23%	4,234	5.84%	2,537	3.50%
12	74,929	13,579	18.12%	34,096	45.50%	15,457	20.63%	8,414	11.23%	3,383	4.51%
13	73,099	13,290	18.18%	41,514	56.79%	10,771	14.73%	5,143	7.04%	2,381	3.26%
14	77,024	32,885	42.69%	24,261	31.50%	14,335	18.61%	3,212	4.17%	2,331	3.03%
999,705	380,962	38.11%	318,767	31.89%	230,257	23.03%	40,191	4.02%	29,528	2.95%	



Sources: Esri, HERE, Garmin, USGS, Intermap, INCREMENT P, NRCan, Esri Japan, METI, Esri China (Hong Kong), Esri Korea, Esri (Thailand), NGCC, (c) OpenStreetMap contributors, and the GIS User Community



Demographic Data Source: 2020 - PL94-171 Data from Bureau of Census; Geography: 2020 Census Blocks from the Bureau of Census; Districts: As Drawn by the Plan Submitter

