

RECEIVED

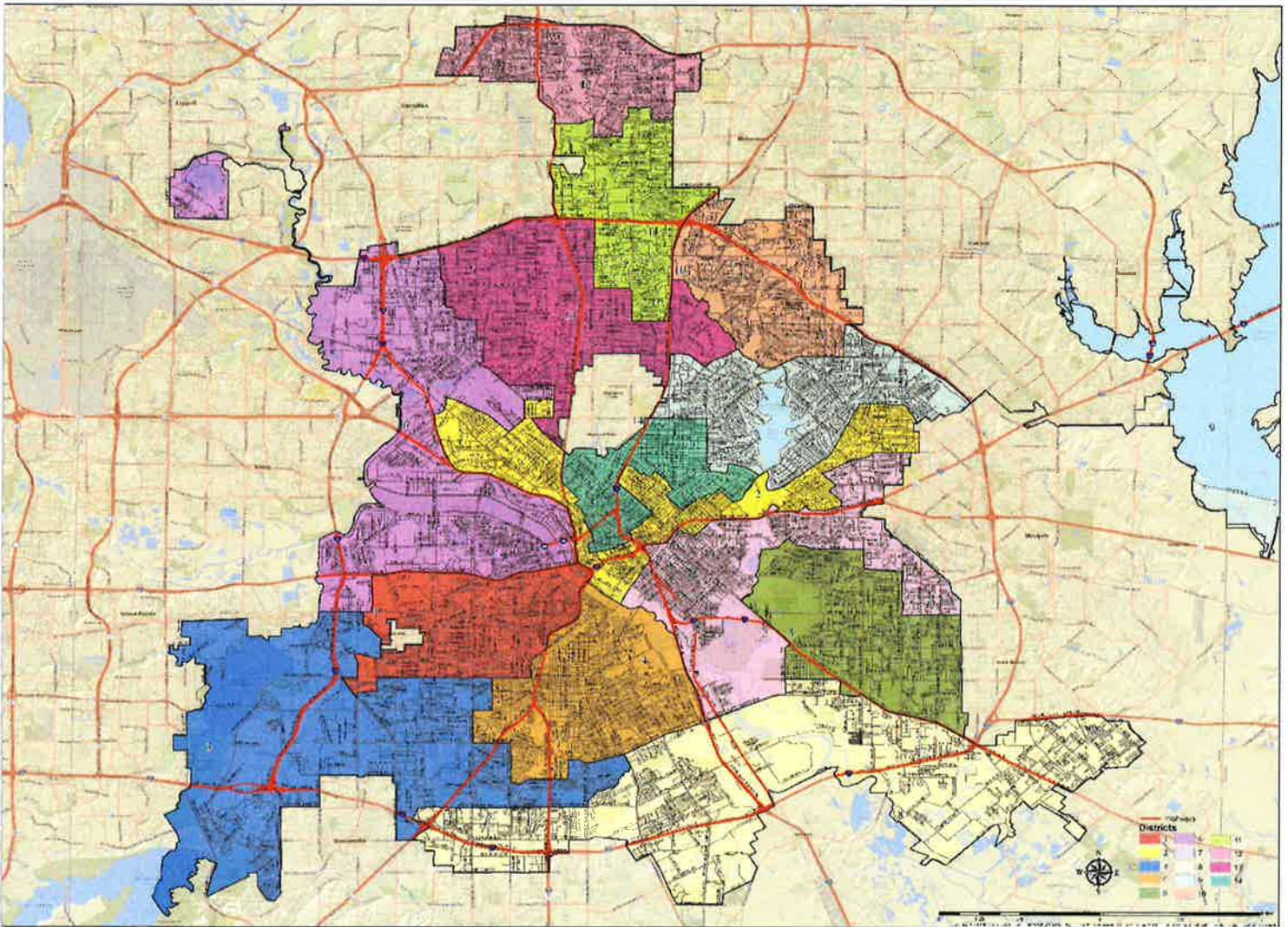
2022 MAY 16 PM 12:49



2021 DALLAS CITY REDISTRICTING

Recommended Districting Plan Report May 16, 2022

Proposed Districting Plan for City Council Consideration

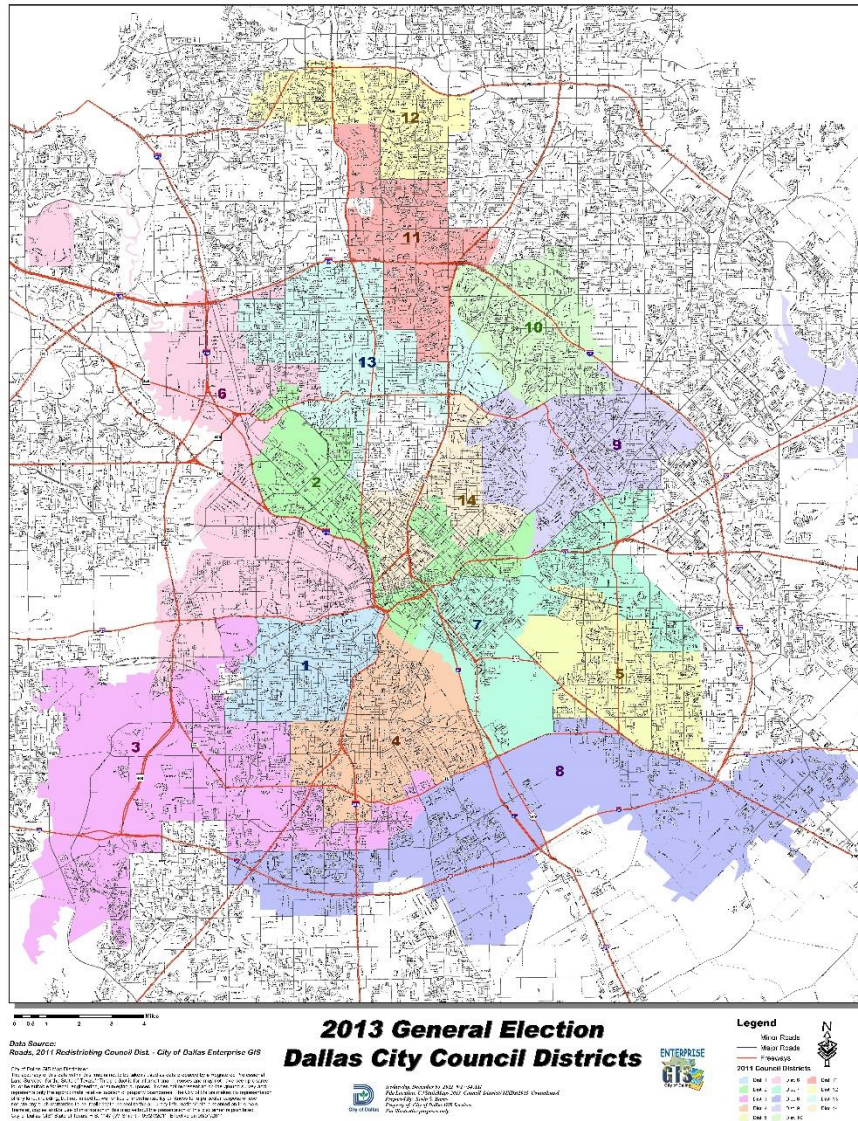




2021 DALLAS CITY REDISTRICTING

Recommended Districting Plan Report May 16, 2022

Current Districting Plan Approved 2011





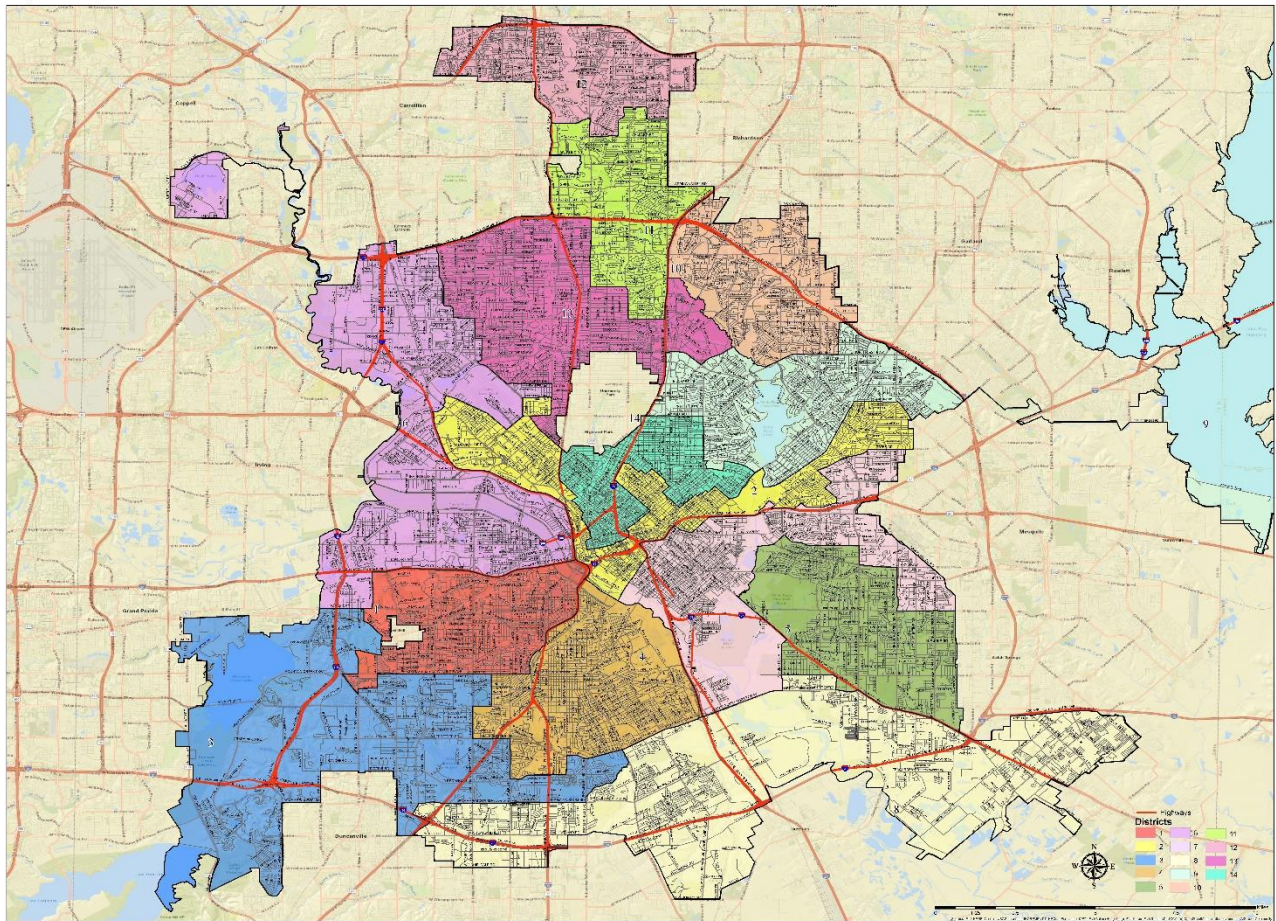
2021 DALLAS CITY REDISTRICTING

Recommended Districting Plan Report
May 16, 2022

Proposed Districting Plan for City Council Consideration



2021-22 City of Dallas Redistricting - Final Map COD-041-B submitted by Cm. Norma Minnis;
Amended by Cm. Randall Bryant; Cm. Brent Rosenthal; and Cm Bob Stimson (5-10-22)



Data Source: Bureau of Census PL94-171 Data, 2020 Blocks, Proposed Districts as submitted





2021 DALLAS CITY REDISTRICTING

2021 Redistricting Commissioners

Jesse D. Oliver (Chairman)
Diane Ragsdale (Vice-Chair)

Robert Stimson
Roy Carlos Lopez
Gregory Demus
Kebran Ware Alexander
Domingo Alberto Garcia
Ricardo Medrano
Randall Bryant
Brent M. Rosenthal
Alan Walne
Matthew R. Garcia
Jonathan Neerman
Barbara Brown Larkin
Norma Minnis



2021 DALLAS CITY REDISTRICTING

Report Contents

I.	Commission Submission Letter	Section 1
II.	Recommended Districting Plan Analysis	Section 2
III.	2021 Redistricting Guidelines	Section 3
IV.	City Charter Provisions	Section 4
V.	Tentative Schedule for Completion	Section 5



2021 DALLAS CITY REDISTRICTING

Section 1

Memorandum



CITY OF DALLAS

DATE May 16, 2022

TO Honorable Mayor Eric Johnson

SUBJECT **Final City of Dallas Districting Recommendation**

The 2021 Redistricting Commission (Commission) submits its enclosed districting plan for presentation to the City Council as required by the City Charter.

The Commission has worked diligently over the past eight months to develop a districting plan in a timely manner. The recommended districting plan, COD-041-B-FINAL, was adopted by the Commission by a 9 to 6 vote and approved to send to the mayor, as required by the City Charter, by a vote of 10 to 5 on Tuesday, May 10, 2022¹.

The Commission worked to make the process fair and equitable, with a stated goal of encouraging as much public participation as possible, even during a pandemic. As you know, the Commission worked with ARCBridge Consulting, Inc. to develop a website that enabled the public to use the 2020 Census data, develop and submit their own districting plans, and continuously comment on the very latest information throughout the commission's process. The website had a total of 38,899 visitors from October 2021 to April 2022, with a daily average of 238 visitors. In addition, the Commissioners were provided with individual email addresses where they received direct input from residents.

A total of 223 districting plans were created by the public via the Commission's website, 44 of which were finally submitted by the public. Thirty-two of the finally submitted plans met the criteria required by law, and rules adopted by the Commission and were considered by the Commission. Subsequent to presentation to the Commission of the plans by the submitters, the Commission approved a total of 17 plans for further consideration. After the close of the public plan submission period—December 2021 thru April 2022—the Commission began its final map selection process wherein it first selected three plans for further consideration, which were then reduced to two plans. Of note, one of which was developed and submitted by a resident. Indeed, it is this resident-created plan that serves as the foundation for the Commission's recommended plan.

Public feedback was encouraged throughout the process. The Office of Government Affairs worked with the City's Communications Outreach and Marketing team to develop a multi-language communications strategy with a focus on community outreach to promote the process, engage residents, and allow for public feedback. In addition to a multicultural advertising campaign, staff engaged media, stakeholders, and residents via

¹ Previously, a motion was made to approve another districting plan, COD-17-B. That motion failed by a vote of 7 to 8.

DATE May 16, 2022
SUBJECT **Final City of Dallas Districting Recommendation**

earned media mentions, social media, text alerts, public service announcements, eblasts, blogs, and in-kind outdoor advertising.

The commission hosted a series of eight town hall meetings beginning in December 2021 through February 2022. Six in-person town halls were regionally located at area recreation centers, and two were at Dallas City Hall, which allowed for both virtual and in-person participation. Meetings featured Spanish and American Sign Language (ASL) interpreters. The Office of Government Affairs worked with the Office of Equity and Inclusion to ensure the process was inclusive and allowed for all to participate. In fact, meetings featured Spanish and American Sign Language (ASL) interpreters, allowing for equitable language access. The Commission held 21 regular meetings at City Hall with both in-person and virtual public participation.

Commissioners repeatedly voiced their commitment to encourage public participation and hearing all public feedback throughout the process. A final public hearing was held on May 7, 2022, prior to the Commission adopting a final districting plan. Throughout the process, the Commission worked diligently to consider and accommodate the requests received from the public.

Prior to beginning the process of considering plans, the Commission developed and approved guidelines for its process on November 22, 2021 and applied those guidelines throughout its work. These guidelines required that Districts be substantially equal in population (approximately 93,170 per district) with a total population deviation of less than 10 percent between the largest district and the smallest district. Minor population deviations that exist where necessary to achieve a good faith, legitimate objective such as preserving the voting strength of minority populations; maintaining communities of interest and avoiding splitting neighborhoods; recognizing the traditional geographic, economic, cultural, or social center of an existing district as supported by public testimony; and following easily identifiable geographic boundaries and other unique geographical configurations.

The charts below provide a comparative analysis between the 2011 Approved Redistricting Plan, the 2020 Census for the Current City Council Districts, and the 2021 Proposed Redistricting Plan.

Total Population Breakdown																		
District	2011 Approved Redistricting Plan						2020 Census of Current Council Districts						Proposed Redistricting Plan					
	Hispanic		NH Black		NH White		Hispanic		NH Black		NH White		Hispanic		NH Black		NH White	
	#	%	#	%	#	%	#	%	#	%	#	%	#	%	#	%	#	%
District 1	66,177	79.17%	4,899	5.86%	11,630	13.91%	56,981	73.13%	5,369	6.89%	13,400	17.20%	68,037	75.82%	5,447	6.07%	13,858	15.44%
District 2	54,529	62.59%	11,988	13.76%	16,668	19.13%	42,969	45.03%	14,290	14.98%	29,704	31.13%	43,554	44.81%	14,272	14.68%	31,107	32.00%
District 3	40,772	45.38%	38,394	42.73%	8,640	9.62%	47,909	49.67%	36,319	37.66%	8,135	8.43%	42,140	45.24%	38,887	41.74%	8,032	8.62%
District 4	33,652	40.08%	45,709	54.44%	3,611	4.30%	45,849	51.00%	38,353	42.66%	3,350	3.73%	45,332	49.53%	40,422	44.17%	3,367	3.68%
District 5	57,659	70.64%	16,837	20.63%	6,579	8.06%	64,771	79.04%	11,575	14.13%	4,386	5.35%	69,745	78.59%	12,639	14.24%	5,033	5.67%
District 6	59,269	70.10%	14,213	16.81%	9,712	11.49%	59,136	67.82%	12,798	14.68%	11,609	13.31%	62,920	70.09%	12,969	14.45%	10,291	11.46%
District 7	31,269	38.21%	40,040	48.92%	9,091	11.11%	45,154	46.95%	39,099	40.65%	8,831	9.18%	41,422	46.47%	38,722	43.44%	6,232	6.99%
District 8	26,561	31.37%	49,689	58.68%	7,728	9.13%	44,280	44.07%	47,626	47.40%	6,200	6.17%	43,053	45.56%	43,224	45.74%	6,000	6.35%
District 9	20,332	23.24%	28,046	32.05%	33,189	37.93%	20,480	20.80%	32,230	32.73%	35,728	36.29%	27,751	30.09%	9,938	10.77%	46,403	50.31%
District 10	29,585	34.69%	11,252	13.20%	39,635	46.48%	30,883	32.86%	14,605	15.54%	39,762	42.31%	19,423	20.19%	31,879	33.14%	35,060	36.45%
District 11	26,088	29.25%	7,409	8.31%	50,451	56.56%	22,776	24.98%	8,338	9.15%	50,375	55.26%	31,545	32.50%	14,691	15.14%	41,843	43.12%
District 12	13,142	15.71%	6,236	7.45%	58,858	70.35%	15,319	14.33%	8,601	8.04%	71,119	66.51%	18,640	19.57%	19,850	20.84%	42,182	44.28%
District 13	33,045	38.27%	9,792	11.34%	40,485	46.88%	35,362	39.28%	9,625	10.69%	39,527	43.91%	23,665	24.68%	8,572	8.94%	53,556	55.86%
District 14	15,229	17.18%	15,130	17.07%	48,928	55.21%	19,305	19.63%	19,936	20.27%	44,267	45.01%	13,947	14.84%	7,252	7.72%	63,429	67.50%
Total	507,309	42.35%	299,634	25.02%	345,205	28.82%	551,174	42.26%	298,764	22.90%	366,393	28.09%	551,174	42.26%	298,764	22.90%	366,393	28.09%

Voting Age Population Breakdown																		
District	2011 Approved Redistricting Plan						2020 Census of Current Council Districts						Proposed Redistricting Plan					
	Hispanic		NH Black		NH White		Hispanic		NH Black		NH White		Hispanic		NH Black		NH White	
	#	%	#	%	#	%	#	%	#	%	#	%	#	%	#	%	#	%
District 1	42734	74.19%	3727	6.47%	10447	18.14%	41,197	69.64%	4,327	7.31%	11,877	20.08%	48,934	72.20%	4,626	6.83%	12,272	18.11%
District 2	36739	56.10%	9648	14.73%	15868	24.23%	32,937	40.71%	11,990	14.82%	28,419	35.12%	32,593	40.34%	11,764	14.56%	29,151	36.08%
District 3	25034	40.06%	28239	45.19%	7656	12.25%	32,383	45.84%	27,923	39.53%	7,213	10.21%	28,324	41.56%	29,570	43.38%	7,125	10.45%
District 4	20158	33.93%	35263	59.36%	3228	5.43%	29,875	46.23%	30,156	46.66%	2,908	4.50%	29,412	44.79%	31,621	48.16%	2,916	4.44%
District 5	34747	65.57%	11942	22.53%	5888	11.11%	43,290	75.72%	9,120	15.95%	3,899	6.82%	46,613	75.26%	9,914	16.01%	4,470	7.22%
District 6	38332	64.55%	11059	18.62%	8900	14.99%	40,788	63.53%	10,077	15.70%	10,453	16.28%	43,816	65.81%	10,393	15.61%	9,499	14.27%
District 7	19248	33.27%	29364	50.76%	8169	14.12%	29,991	43.07%	29,548	42.43%	7,753	11.13%	27,472	42.73%	29,277	45.54%	5,449	8.48%
District 8	15466	27.44%	34145	60.57%	6269	11.12%	27,358	39.99%	34,344	50.20%	5,068	7.41%	26,575	41.43%	31,147	48.55%	4,903	7.64%
District 9	12870	19.97%	19782	30.70%	27214	42.24%	13,911	18.97%	23,893	32.59%	28,342	38.66%	19,756	26.81%	7,895	10.71%	39,621	53.76%
District 10	19751	29.51%	8667	12.95%	34538	51.61%	21,804	28.78%	11,817	15.60%	34,932	46.11%	13,196	18.42%	23,657	33.03%	27,750	38.75%
District 11	16537	24.89%	5438	8.18%	40808	61.41%	15,928	22.35%	6,722	9.43%	41,768	58.62%	22,232	28.66%	11,851	15.28%	36,153	46.61%
District 12	10552	14.01%	5164	6.86%	54708	72.63%	12,899	13.37%	7,340	7.61%	65,818	68.20%	13,756	17.75%	15,492	19.99%	36,222	46.73%
District 13	20876	32.34%	7015	10.87%	34391	53.28%	24,414	35.50%	7,474	10.87%	32,871	47.79%	16,585	22.08%	6,889	9.17%	44,469	59.21%
District 14	10858	15.20%	11690	16.36%	41267	57.76%	14,187	17.88%	15,526	19.57%	37,446	47.20%	11,698	13.79%	6,161	7.26%	58,767	69.26%
Total	323902	36.78%	221143	25.11%	299351	33.99%	380,962	38.11%	230,257	23.03%	318,767	31.89%	380,962	38.11%	230,257	23.03%	318,767	31.89%


Districts were drawn to be geographically compact, to the extent possible, and composed of contiguous territory. ARCBridge Consulting’s evaluation included tests, such as the Polsby-Popper, Reock, Convex Hull Ratio, and Schwartzburg, to evaluate compactness. Where possible, the final districting plan maintains communities of interest, and limits splitting of neighborhoods.

As required by the United States Constitution, the Voting Rights Act, and other federal and state laws, the Commission 2021 conscientiously followed guidelines regarding population equality, minority representation, and contiguity and compactness. Other guidelines included configuring districts for purposes of neither protecting nor defeating an incumbent while attempting, where possible, to maintain communities of interest in a single district and to avoid splitting neighborhoods.

DATE May 16, 2022
SUBJECT **Final City of Dallas Districting Recommendation**

The Commission acknowledges that the redistricting process endured many challenges throughout this global pandemic. At every step, the Commission worked to identify reasonable solutions and compromises to these challenges while pursuing the City's goals of a fair and equitable redistricting process that likewise would result in full, fair, and equitable representation to all residents of the City of Dallas. The Commission recognizes that this plan will not be universally accepted; however, it is a conscientious effort to present a plan that can meet the City of Dallas' goals and those of its residents over the next 10 years.

Sincerely,



Jesse Oliver
Chair
Redistricting Commission



Diane Ragsdale
Vice-Chair
Redistricting Commission

c: City of Dallas Redistricting Commission
Dallas City Council
T.C. Broadnax, City Manager
Chris Caso, City Attorney
Mark Swann, City Auditor
Billierae Johnson, City Secretary



2021 DALLAS CITY REDISTRICTING

Section 2



City of Dallas 2021-22 Redistricting

Analysis of Final Map COD-041-B to be submitted to the Mayor

Plan Summary – Plan ID: COD-041-B (Plan: Based on COD-041; By Cm. Norma Minnis with Amendments by Cm. Randall Bryant; Cm. Brent Rosenthal; & Cm. Bob Stimson)

Date Approved by the Commission – 5-10-22

Current Status: Meets the City of Dallas Redistricting Criteria; To be submitted to the Mayor

REVIEW CRITERIA FOR PLAN ACCEPTANCE

1. Maximum Deviation Less than 10%: Population Difference between most populated and least populated district divided by ideal population is less than 10%

Plan meets Criteria

Plan does not meet Criteria

Plan Max Deviation – 9.07%

2. Contiguity: All districts should be geographically contiguous.

Plan meets Criteria

Plan does not meet Criteria

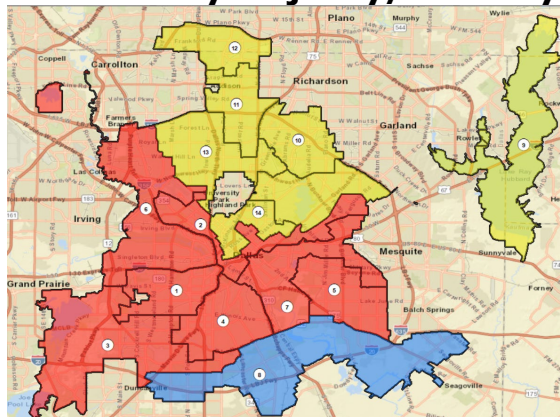
3. Unassigned Units – None

Plan meets Criteria

Plan does not meet Criteria

4. Other Map Characteristics for further evaluation:

1. No. of Minority Majority/Plurality Districts: 8



NH-Black – 1(8)

Hispanic – 7
(1, 2, 3, 4, 5, 6, 7)

(NH White – Yellow, Hispanic – Red; NH Black – Blue)

Total Population by Race and Ethnicity

	Total Population	Deviation		Hispanic		NH-White		NH-Black		NH-Asian		NH-Other	
		#	%	#	%	#	%	#	%	#	%	#	%
1	89,740	-3,430.00	-3.68%	68,037	75.82%	13,858	15.44%	5,447	6.07%	597	0.67%	1,345	1.50%
2	97,201	4,031.00	4.33%	43,554	44.81%	31,107	32.00%	14,272	14.68%	4,386	4.51%	2,904	2.99%
3	93,156	-14.00	-0.02%	42,140	45.24%	8,032	8.62%	38,887	41.74%	1,489	1.60%	1,651	1.77%
4	91,522	-1,648.00	-1.77%	45,332	49.53%	3,367	3.68%	40,422	44.17%	375	0.41%	1,340	1.46%
5	88,748	-4,422.00	-4.75%	69,745	78.59%	5,033	5.67%	12,639	14.24%	134	0.15%	803	0.90%
6	89,772	-3,398.00	-3.65%	62,920	70.09%	10,291	11.46%	12,969	14.45%	1,688	1.88%	1,184	1.32%
7	89,143	-4,027.00	-4.32%	41,422	46.47%	6,232	6.99%	38,722	43.44%	676	0.76%	1,417	1.59%
8	94,503	1,333.00	1.43%	43,053	45.56%	6,000	6.35%	43,224	45.74%	228	0.24%	1,295	1.37%
9	92,241	-929.00	-1.00%	27,751	30.09%	46,403	50.31%	9,938	10.77%	3,664	3.97%	2,757	2.99%
10	96,197	3,027.00	3.25%	19,423	20.19%	35,060	36.45%	31,879	33.14%	4,489	4.67%	2,529	2.63%
11	97,049	3,879.00	4.16%	31,545	32.50%	41,843	43.12%	14,691	15.14%	4,539	4.68%	2,798	2.88%
12	95,266	2,096.00	2.25%	18,640	19.57%	42,182	44.28%	19,850	20.84%	8,573	9.00%	3,473	3.65%
13	95,868	2,698.00	2.90%	23,665	24.68%	53,556	55.86%	8,572	8.94%	4,835	5.04%	2,327	2.43%
14	93,973	803.00	0.86%	13,947	14.84%	63,429	67.50%	7,252	7.72%	4,518	4.81%	3,705	3.94%
	1,304,379		9.07%	551,174	42.26%	366,393	28.09%	298,764	22.90%	40,191	3.08%	29,528	2.26%

Total Voting Age Population by Race and Ethnicity

	Total Voting Age Population	Hispanic		NH-White		NH-Black		NH-Asian		NH-Other	
		#	%	#	%	#	%	#	%	#	%
1	67,774	48,934	72.20%	12,272	18.11%	4,626	6.83%	597	0.88%	1,345	1.98%
2	80,798	32,593	40.34%	29,151	36.08%	11,764	14.56%	4,386	5.43%	2,904	3.59%
3	68,159	28,324	41.56%	7,125	10.45%	29,570	43.38%	1,489	2.18%	1,651	2.42%
4	65,664	29,412	44.79%	2,916	4.44%	31,621	48.16%	375	0.57%	1,340	2.04%
5	61,934	46,613	75.26%	4,470	7.22%	9,914	16.01%	134	0.22%	803	1.30%
6	66,580	43,816	65.81%	9,499	14.27%	10,393	15.61%	1,688	2.54%	1,184	1.78%
7	64,291	27,472	42.73%	5,449	8.48%	29,277	45.54%	676	1.05%	1,417	2.20%
8	64,148	26,575	41.43%	4,903	7.64%	31,147	48.55%	228	0.36%	1,295	2.02%
9	73,693	19,756	26.81%	39,621	53.76%	7,895	10.71%	3,664	4.97%	2,757	3.74%
10	71,621	13,196	18.42%	27,750	38.75%	23,657	33.03%	4,489	6.27%	2,529	3.53%
11	77,573	22,232	28.66%	36,153	46.61%	11,851	15.28%	4,539	5.85%	2,798	3.61%
12	77,516	13,756	17.75%	36,222	46.73%	15,492	19.99%	8,573	11.06%	3,473	4.48%
13	75,105	16,585	22.08%	44,469	59.21%	6,889	9.17%	4,835	6.44%	2,327	3.10%
14	84,849	11,698	13.79%	58,767	69.26%	6,161	7.26%	4,518	5.32%	3,705	4.37%
	999,705	380,962	38.11%	318,767	31.89%	230,257	23.03%	40,191	4.02%	29,528	2.95%

The Majority/Plurality District percentages are in bold

2. No. of Neighborhoods splits - 42 out of 443 Neighborhood Associations

3. Compactness analysis for each district:

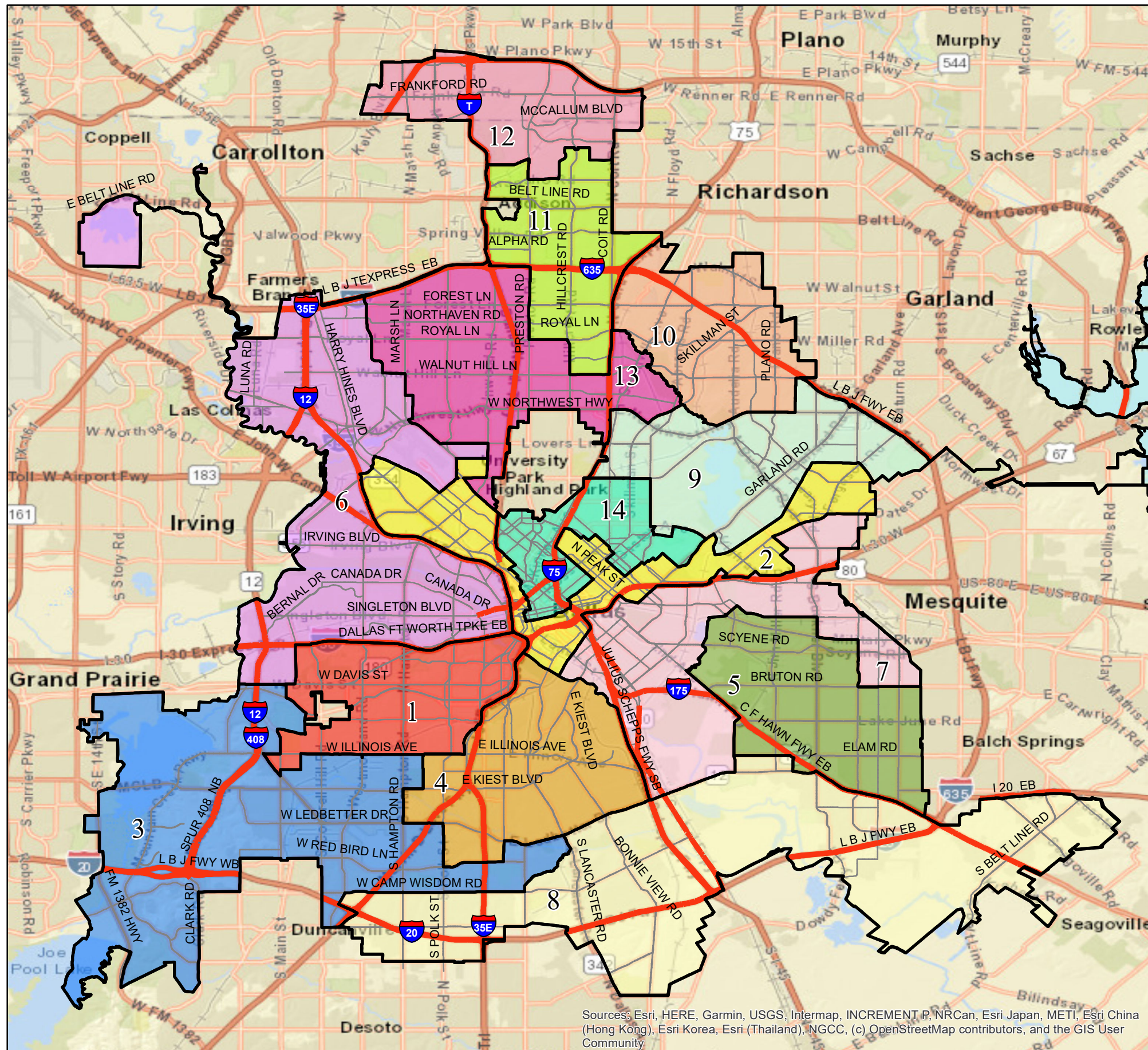
District	Area:	Perimeter:	Reock	Polsby-Popper	Convex Hull Ratio:	Schwartzberg
District 1	16.01	25.69	0.34	0.30	0.79	0.55
District 2	18.38	50.26	0.12	0.09	0.36	0.30
District 3	48.54	64.15	0.25	0.15	0.62	0.39
District 4	20.86	21.98	0.34	0.54	0.85	0.74
District 5	19.97	22.39	0.35	0.50	0.84	0.71
District 6	42.08	71.78	0.16	0.10	0.43	0.32
District 7	24.67	40.50	0.21	0.19	0.54	0.43
District 8	54.40	64.15	0.17	0.17	0.61	0.41
District 9	58.62	118.02	0.12	0.05	0.31	0.23
District 10	16.43	21.69	0.38	0.44	0.85	0.66
District 11	15.17	24.40	0.31	0.32	0.73	0.57
District 12	14.71	21.35	0.30	0.41	0.80	0.64
District 13	23.80	34.86	0.27	0.25	0.69	0.50
District 14	9.69	22.44	0.28	0.24	0.68	0.49
Average	27.38	43.12	0.26	0.27	0.65	0.49



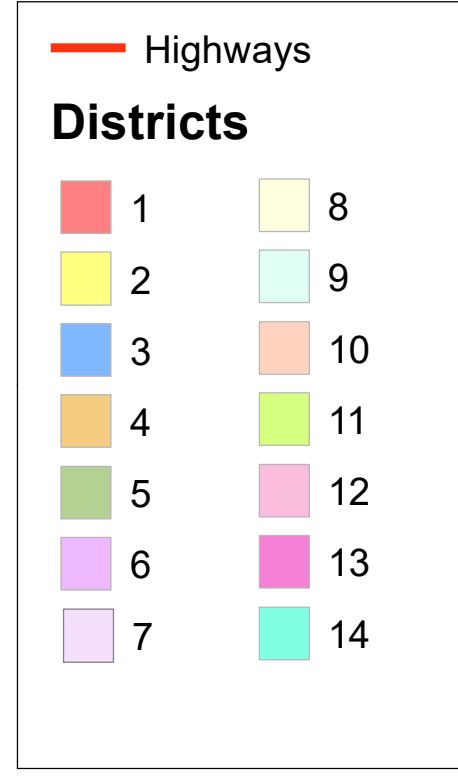
2021/22 City of Dallas Redistricting 5-10-22

Map Meets the Redistricting Criteria

Final Map COD-041-B by Cm. Norma Minnis; Amended by Cm. Bryant; Cm. Rosenthal; & Cm. Stimson



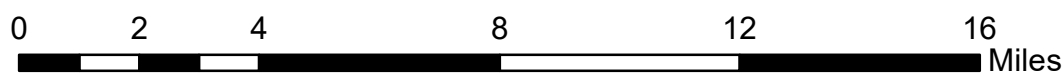
General Information	
Plan-ID	COD-041-B
	Cm. Norma Minnis; Amended by Cm. Bryant; Cm. Rosenthal; Cm. Bob
Plan Creator	Stimson
Submitted On	5/9/2010
Status	Meets Criteria
Deviation, Area and Perimeter	
Maximum Deviation	9.07%
Average Area	27.38
Average Perimeter	43.12
Average Compactness Scores	
Average Reock Score	0.26
Average Polsby-Popper Score	0.27
Average Convex Hull Score	0.65
Average Schwartzberg Score	0.49
Minority Majority Districts	
Number of Minority/Plurality Districts	8(1 NHB, 7 Hisp)
Number of Neighborhood splits	42



	Total Population	Deviation		Hispanic		NH-White		NH-Black		NH-Asian		NH-Other	
		#	%	#	%	#	%	#	%	#	%	#	%
1	89,740	-3,430.00	-3.68%	68,037	75.82%	13,858	15.44%	5,447	6.07%	597	0.67%	1,345	1.50%
2	97,201	4,031.00	4.33%	43,554	44.81%	31,107	32.00%	14,272	14.68%	4,386	4.51%	2,904	2.99%
3	93,156	-14.00	-0.02%	42,140	45.24%	8,032	8.62%	38,887	41.74%	1,489	1.60%	1,651	1.77%
4	91,522	-1,648.00	-1.77%	45,332	49.53%	3,367	3.68%	40,422	44.17%	375	0.41%	1,340	1.46%
5	88,748	-4,422.00	-4.75%	69,745	78.59%	5,033	5.67%	12,639	14.24%	134	0.15%	803	0.90%
6	89,772	-3,398.00	-3.65%	62,920	70.09%	10,291	11.46%	12,969	14.45%	1,688	1.88%	1,184	1.32%
7	89,143	-4,027.00	-4.32%	41,422	46.47%	6,232	6.99%	38,722	43.44%	676	0.76%	1,417	1.59%
8	94,503	1,333.00	1.43%	43,053	45.56%	6,000	6.35%	43,224	45.74%	228	0.24%	1,295	1.37%
9	92,241	-929.00	-1.00%	27,751	30.09%	46,403	50.31%	9,938	10.77%	3,664	3.97%	2,757	2.99%
10	96,197	3,027.00	3.25%	19,423	20.19%	35,060	36.45%	31,879	33.14%	4,489	4.67%	2,529	2.63%
11	97,049	3,879.00	4.16%	31,545	32.50%	41,843	43.12%	14,691	15.14%	4,539	4.68%	2,798	2.88%
12	95,266	2,096.00	2.25%	18,640	19.57%	42,182	44.28%	19,850	20.84%	8,573	9.00%	3,473	3.65%
13	95,868	2,698.00	2.90%	23,665	24.68%	53,556	55.86%	8,572	8.94%	4,835	5.04%	2,327	2.43%
14	93,973	803.00	0.86%	13,947	14.84%	63,429	67.50%	7,252	7.72%	4,518	4.81%	3,705	3.94%
	1,304,379		9.07%	551,174	42.26%	366,393	28.09%	298,764	22.90%	40,191	3.08%	29,528	2.26%

	Total Voting Age Population	Hispanic		NH-White		NH-Black		NH-Asian		NH-Other	
		#	%	#	%	#	%	#	%	#	%
1	67,774	48,934	72.20%	12,272	18.11%	4,626	6.83%	597	0.88%	1,345	1.98%
2	80,798	32,593	40.34%	29,151	36.08%	11,764	14.56%	4,386	5.43%	2,904	3.59%
3	68,159	28,324	41.56%	7,125	10.45%	29,570	43.38%	1,489	2.18%	1,651	2.42%
4	65,664	29,412	44.79%	2,916	4.44%	31,621	48.16%	375	0.57%	1,340	2.04%
5	61,934	46,613	75.26%	4,470	7.22%	9,914	16.01%	134	0.22%	803	1.30%
6	66,580	43,816	65.81%	9,499	14.27%	10,393	15.61%	1,688	2.54%	1,184	1.78%
7	64,291	27,472	42.73%	5,449	8.48%	29,277	45.54%	676	1.05%	1,417	2.20%
8	64,148	26,575	41.43%	4,903	7.64%	31,147	48.55%	228	0.36%	1,295	2.02%
9	73,693	19,756	26.81%	39,621	53.76%	7,895	10.71%	3,664	4.97%	2,757	3.74%
10	71,621	13,196	18.42%	27,750	38.75%	23,657	33.03%	4,489	6.27%	2,529	3.53%
11	77,573	22,232	28.66%	36,153	46.61%	11,851	15.28%	4,539	5.85%	2,798	3.61%
12	77,516	13,756	17.75%	36,222	46.73%	15,492	19.99%	8,573	11.06%	3,473	4.48%
13	75,105	16,585	22.08%	44,469	59.21%	6,889	9.17%	4,835	6.44%	2,327	3.10%
14	84,849	11,698	13.79%	58,767	69.26%	6,161	7.26%	4,518	5.32%	3,705	4.37%
	999,705	380,962	38.11%	318,767	31.89%	230,257	23.03%	40,191	4.02%	29,528	2.95%

Sources: Esri, HERE, Garmin, USGS, Intermap, INCREMENT P, NRCan, Esri Japan, METI, Esri China (Hong Kong), Esri Korea, Esri (Thailand), NGCC, (c) OpenStreetMap contributors, and the GIS User Community



Demographic Data Source: 2020 - PL94-171 Data from Bureau of Census; Geography: 2020 Census Blocks from the Bureau of Census; Districts: As Drawn by the Plan Submitter





2021 DALLAS CITY REDISTRICTING

Section 3

2021 Redistricting Guidelines

The Redistricting Commission adopted the following guidelines on November 22, 2021 and applied them consistently in considering proposed districting plans. The Redistricting Commission acknowledges that in some instances, the guidelines may appear to conflict with each other; however, the commission worked to use the guidelines in coordination with each other.

A. The following guidelines regarding Population Equality, Minority Representation, Contiguity and Compactness, Incumbents, and Communities of Interest shall be applied as required by the United States Constitution, the Voting Rights Act, other federal and state laws, and the City Charter.

1. Population Equality

The districts shall be substantially equal in population according to the total population count as presented in the census data, except where deviation is required to comply with, or is allowable by law.

The total deviation between the largest and the smallest district must be as small as possible but should be less than 10 percent.

Minor population deviations may be allowed if they are necessary to achieve a good faith, legitimate objective, such as:

- Preserving the voting strength of minority populations in compliance with the Voting Rights Act.
- Making the districts compact.
- Maintaining communities of interest in a single district and avoiding splitting neighborhoods.

- Using public school attendance boundaries as defined by the independent school districts in the City of Dallas to assist in defining neighborhoods.
- Preserving the cores of existing districts as permitted by law, meaning to recognize the traditional geographic, economic, cultural, or social center of an existing district as supported by public testimony.
- Following easily identifiable geographic boundaries and other unique geographical configurations.

2. Minority Representation

There shall be no discrimination on the basis of race, color, or membership in a language minority group, and the voting strength of racial, ethnic, and language minorities in the districts shall not be diluted to deprive minority voters of an equal opportunity to elect a candidate of their choice.

Race, ethnicity, and language minority consideration cannot be the predominant factor to which other districting legal principles are subordinated.

The reconfiguration of districts may not create a retrogression of the rights of minority voters to elect a candidate of their choice.

A majority minority district may be created to provide fair representation to the members of racial, ethnic, and language minority populations where compelling justification requires such a district as determined by the following factors:

- A reasonably compact district can be drawn in compliance with the other redistricting guidelines in which voters of the minority

group constitute a majority of the electorate and will increase the probability that members of the minority will be elected.

- The minority community is politically cohesive and usually votes together.
- Other voters in the area generally vote as a bloc to successfully defeat the minority community's preferred candidates.

3. Contiguity and Compactness

The districts shall be geographically compact, to the extent possible, and composed of contiguous territory.

Compactness and contiguity involve both a functional and a geographic aspect and are defined by case law to include factors such as:

- Contiguity: No part of the district should be geographically separated from any other part of the district.
- Compactness: A district is generally considered reasonably compact if it has a fairly regular geometric shape (circle, square, hexagon) with constituents all living relatively near to each other and having minimum distances between all parts of a constituency.

4. Incumbents

The reconfiguration of districts shall be neutral as to incumbents or potential candidates.

5. Communities of Interest

Communities of interest shall be placed in a single district and attempts should be made to avoid splitting neighborhoods, where possible without violating the other requirements.

“Neighborhoods” and “Communities of Interest” may be defined by:

- Geographically compact areas where there are people who share clearly recognizable similarities of social, political, cultural, ethnic, religious, or economic interests.
- Homeowner associations, neighborhood associations, crime watch groups and preservation/historic districts.
- The existence of shared interests, including a history and tradition of working together and relating to each other.
- The use of public-school attendance boundaries as defined by the independent school districts in the City of Dallas.
- Boundaries that facilitate communications between constituents and their elected representatives.
- Easily identifiable geographic boundaries such as highways, major thoroughfares, and natural waterways.



2021 DALLAS CITY REDISTRICTING

Section 4

DALLAS CITY CHARTER

CHAPTER IV. ELECTIONS AND REFERENDUMS

SEC. 5. DISTRICTS AND REDISTRICTING.

(a) The city shall be divided into 14 districts, known as Districts 1, 2, 3, 4, 5, 6, 7, 8, 9, 10, 11, 12, 13, and 14.

(b) Redistricting commission.

(1) Not later than 30 days after the city council is briefed on the federal decennial census taken in the prior year, each member of the city council shall appoint one member of the redistricting commission. The mayor shall designate the chair of the redistricting commission, subject to confirmation by a majority of the city council. In making such appointments, the city council and the mayor shall, as nearly as may be practicable, provide fair and balanced representation of all geographical areas of the city in the redistricting process and provide a total membership that reflects the racial and ethnic makeup of the city's population. Members of the redistricting commission shall be appointed to serve a term that will end upon completion of the redistricting commission's work.

(2) Persons appointed to the redistricting commission must be registered to vote and meet the qualifications for service on a city commission. A member of the city council is not eligible for appointment to the redistricting commission. A member of the redistricting commission is not eligible to be a candidate for a place on the city council in the next succeeding general election of the city, and may not be appointed or elected to the city council or to any other official board or commission of the city for a period of one year after service on the redistricting commission.

(3) The redistricting commission shall draw the districts in compliance with the following guidelines:

(A) The districts shall be substantially equal in population according to the total population count as presented in the census data, except where deviation is required to comply with federal law or is allowable by law.

(B) In addition to the requirements of federal law, there shall be no discrimination on the basis of race, color, or membership in a language minority group, and the voting strength of racial, ethnic, and language minorities in the districts shall not be diluted to deprive minority voters of an equal opportunity to elect a candidate of their choice.

(C) The districts shall be geographically compact, to the extent possible, and composed of contiguous territory.

(D) The reconfiguration of districts shall be neutral as to incumbents or potential candidates.

(E) Communities of interest shall be placed in a single district and attempts should be made to avoid splitting neighborhoods, where possible without violating the other requirements.

(F) The redistricting commission may adopt any other requirements of federal or state law.

(4) The redistricting commission shall promptly convene in such sessions as are necessary, including public hearings, to develop, prepare, and recommend a districting plan that proposes the respective boundaries of the various districts comprising the city council under this Charter.

(5) City council members may not have contact, directly or indirectly, with a redistricting commission member, or with redistricting commission staff, with respect to redistricting, except by testimony in an open meeting. Redistricting commission members may not engage in any discussions, directly or indirectly, regarding redistricting or the work of the redistricting commission with city council members, except during an open meeting or by written communication given to the entire redistricting commission. If a redistricting commission member engages in a prohibited discussion or violates the Texas Open Meetings Act, the redistricting commission may, by majority vote, remove the commissioner from the redistricting commission.

(6) Upon completion of its work, the redistricting commission shall file its recommended districting plan with the mayor. The mayor shall present the recommended plan to the city council at its next meeting. The city council shall adopt the plan as submitted or shall modify and adopt the plan, in either case within 45 days of receipt by the mayor. Any modification or change to the plan

must be made in open session at a city council meeting, with a written explanation of the need for the modification or change and a copy of the proposed map with the modification or change made available to the public 72 hours before a vote, and the proposed plan must be approved by a vote of three-fourths of the members of the city council. If final action is not taken by the city council within 45 days after the plan was presented to the mayor, then the recommended plan of the redistricting commission will become the final districting plan for the city.

(7) The districting plan developed in accordance with this section must be implemented at the next general election of the city council conducted at least 90 days following the date the final districting plan becomes effective for the city.



2021 DALLAS CITY REDISTRICTING

Section 5

COMMISSION'S PROPOSED SCHEDULE FOR COMPLETION

**MAY
2**

FINAL MAP SELECTION:
AMENDMENT WORKSHOP

**MAY
7**

FINAL MAP SELECTION:
PUBLIC HEARING

**MAY
9**

FINAL MAP SELECTION:
AMENDMENT WORKSHOP

**MAY
10**

FINAL MAP SELECTION:
AMENDMENT WORKSHOP & VOTE

**MAY
16**

SUBMIT FINAL MAP PROPOSAL TO
MAYOR

**MAY
18**

FINAL MAP PROPOSAL BRIEFING TO
CITY COUNCIL

**JUNE
22**

LAST CITY COUNCIL MEETING BEFORE
EXPIRATION OF 45 DAY DEADLINE

**JUNE
29**

EXPIRATION of 45 DAY CHARTER
REQUIREMENT FOR COUNCIL CONSIDERATION