



2021 DALLAS CITY REDISTRICTING

AMENDED PLANS

ACCEPTED DURING MAP
AMENDMENT WORKSHOP:

MAY 2, 2022



City of Dallas 2021-22 Redistricting

Submitted Map Analysis

Plan Summary – Plan ID: COD-017-A (Submitter: Cm. Domingo Garcia)
This is an amendment to COD-017- RB-BS-RL

Date Submitted: - 5-2-22

Current Status: Meets the City of Dallas Redistricting Criteria

REVIEW CRITERIA FOR PLAN ACCEPTANCE

1. Maximum Deviation Less than 10%: Population Difference between most populated and least populated district divided by ideal population is less than 10%

Plan meets Criteria

Plan does not meet Criteria

Plan Max Deviation – 9.06%

2. Contiguity: All districts should be geographically contiguous.

Plan meets Criteria

Plan does not meet Criteria

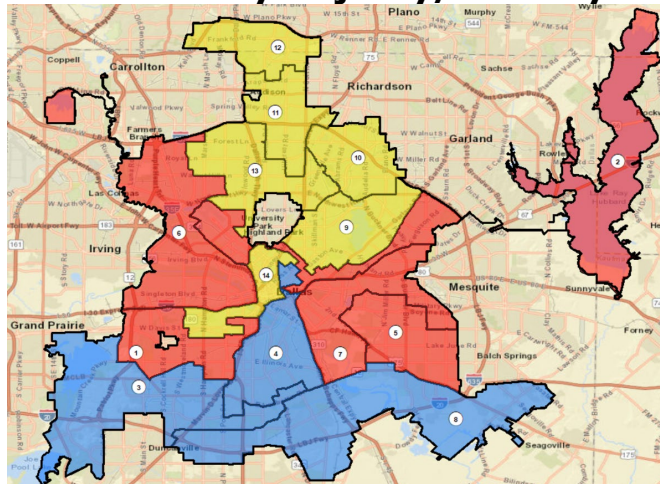
3. Unassigned Units – None

Plan meets Criteria

Plan does not meet Criteria

4. Other Map Characteristics for further evaluation:

1. No. of Minority Majority/Plurality Districts: 8 (Total Pop)



NH-Black – 3

(3, 4, 8,)

Hispanic – 5

(1, 2, 5, 6, 7)

(NH White – Yellow, Hispanic – Red; NH Black – Blue)

Total Population by Race and Ethnicity

	Total Population	Deviation		Hispanic		NH-White		NH-Black		NH-Asian		NH-Other	
		#	%	#	%	#	%	#	%	#	%	#	%
1	88,621	-4,549.00	-4.88%	73,265	82.67%	6,752	7.62%	6,723	7.59%	619	0.70%	1,262	1.42%
2	93,907	737.00	0.79%	47,726	50.82%	27,197	28.96%	11,456	12.20%	4,412	4.70%	3,116	3.32%
3	88,810	-4,360.00	-4.68%	34,772	39.15%	7,930	8.93%	42,257	47.58%	1,519	1.71%	2,332	2.63%
4	88,779	-4,391.00	-4.71%	37,155	41.85%	9,191	10.35%	38,695	43.59%	1,334	1.50%	2,404	2.71%
5	90,344	-2,826.00	-3.03%	71,124	78.73%	5,035	5.57%	12,842	14.21%	171	0.19%	1,172	1.30%
6	96,438	3,268.00	3.51%	64,792	67.19%	13,688	14.19%	13,786	14.30%	2,354	2.44%	1,818	1.89%
7	92,295	-875.00	-0.94%	42,714	46.28%	8,077	8.75%	38,528	41.74%	884	0.96%	2,092	2.27%
8	94,547	1,377.00	1.48%	43,077	45.56%	6,000	6.35%	43,236	45.73%	316	0.33%	1,918	2.03%
9	96,504	3,334.00	3.58%	20,135	20.86%	61,673	63.91%	7,062	7.32%	3,033	3.14%	4,601	4.77%
10	96,132	2,962.00	3.18%	19,403	20.18%	35,053	36.46%	31,842	33.12%	6,114	6.36%	3,720	3.87%
11	97,062	3,892.00	4.18%	31,550	32.50%	41,848	43.11%	14,692	15.14%	5,140	5.30%	3,832	3.95%
12	95,253	2,083.00	2.24%	18,635	19.56%	42,177	44.28%	19,849	20.84%	9,840	10.33%	4,752	4.99%
13	96,525	3,355.00	3.60%	21,277	22.04%	54,736	56.71%	9,235	9.57%	7,652	7.93%	3,625	3.76%
14	89,162	-4,008.00	-4.30%	25,549	28.65%	47,036	52.75%	8,561	9.60%	4,432	4.97%	3,584	4.02%
	1,304,379		9.06%	551,174	42.26%	366,393	28.09%	298,764	22.90%	47,820	3.67%	40,228	3.08%

Total Voting Age Population by Race and Ethnicity

	Total Voting Age Population	Hispanic		NH-White		NH-Black		NH-Asian		NH-Other	
		#	%	#	%	#	%	#	%	#	%
1	64,569	52,020	80.56%	5,977	9.26%	5,104	7.90%	511	0.79%	957	1.48%
2	76,046	34,755	45.70%	25,260	33.22%	9,566	12.58%	3,960	5.21%	2,505	3.29%
3	65,343	22,966	35.15%	7,033	10.76%	32,415	49.61%	1,270	1.94%	1,659	2.54%
4	66,509	24,503	36.84%	8,573	12.89%	30,472	45.82%	1,175	1.77%	1,786	2.69%
5	62,934	47,445	75.39%	4,472	7.11%	10,073	16.01%	135	0.21%	809	1.29%
6	71,718	45,183	63.00%	12,337	17.20%	10,910	15.21%	1,958	2.73%	1,330	1.85%
7	66,895	28,573	42.71%	7,050	10.54%	29,017	43.38%	756	1.13%	1,499	2.24%
8	64,168	26,583	41.43%	4,903	7.64%	31,156	48.55%	228	0.36%	1,298	2.02%
9	78,108	14,667	18.78%	51,946	66.51%	5,667	7.26%	2,604	3.33%	3,224	4.13%
10	71,587	13,184	18.42%	27,750	38.76%	23,636	33.02%	4,489	6.27%	2,528	3.53%
11	77,584	22,237	28.66%	36,157	46.60%	11,851	15.28%	4,539	5.85%	2,800	3.61%
12	77,505	13,751	17.74%	36,218	46.73%	15,492	19.99%	8,573	11.06%	3,471	4.48%
13	76,800	15,044	19.59%	45,981	59.87%	7,502	9.77%	5,746	7.48%	2,527	3.29%
14	79,939	20,051	25.08%	45,110	56.43%	7,396	9.25%	4,247	5.31%	3,135	3.92%
	999,705	380,962	38.11%	318,767	31.89%	230,257	23.03%	40,191	4.02%	29,528	2.95%

The Majority/Plurality District percentages are in bold

2. No. of Neighborhoods splits - 49 out of 443 Neighborhood Associations

3. Compactness analysis for each district:

District	Area:	Perimeter:	Reock	Polsby-Popper	Convex Hull Ratio:	Schwartzberg
District 1	18.00	32.16	0.33	0.22	0.69	0.47
District 2	56.01	140.42	0.08	0.04	0.22	0.19
District 3	46.33	65.03	0.22	0.14	0.58	0.37
District 4	21.46	30.28	0.24	0.29	0.76	0.54
District 5	20.25	22.18	0.35	0.52	0.85	0.72
District 6	42.12	68.19	0.17	0.11	0.44	0.34
District 7	24.48	36.77	0.23	0.23	0.57	0.48
District 8	54.52	64.06	0.17	0.17	0.61	0.41
District 9	20.70	23.36	0.32	0.48	0.85	0.69
District 10	15.72	19.81	0.39	0.50	0.87	0.71
District 11	15.77	26.07	0.30	0.29	0.72	0.54
District 12	14.70	21.13	0.30	0.41	0.81	0.64
District 13	23.04	36.68	0.27	0.22	0.66	0.46
District 14	10.23	25.57	0.20	0.20	0.53	0.44
Average	27.38	43.69	0.26	0.27	0.65	0.50



2021-22 City of Dallas Redistricting -Plan Submission - COD-017-A submitted on 5-2-22 by Cm. Domingo Garcia as an Amendment to COD-017-RB-BS-RL

Map Meets the Redistricting Criteria

General Information	
Plan-ID	COD-017-A
Submitted By	Domingo Garcia
Submitted On	5/2/2022
Status	Meets Criteria
Deviation, Area and Perimeter	
Maximum Deviation	9.06%
Average Area	27.38
Average Perimeter	43.69
Average Compactness Scores	
Average Reock Score	0.26
Average Polsby-Popper Score	0.27
Average Convex Hull Score	0.65
Average Schwartzberg Score	0.50
Minority Majority Districts	
Number of Minority/Plurality Districts	8(3-NHB,5 Hisp)
Number of Neighborhood splits	49

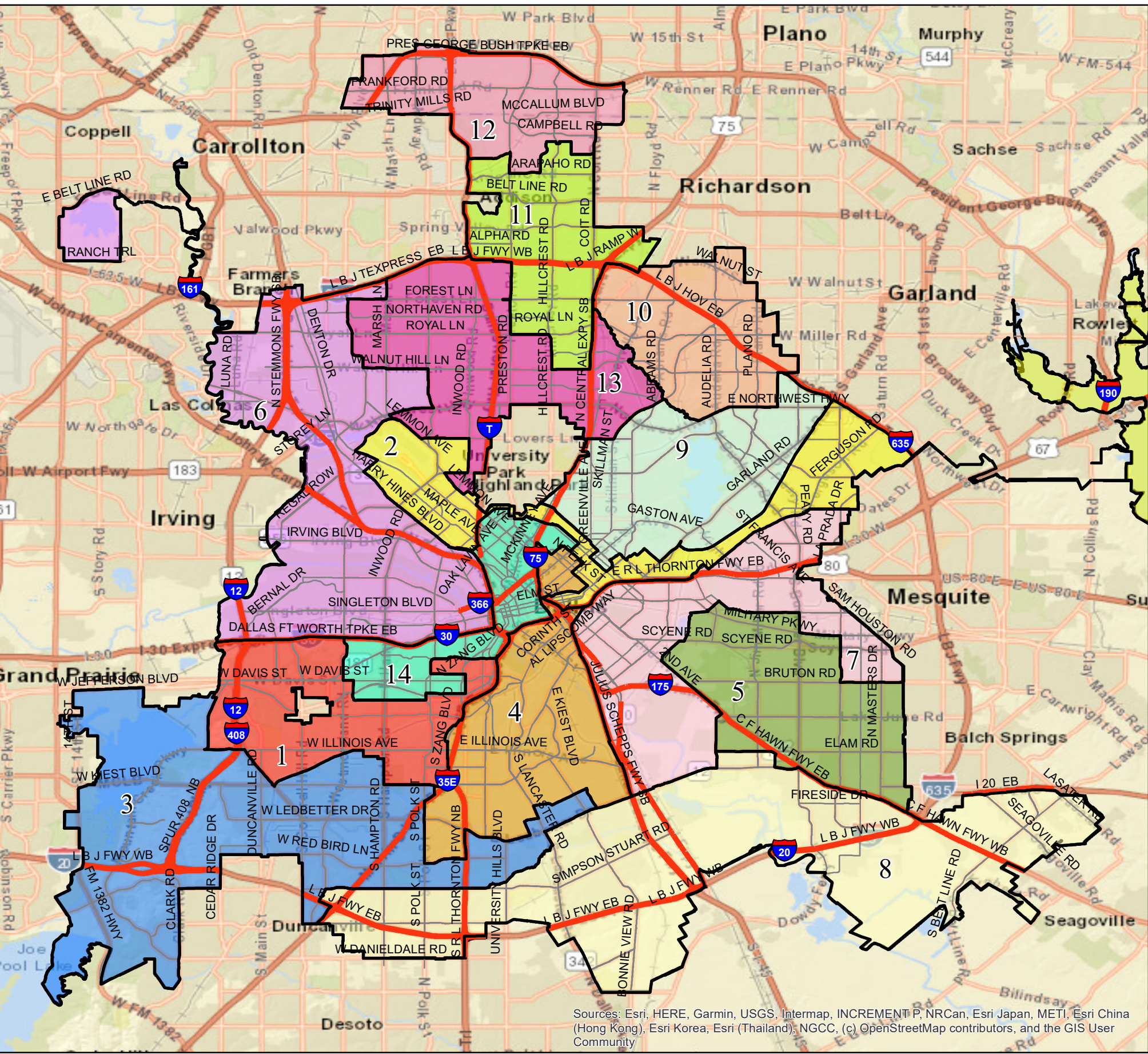
Highways

Districts

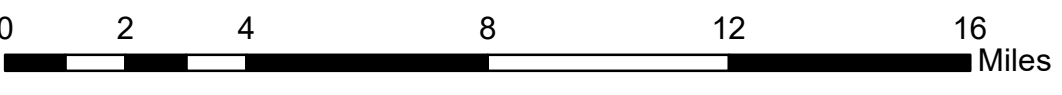
- 1
- 2
- 3
- 4
- 5
- 6
- 7
- 8
- 9
- 10
- 11
- 12
- 13
- 14

	Total Population		Deviation		Hispanic		NH-White		NH-Black		NH-Asian		NH-Other	
	#	%	#	%	#	%	#	%	#	%	#	%	#	%
1	88,621	-4,549.00	-4.88%	73,265	82.67%	6,752	7.62%	7,591	0.70%	1,262	1.42%			
2	93,907	-4,360.00	-4.68%	47,726	50.82%	27,197	28.96%	11,456	12.20%	4,412	4.70%	3,116	3.32%	
3	88,810	-4,360.00	-4.68%	34,772	39.15%	7,930	8.93%	42,257	47.58%	1,519	1.71%	2,332	2.63%	
4	88,779	-4,391.00	-4.71%	37,155	41.85%	9,191	10.35%	38,695	43.59%	1,334	1.50%	2,404	2.71%	
5	90,344	-2,826.00	-3.03%	71,124	78.73%	5,035	5.57%	12,842	14.21%	171	0.19%	1,172	1.30%	
6	96,438	3,268.00	3.51%	64,792	67.19%	13,688	14.19%	13,786	14.30%	2,354	2.44%	1,818	1.89%	
7	92,295	-875.00	-0.94%	42,714	46.28%	8,077	8.75%	38,528	41.74%	884	0.96%	2,092	2.27%	
8	94,547	1,377.00	1.48%	43,077	45.56%	6,000	6.35%	43,236	45.73%	316	0.33%	1,918	2.03%	
9	96,504	3,334.00	3.58%	20,135	20.86%	61,673	63.91%	7,062	7.32%	3,033	3.14%	4,601	4.77%	
10	96,132	2,962.00	3.18%	19,403	20.18%	35,053	36.46%	31,842	33.12%	6,114	6.36%	3,720	3.87%	
11	97,062	3,892.00	4.18%	31,550	32.50%	41,848	43.11%	14,692	15.14%	5,140	5.30%	3,832	3.95%	
12	95,253	2,083.00	2.24%	18,635	19.56%	42,177	44.28%	19,849	20.84%	9,840	10.33%	4,752	4.99%	
13	96,525	3,355.00	3.60%	21,277	22.04%	54,736	56.71%	9,235	9.57%	7,652	7.93%	3,625	3.76%	
14	89,162	-4,008.00	-4.30%	25,549	28.65%	47,036	52.75%	8,561	9.60%	4,432	4.97%	3,584	4.02%	
	1,304,379		9.06%	551,174	42.26%	366,393	28.09%	298,764	22.90%	47,820	3.67%	40,228	3.08%	

	Total Voting Age Population		Hispanic		NH-White		NH-Black		NH-Asian		NH-Other	
	#	%	#	%	#	%	#	%	#	%	#	%
1	64,569	52,020	80.56%	5,977	9.26%	5,104	7.90%	511	0.79%	957	1.48%	
2	76,046	34,755	45.70%	25,260	33.22%	9,566	12.58%	3,960	5.21%	2,505	3.29%	
3	65,343	22,966	35.15%	7,033	10.76%	32,415	49.61%	1,270	1.94%	1,659	2.54%	
4	66,509	24,503	36.84%	8,573	12.89%	30,472	45.82%	1,175	1.77%	1,786	2.69%	
5	62,934	47,445	75.39%	4,472	7.11%	10,073	16.01%	135	0.21%	809	1.29%	
6	71,718	45,183	63.00%	12,337	17.20%	10,910	15.21%	1,958	2.73%	1,330	1.85%	
7	66,895	28,573	42.71%	7,050	10.54%	29,017	43.38%	756	1.13%	1,499	2.24%	
8	64,168	26,583	41.43%	4,903	7.64%	31,156	48.55%	228	0.36%	1,298	2.02%	
9	78,108	14,667	18.78%	51,946	66.51%	5,667	7.26%	2,604	3.33%	3,224	4.13%	
10	71,587	13,184	18.42%	27,750	38.76%	23,636	33.02%	4,489	6.27%	2,528	3.53%	
11	77,584	22,237	28.66%	36,157	46.60%	11,851	15.28%	4,539	5.85%	2,800	3.61%	
12	77,505	13,751	17.74%	36,218	46.73%	15,492	19.99%	8,573	11.06%	3,471	4.48%	
13	76,800	15,044	19.59%	45,981	59.87%	7,502	9.77%	5,746	7.48%	2,527	3.29%	
14	79,939	20,051	25.08%	45,110	56.43%	7,396	9.25%	4,247	5.31%	3,135	3.92%	
	999,705	380,962	38.11%	318,767	31.89%	230,257	23.03%	40,191	4.02%	29,528	2.95%	



Sources: Esri, HERE, Garmin, USGS, Intermap, INCREMENT P, NRCan, Esri Japan, METI, Esri China (Hong Kong), Esri Korea, Esri (Thailand); NGCC, (c) OpenStreetMap contributors, and the GIS User Community





City of Dallas 2021-22 Redistricting

Submitted Map Analysis

Plan Summary – Plan ID: COD-041-A (Submitter: Cm. Norma Minnis)
This is an amendment to COD-041- MCVLA-DD

Date Submitted: - 5-2-22

Current Status: Meets the City of Dallas Redistricting Criteria

REVIEW CRITERIA FOR PLAN ACCEPTANCE

1. Maximum Deviation Less than 10%: Population Difference between most populated and least populated district divided by ideal population is less than 10%

Plan meets Criteria

Plan does not meet Criteria

Plan Max Deviation – 9.69%

2. Contiguity: All districts should be geographically contiguous.

Plan meets Criteria

Plan does not meet Criteria

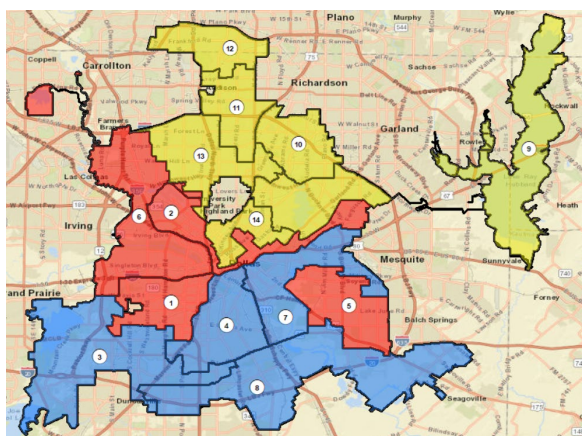
3. Unassigned Units – None

Plan meets Criteria

Plan does not meet Criteria

4. Other Map Characteristics for further evaluation:

1. No. of Minority Majority/Plurality Districts: 8 (Total Pop)



NH-Black – 4

(3, 4, 7, 8)

Hispanic – 4

(1, 2, 5, 6)

(NH White – Yellow, Hispanic – Red; NH Black – Blue)

Total Population by Race and Ethnicity

	Total Population	Deviation		Hispanic		NH-White		NH-Black		NH-Asian		NH-Other	
		#	%	#	%	#	%	#	%	#	%	#	%
1	97,686	4,516.00	4.85%	74,654	76.42%	14,233	14.57%	6,299	6.45%	633	0.65%	1,397	1.43%
2	93,067	-103.00	-0.11%	43,311	46.54%	29,240	31.42%	12,548	13.48%	4,332	4.65%	2,721	2.92%
3	94,020	850.00	0.91%	40,873	43.47%	7,957	8.46%	41,086	43.70%	1,491	1.59%	1,639	1.74%
4	88,662	-4,508.00	-4.84%	40,766	45.98%	4,227	4.77%	41,099	46.35%	388	0.44%	1,468	1.66%
5	93,392	222.00	0.24%	74,240	79.49%	5,283	5.66%	12,482	13.37%	161	0.17%	825	0.88%
6	90,516	-2,654.00	-2.85%	63,037	69.64%	10,819	11.95%	12,984	14.34%	1,719	1.90%	1,216	1.34%
7	88,929	-4,241.00	-4.55%	39,172	44.05%	7,575	8.52%	39,270	44.16%	715	0.80%	1,490	1.68%
8	89,377	-3,793.00	-4.07%	40,708	45.55%	5,739	6.42%	40,825	45.68%	202	0.23%	1,234	1.38%
9	90,978	-2,192.00	-2.35%	27,470	30.19%	45,450	49.96%	10,133	11.14%	3,520	3.87%	2,683	2.95%
10	96,197	3,027.00	3.25%	19,423	20.19%	35,060	36.45%	31,879	33.14%	4,489	4.67%	2,529	2.63%
11	97,049	3,879.00	4.16%	31,545	32.50%	41,843	43.12%	14,691	15.14%	4,539	4.68%	2,798	2.88%
12	95,266	2,096.00	2.25%	18,640	19.57%	42,182	44.28%	19,850	20.84%	8,573	9.00%	3,473	3.65%
13	94,125	955.00	1.03%	22,977	24.41%	52,995	56.30%	8,219	8.73%	4,783	5.08%	2,280	2.42%
14	95,115	1,945.00	2.09%	14,358	15.10%	63,790	67.07%	7,399	7.78%	4,646	4.88%	3,775	3.97%
	1,304,379	9.69%		551,174	42.26%	366,393	28.09%	298,764	22.90%	40,191	3.08%	29,528	2.26%

Total Voting Age Population by Race and Ethnicity

	Total Voting Age Population	Hispanic		NH-White		NH-Black		NH-Asian		NH-Other	
		#	%	#	%	#	%	#	%	#	%
1	73,528	53,588	72.88%	12,597	17.13%	5,313	7.23%	633	0.86%	1,397	1.90%
2	77,257	32,277	41.78%	27,496	35.59%	10,431	13.50%	4,332	5.61%	2,721	3.52%
3	68,280	27,392	40.12%	7,067	10.35%	30,691	44.95%	1,491	2.18%	1,639	2.40%
4	64,021	26,267	41.03%	3,741	5.84%	32,157	50.23%	388	0.61%	1,468	2.29%
5	64,942	49,435	76.12%	4,697	7.23%	9,824	15.13%	161	0.25%	825	1.27%
6	67,177	43,905	65.36%	9,931	14.78%	10,406	15.49%	1,719	2.56%	1,216	1.81%
7	64,643	26,137	40.43%	6,622	10.24%	29,679	45.91%	715	1.11%	1,490	2.30%
8	61,049	25,114	41.14%	4,674	7.66%	29,825	48.85%	202	0.33%	1,234	2.02%
9	72,418	19,493	26.92%	38,722	53.47%	8,000	11.05%	3,520	4.86%	2,683	3.70%
10	71,621	13,196	18.42%	27,750	38.75%	23,657	33.03%	4,489	6.27%	2,529	3.53%
11	77,573	22,232	28.66%	36,153	46.61%	11,851	15.28%	4,539	5.85%	2,798	3.61%
12	77,516	13,756	17.75%	36,222	46.73%	15,492	19.99%	8,573	11.06%	3,473	4.48%
13	73,859	16,147	21.86%	44,009	59.59%	6,640	8.99%	4,783	6.48%	2,280	3.09%
14	85,821	12,023	14.01%	59,086	68.85%	6,291	7.33%	4,646	5.41%	3,775	4.40%
	999,705	380,962	38.11%	318,767	31.89%	230,257	23.03%	40,191	4.02%	29,528	2.95%

The Majority/Plurality District percentages are in bold

2. No. of Neighborhoods splits - 46 out of 443 Neighborhood Associations

3. Compactness analysis for each district:

District	Area:	Perimeter:	Reock	Polsby-Popper	Convex Hull Ratio:	Schwartzberg
District 1	16.67	27.63	0.36	0.27	0.74	0.52
District 2	18.39	46.97	0.12	0.10	0.36	0.32
District 3	48.53	68.11	0.25	0.13	0.60	0.36
District 4	22.76	24.73	0.32	0.47	0.84	0.68
District 5	20.97	26.29	0.36	0.38	0.81	0.62
District 6	40.16	72.60	0.15	0.10	0.41	0.31
District 7	24.46	38.93	0.23	0.20	0.56	0.45
District 8	53.23	66.07	0.16	0.15	0.59	0.39
District 9	58.43	118.40	0.12	0.05	0.32	0.23
District 10	16.43	21.69	0.38	0.44	0.85	0.66
District 11	15.17	24.36	0.31	0.32	0.73	0.57
District 12	14.71	21.13	0.30	0.41	0.81	0.64
District 13	23.54	38.43	0.23	0.20	0.65	0.45
District 14	9.90	23.52	0.25	0.22	0.65	0.47
Average	27.38	44.20	0.25	0.25	0.64	0.48



2021-22 City of Dallas Redistricting- Plan Submission - COD-041-A submitted on 5-2-22 by Cm. Norma Minnis as an Amendment to COD-041-MCVLA-DD

Map Meets the Redistricting Criteria

General Information	
Plan-ID	COD-041-A
Submitted By	Cm. Norma Minnis
Submitted On	5/2/2022
Status	Meets Criteria
Deviation, Area and Perimeter	
Maximum Deviation	9.69%
Average Area	27.38
Average Perimeter	44.20
Average Compactness Scores	
Average Reock Score	0.25
Average Polsby-Popper Score	0.25
Average Convex Hull Score	0.64
Average Schwartzberg Score	0.48
Minority Majority Districts	
Number of Minority/Plurality Districts	8(4 NHB, 4 Hisp)
Number of Neighborhood splits	46

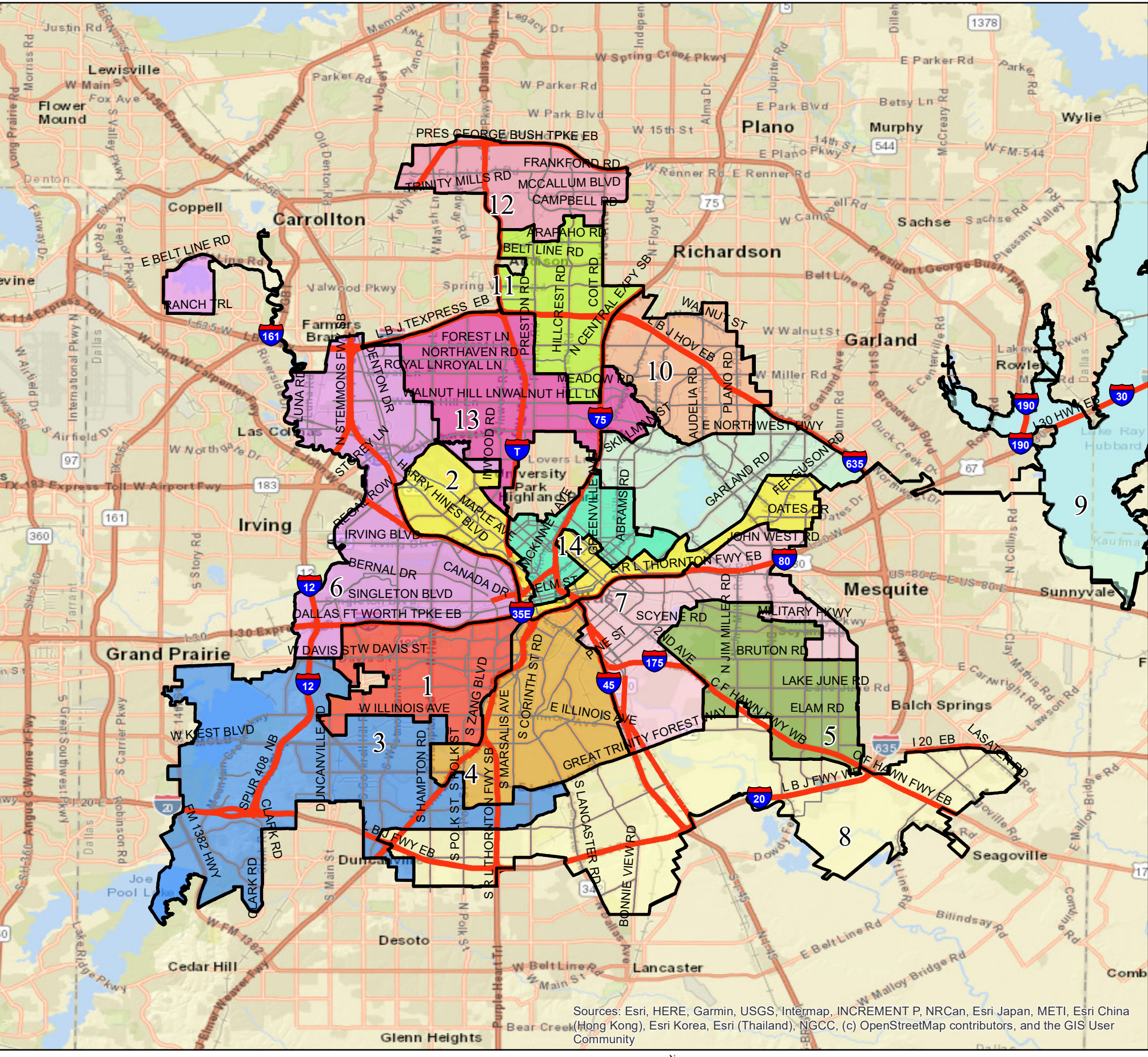
Highways

Districts

█ 1	█ 8
█ 2	█ 9
█ 3	█ 10
█ 4	█ 11
█ 5	█ 12
█ 6	█ 13
█ 7	█ 14

	Total Population		Deviation		Hispanic		NH-White		NH-Black		NH-Asian		NH-Other	
	#	%	#	%	#	%	#	%	#	%	#	%	#	%
1	97,686	4,516.00	4.85%	74,654	76.42%	14,233	14.57%	6,299	6.45%	633	0.65%	1,397	1.43%	
2	93,067	-103.00	-0.11%	43,311	46.54%	29,240	31.42%	12,548	13.48%	4,332	4.65%	2,721	2.92%	
3	94,020	850.00	0.91%	40,873	43.47%	7,957	8.46%	41,086	43.70%	1,491	1.59%	1,639	1.74%	
4	88,662	-4,508.00	-4.84%	40,766	45.98%	4,227	4.77%	41,099	46.35%	388	0.44%	1,468	1.66%	
5	93,392	222.00	0.24%	74,240	79.49%	5,283	5.66%	12,482	13.37%	161	0.17%	825	0.88%	
6	90,516	-2,654.00	-2.85%	63,037	69.64%	10,819	11.95%	12,984	14.34%	1,719	1.90%	1,216	1.34%	
7	88,929	-4,241.00	-4.55%	39,172	44.05%	7,575	8.52%	39,270	44.16%	715	0.80%	1,490	1.68%	
8	89,377	-3,793.00	-4.07%	40,708	45.55%	5,739	6.42%	40,825	45.68%	202	0.23%	1,234	1.38%	
9	90,978	-2,192.00	-2.35%	27,470	30.19%	45,450	49.96%	10,133	11.14%	3,520	3.87%	2,683	2.95%	
10	96,197	3,027.00	3.25%	19,423	20.19%	35,060	36.45%	31,879	33.14%	4,489	4.67%	2,529	2.63%	
11	97,049	3,879.00	4.16%	31,545	32.50%	41,843	43.12%	14,691	15.14%	4,539	4.68%	2,798	2.88%	
12	95,266	2,096.00	2.25%	18,640	19.57%	42,182	44.28%	19,850	20.84%	8,573	9.00%	3,473	3.65%	
13	94,125	955.00	1.03%	22,977	24.41%	52,995	56.30%	8,219	8.73%	4,783	5.08%	2,280	2.42%	
14	95,115	1,945.00	2.09%	14,358	15.10%	63,790	67.07%	7,399	7.78%	4,646	4.88%	3,775	3.97%	
	1,304,379		9.69%	551,174	42.26%	366,393	28.09%	298,764	22.90%	40,191	3.08%	29,528	2.26%	

	Total Voting Age Population		Hispanic		NH-White		NH-Black		NH-Asian		NH-Other	
	#	%	#	%	#	%	#	%	#	%	#	%
1	73,528	53,588	72.88%	12,597	17.13%	5,313	7.23%	633	0.86%	1,397	1.90%	
2	77,257	32,277	41.78%	27,496	35.59%	10,431	13.50%	4,332	5.61%	2,721	3.52%	
3	68,280	27,392	40.12%	7,067	10.35%	30,691	44.95%	1,491	2.18%	1,639	2.40%	
4	64,021	26,267	41.03%	3,741	5.84%	32,157	50.23%	388	0.61%	1,468	2.29%	
5	64,942	49,435	76.12%	4,697	7.23%	9,824	15.13%	161	0.25%	825	1.27%	
6	67,177	43,905	65.36%	9,931	14.78%	10,406	15.49%	1,719	2.56%	1,216	1.81%	
7	64,643	26,137	40.43%	6,622	10.24%	29,679	45.91%	715	1.11%	1,490	2.30%	
8	61,049	25,114	41.14%	4,674	7.66%	29,825	48.85%	202	0.33%	1,234	2.02%	
9	72,418	19,493	26.92%	38,722	53.47%	8,000	11.05%	3,520	4.86%	2,683	3.70%	
10	71,621	13,196	18.42%	27,750	38.75%	23,657	33.03%	4,489	6.27%	2,529	3.53%	
11	77,573	22,232	28.66%	36,153	46.61%	11,851	15.28%	4,539	5.85%	2,798	3.61%	
12	77,516	13,756	17.75%	36,222	46.73%	15,492	19.99%	8,573	11.06%	3,473	4.48%	
13	73,859	16,147	21.86%	44,009	59.59%	6,640	8.99%	4,783	6.48%	2,280	3.09%	
14	85,821	12,023	14.01%	59,086	68.85%	6,291	7.33%	4,646	5.41%	3,775	4.40%	
	999,705	380,962	38.11%	318,767	31.89%	230,257	23.03%	40,191	4.02%	29,528	2.95%	



Sources: Esri, HERE, Garmin, USGS, Intermap, INCREMENT P, NRCan, Esri Japan, METI, Esri China (Hong Kong), Esri Korea, Esri (Thailand), NGCC, (c) OpenStreetMap contributors, and the GIS User Community