



## City of Dallas 2021-22 Redistricting

### Submitted Map Analysis

**Plan Summary** – Plan ID: COD-041-A (Submitter: Cm. Norma Minnis)  
This is an amendment to COD-041- MCVLA-DD

**Date Submitted:** - 5-2-22

**Current Status:** Meets the City of Dallas Redistricting Criteria

#### REVIEW CRITERIA FOR PLAN ACCEPTANCE

**1. Maximum Deviation Less than 10%:** Population Difference between most populated and least populated district divided by ideal population is less than 10%

**Plan meets Criteria**

**Plan does not meet Criteria**

Plan Max Deviation – 9.69%

**2. Contiguity:** All districts should be geographically contiguous.

**Plan meets Criteria**

**Plan does not meet Criteria**

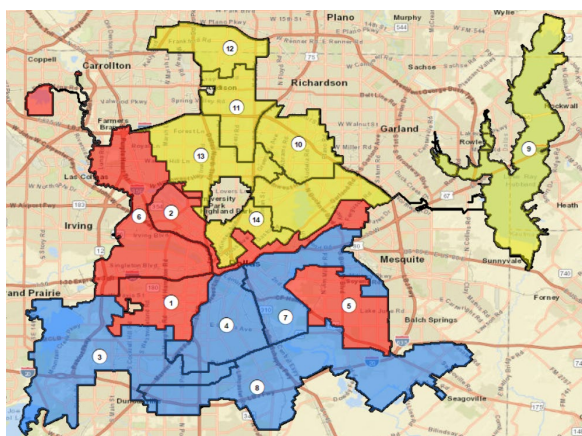
**3. Unassigned Units – None**

**Plan meets Criteria**

**Plan does not meet Criteria**

**4. Other Map Characteristics for further evaluation:**

**1. No. of Minority Majority/Plurality Districts: 8 (Total Pop)**



NH-Black – 4

(3, 4, 7, 8)

Hispanic – 4

(1, 2, 5, 6)

(NH White – Yellow, Hispanic – Red; NH Black – Blue)

### Total Population by Race and Ethnicity

	Total Population	Deviation		Hispanic		NH-White		NH-Black		NH-Asian		NH-Other	
		#	%	#	%	#	%	#	%	#	%	#	%
1	97,686	4,516.00	4.85%	74,654	<b>76.42%</b>	14,233	14.57%	6,299	6.45%	633	0.65%	1,397	1.43%
2	93,067	-103.00	-0.11%	43,311	<b>46.54%</b>	29,240	31.42%	12,548	13.48%	4,332	4.65%	2,721	2.92%
3	94,020	850.00	0.91%	40,873	43.47%	7,957	8.46%	41,086	<b>43.70%</b>	1,491	1.59%	1,639	1.74%
4	88,662	-4,508.00	-4.84%	40,766	45.98%	4,227	4.77%	41,099	<b>46.35%</b>	388	0.44%	1,468	1.66%
5	93,392	222.00	0.24%	74,240	<b>79.49%</b>	5,283	5.66%	12,482	13.37%	161	0.17%	825	0.88%
6	90,516	-2,654.00	-2.85%	63,037	<b>69.64%</b>	10,819	11.95%	12,984	14.34%	1,719	1.90%	1,216	1.34%
7	88,929	-4,241.00	-4.55%	39,172	44.05%	7,575	8.52%	39,270	<b>44.16%</b>	715	0.80%	1,490	1.68%
8	89,377	-3,793.00	-4.07%	40,708	45.55%	5,739	6.42%	40,825	<b>45.68%</b>	202	0.23%	1,234	1.38%
9	90,978	-2,192.00	-2.35%	27,470	30.19%	45,450	49.96%	10,133	11.14%	3,520	3.87%	2,683	2.95%
10	96,197	3,027.00	3.25%	19,423	20.19%	35,060	36.45%	31,879	33.14%	4,489	4.67%	2,529	2.63%
11	97,049	3,879.00	4.16%	31,545	32.50%	41,843	43.12%	14,691	15.14%	4,539	4.68%	2,798	2.88%
12	95,266	2,096.00	2.25%	18,640	19.57%	42,182	44.28%	19,850	20.84%	8,573	9.00%	3,473	3.65%
13	94,125	955.00	1.03%	22,977	24.41%	52,995	56.30%	8,219	8.73%	4,783	5.08%	2,280	2.42%
14	95,115	1,945.00	2.09%	14,358	15.10%	63,790	67.07%	7,399	7.78%	4,646	4.88%	3,775	3.97%
	1,304,379	9.69%		551,174	42.26%	366,393	28.09%	298,764	22.90%	40,191	3.08%	29,528	2.26%

### Total Voting Age Population by Race and Ethnicity

	Total Voting Age Population	Hispanic		NH-White		NH-Black		NH-Asian		NH-Other	
		#	%	#	%	#	%	#	%	#	%
1	73,528	53,588	<b>72.88%</b>	12,597	17.13%	5,313	7.23%	633	0.86%	1,397	1.90%
2	77,257	32,277	<b>41.78%</b>	27,496	35.59%	10,431	13.50%	4,332	5.61%	2,721	3.52%
3	68,280	27,392	40.12%	7,067	10.35%	30,691	<b>44.95%</b>	1,491	2.18%	1,639	2.40%
4	64,021	26,267	41.03%	3,741	5.84%	32,157	<b>50.23%</b>	388	0.61%	1,468	2.29%
5	64,942	49,435	<b>76.12%</b>	4,697	7.23%	9,824	15.13%	161	0.25%	825	1.27%
6	67,177	43,905	<b>65.36%</b>	9,931	14.78%	10,406	15.49%	1,719	2.56%	1,216	1.81%
7	64,643	26,137	40.43%	6,622	10.24%	29,679	<b>45.91%</b>	715	1.11%	1,490	2.30%
8	61,049	25,114	41.14%	4,674	7.66%	29,825	<b>48.85%</b>	202	0.33%	1,234	2.02%
9	72,418	19,493	26.92%	38,722	53.47%	8,000	11.05%	3,520	4.86%	2,683	3.70%
10	71,621	13,196	18.42%	27,750	38.75%	23,657	33.03%	4,489	6.27%	2,529	3.53%
11	77,573	22,232	28.66%	36,153	46.61%	11,851	15.28%	4,539	5.85%	2,798	3.61%
12	77,516	13,756	17.75%	36,222	46.73%	15,492	19.99%	8,573	11.06%	3,473	4.48%
13	73,859	16,147	21.86%	44,009	59.59%	6,640	8.99%	4,783	6.48%	2,280	3.09%
14	85,821	12,023	14.01%	59,086	68.85%	6,291	7.33%	4,646	5.41%	3,775	4.40%
	999,705	380,962	38.11%	318,767	31.89%	230,257	23.03%	40,191	4.02%	29,528	2.95%

The Majority/Plurality District percentages are in bold

## 2. No. of Neighborhoods splits - 46 out of 443 Neighborhood Associations

### 3. Compactness analysis for each district:

District	Area:	Perimeter:	Reock	Polsby-Popper	Convex Hull Ratio:	Schwartzberg
District 1	16.67	27.63	0.36	0.27	0.74	0.52
District 2	18.39	46.97	0.12	0.10	0.36	0.32
District 3	48.53	68.11	0.25	0.13	0.60	0.36
District 4	22.76	24.73	0.32	0.47	0.84	0.68
District 5	20.97	26.29	0.36	0.38	0.81	0.62
District 6	40.16	72.60	0.15	0.10	0.41	0.31
District 7	24.46	38.93	0.23	0.20	0.56	0.45
District 8	53.23	66.07	0.16	0.15	0.59	0.39
District 9	58.43	118.40	0.12	0.05	0.32	0.23
District 10	16.43	21.69	0.38	0.44	0.85	0.66
District 11	15.17	24.36	0.31	0.32	0.73	0.57
District 12	14.71	21.13	0.30	0.41	0.81	0.64
District 13	23.54	38.43	0.23	0.20	0.65	0.45
District 14	9.90	23.52	0.25	0.22	0.65	0.47
<b>Average</b>	<b>27.38</b>	<b>44.20</b>	<b>0.25</b>	<b>0.25</b>	<b>0.64</b>	<b>0.48</b>





# 2021-22 City of Dallas Redistricting- Plan Submission - COD-041-A submitted on 5-2-22 by Cm. Norma Minnis as an Amendment to COD-041-MCVLA-DD

Map Meets the Redistricting Criteria

General Information	
Plan-ID	COD-041-A
Submitted By	Cm. Norma Minnis
Submitted On	5/2/2022
Status	Meets Criteria
Deviation, Area and Perimeter	
Maximum Deviation	9.69%
Average Area	27.38
Average Perimeter	44.20
Average Compactness Scores	
Average Reock Score	0.25
Average Polsby-Popper Score	0.25
Average Convex Hull Score	0.64
Average Schwartzberg Score	0.48
Minority Majority Districts	
Number of Minority/Plurality Districts	8(4 NHB, 4 Hisp)
Number of Neighborhood splits	46

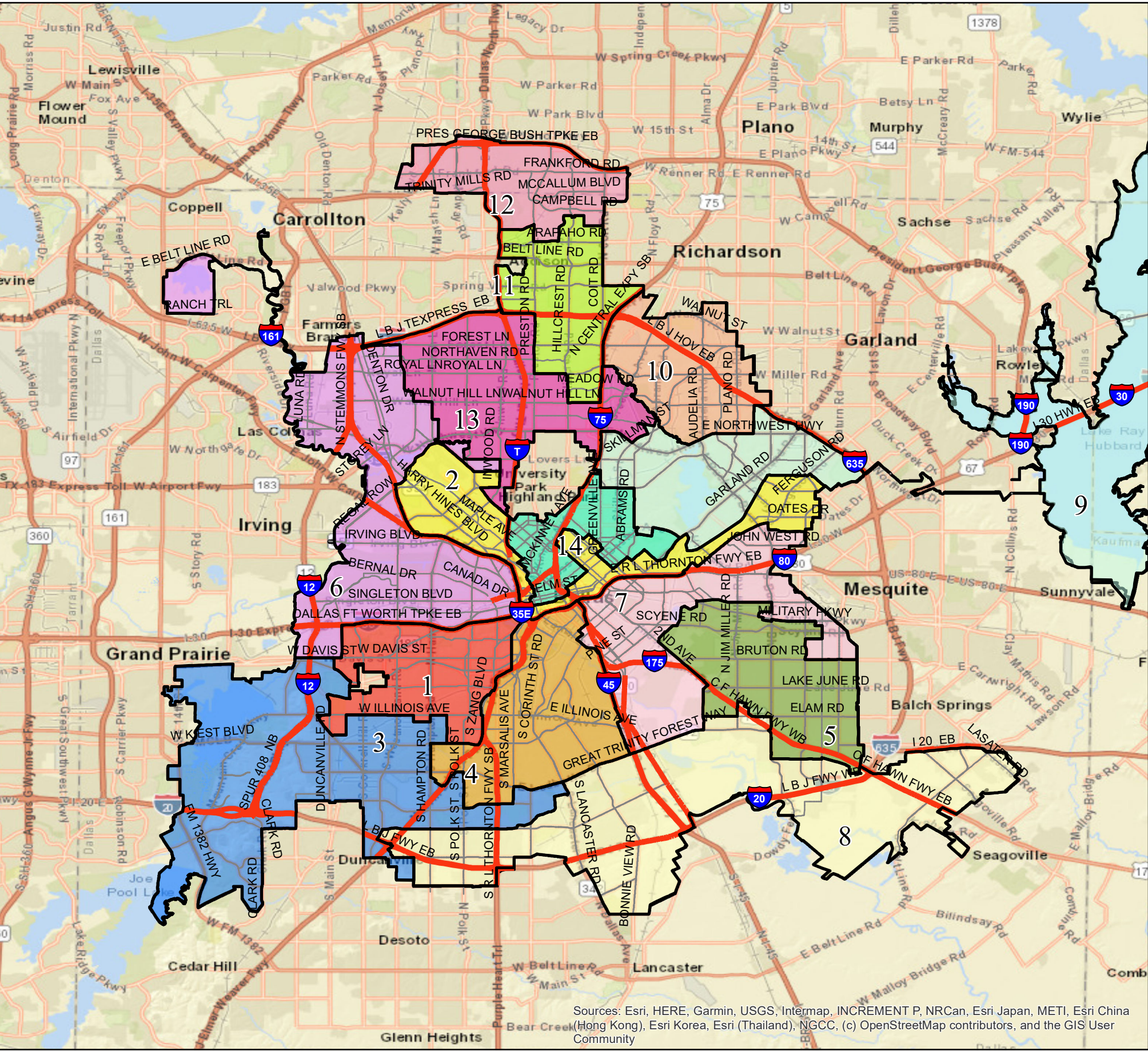
**Highways**

**Districts**

<span style="color: red;">█</span> 1	<span style="color: yellow;">█</span> 8
<span style="color: orange;">█</span> 2	<span style="color: lightgreen;">█</span> 9
<span style="color: blue;">█</span> 3	<span style="color: lightorange;">█</span> 10
<span style="color: gold;">█</span> 4	<span style="color: lightyellow;">█</span> 11
<span style="color: green;">█</span> 5	<span style="color: pink;">█</span> 12
<span style="color: purple;">█</span> 6	<span style="color: magenta;">█</span> 13
<span style="color: lightpurple;">█</span> 7	<span style="color: cyan;">█</span> 14

	Total Population		Deviation		Hispanic		NH-White		NH-Black		NH-Asian		NH-Other	
	#	%	#	%	#	%	#	%	#	%	#	%	#	%
1	97,686	4,516.00	4.85%	74,654	76.42%	14,233	14.57%	6,299	6.45%	633	0.65%	1,397	1.43%	
2	93,067	-103.00	-0.11%	43,311	46.54%	29,240	31.42%	12,548	13.48%	4,332	4.65%	2,721	2.92%	
3	94,020	850.00	0.91%	40,873	43.47%	7,957	8.46%	41,086	43.70%	1,491	1.59%	1,639	1.74%	
4	88,662	-4,508.00	-4.84%	40,766	45.98%	4,227	4.77%	41,099	46.35%	388	0.44%	1,468	1.66%	
5	93,392	222.00	0.24%	74,240	79.49%	5,283	5.66%	12,482	13.37%	161	0.17%	825	0.88%	
6	90,516	-2,654.00	-2.85%	63,037	69.64%	10,819	11.95%	12,984	14.34%	1,719	1.90%	1,216	1.34%	
7	88,929	-4,241.00	-4.55%	39,172	44.05%	7,575	8.52%	39,270	44.16%	715	0.80%	1,490	1.68%	
8	89,377	-3,793.00	-4.07%	40,708	45.55%	5,739	6.42%	40,825	45.68%	202	0.23%	1,234	1.38%	
9	90,978	-2,192.00	-2.35%	27,470	30.19%	45,450	49.96%	10,133	11.14%	3,520	3.87%	2,683	2.95%	
10	96,197	3,027.00	3.25%	19,423	20.19%	35,060	36.45%	31,879	33.14%	4,489	4.67%	2,529	2.63%	
11	97,049	3,879.00	4.16%	31,545	32.50%	41,843	43.12%	14,691	15.14%	4,539	4.68%	2,798	2.88%	
12	95,266	2,096.00	2.25%	18,640	19.57%	42,182	44.28%	19,850	20.84%	8,573	9.00%	3,473	3.65%	
13	94,125	955.00	1.03%	22,977	24.41%	52,995	56.30%	8,219	8.73%	4,783	5.08%	2,280	2.42%	
14	95,115	1,945.00	2.09%	14,358	15.10%	63,790	67.07%	7,399	7.78%	4,646	4.88%	3,775	3.97%	
	1,304,379		9.69%	551,174	42.26%	366,393	28.09%	298,764	22.90%	40,191	3.08%	29,528	2.26%	

	Total Voting Age Population		Hispanic		NH-White		NH-Black		NH-Asian		NH-Other	
	#	%	#	%	#	%	#	%	#	%	#	%
1	73,528	53,588	72.88%	12,597	17.13%	5,313	7.23%	633	0.86%	1,397	1.90%	
2	77,257	32,277	41.78%	27,496	35.59%	10,431	13.50%	4,332	5.61%	2,721	3.52%	
3	68,280	27,392	40.12%	7,067	10.35%	30,691	44.95%	1,491	2.18%	1,639	2.40%	
4	64,021	26,267	41.03%	3,741	5.84%	32,157	50.23%	388	0.61%	1,468	2.29%	
5	64,942	49,435	76.12%	4,697	7.23%	9,824	15.13%	161	0.25%	825	1.27%	
6	67,177	43,905	65.36%	9,931	14.78%	10,406	15.49%	1,719	2.56%	1,216	1.81%	
7	64,643	26,137	40.43%	6,622	10.24%	29,679	45.91%	715	1.11%	1,490	2.30%	
8	61,049	25,114	41.14%	4,674	7.66%	29,825	48.85%	202	0.33%	1,234	2.02%	
9	72,418	19,493	26.92%	38,722	53.47%	8,000	11.05%	3,520	4.86%	2,683	3.70%	
10	71,621	13,196	18.42%	27,750	38.75%	23,657	33.03%	4,489	6.27%	2,529	3.53%	
11	77,573	22,232	28.66%	36,153	46.61%	11,851	15.28%	4,539	5.85%	2,798	3.61%	
12	77,516	13,756	17.75%	36,222	46.73%	15,492	19.99%	8,573	11.06%	3,473	4.48%	
13	73,859	16,147	21.86%	44,009	59.59%	6,640	8.99%	4,783	6.48%	2,280	3.09%	
14	85,821	12,023	14.01%	59,086	68.85%	6,291	7.33%	4,646	5.41%	3,775	4.40%	
	999,705	380,962	38.11%	318,767	31.89%	230,257	23.03%	40,191	4.02%	29,528	2.95%	



Sources: Esri, HERE, Garmin, USGS, Intermap, INCREMENT P, NRCan, Esri Japan, METI, Esri China (Hong Kong), Esri Korea, Esri (Thailand), NGCC, (c) OpenStreetMap contributors, and the GIS User Community

