



## City of Dallas 2021-22 Redistricting

# Analysis of Redistricting Plan adopted by the City Council on 6-27-2022

**Plan Summary** – The final plan was adopted by the City Council on 6/27/2022

**Date Approved by the City Council – 6/27/2022**

**Current Status:** Plan meets the City of Dallas Redistricting Criteria

### REVIEW CRITERIA FOR PLAN ACCEPTANCE

**1. Maximum Deviation Less than 10%:** Population Difference between most populated and least populated district divided by ideal population is less than 10%

**Plan meets Criteria**

**Plan does not meet Criteria**

Plan Max Deviation – 9.97%

**2. Contiguity:** All districts should be geographically contiguous.

**Plan meets Criteria**

**Plan does not meet Criteria**

**3. Unassigned Units – None**

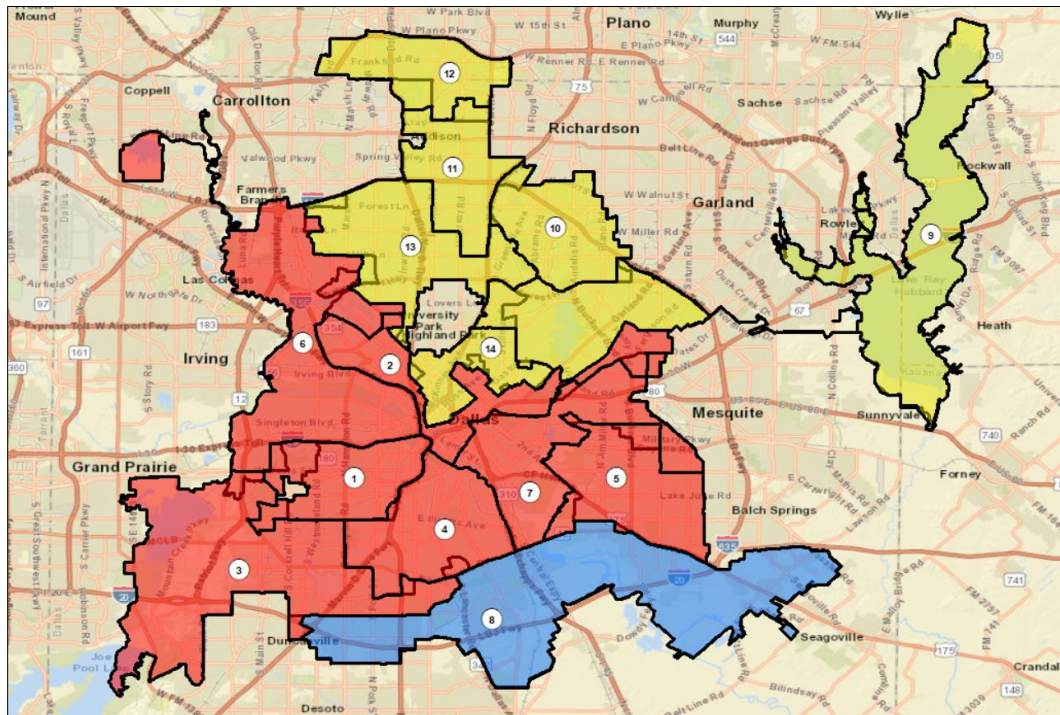
**Plan meets Criteria**

**Plan does not meet Criteria**

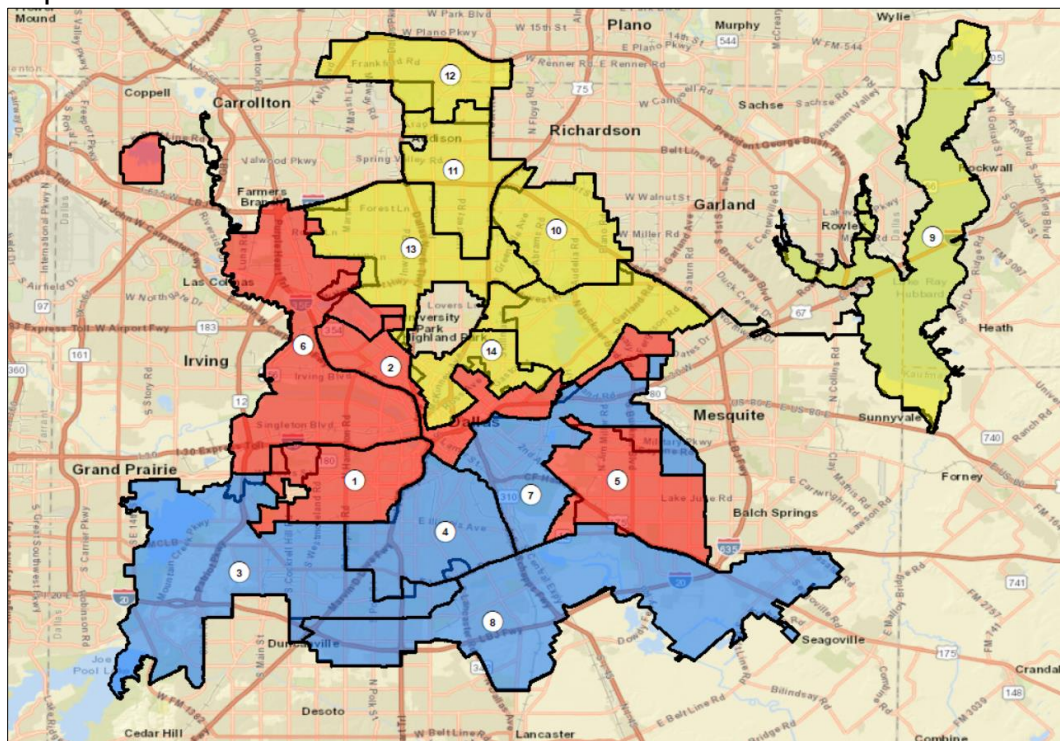
**4. Other Map Characteristics:**

**1.** No. of Minority Majority/Plurality Districts Based on Total Population: 8 (D1, D2, D3, D4, D5, D6, D7 Hispanic, D8 NH Black))

**2.** No. of Minority Majority/Plurality Districts Based on Voting Age Population: 8 (D1, D2, D5, D6 Hispanic, D3, D4, D7, D8 NH Black)



Map showing Minority Majority/Plurality Districts based on Total Population



Map showing Minority Majority/Plurality Districts based on Voting Age Population

(NH White – Yellow, Hispanic – Red; NH Black – Blue)

### Total Population by Race and Ethnicity

	Total Population	Deviation		Hispanic		NH-White		NH-Black		NH-Asian		NH-Other	
		#	%	#	%	#	%	#	%	#	%	#	%
1	89,740	-3,430.00	-3.68%	68,037	<b>75.82%</b>	13,858	15.44%	5,447	6.07%	673	0.75%	1,725	1.92%
2	92,292	-878.00	-0.94%	42,711	<b>46.28%</b>	27,959	30.29%	13,810	14.96%	4,598	4.98%	3,214	3.48%
3	92,578	-592.00	-0.64%	40,962	<b>44.25%</b>	7,963	8.60%	39,564	42.74%	1,797	1.94%	2,292	2.48%
4	92,100	-1,070.00	-1.15%	46,510	<b>50.50%</b>	3,436	3.73%	39,745	43.15%	444	0.48%	1,965	2.13%
5	87,764	-5,406.00	-5.80%	68,676	<b>78.25%</b>	4,721	5.38%	13,069	14.89%	179	0.20%	1,119	1.28%
6	89,247	-3,923.00	-4.21%	62,691	<b>70.24%</b>	10,261	11.50%	12,807	14.35%	1,925	2.16%	1,563	1.75%
7	88,841	-4,329.00	-4.65%	39,695	<b>44.68%</b>	7,990	8.99%	38,282	43.09%	776	0.87%	2,098	2.36%
8	94,503	1,333.00	1.43%	43,053	45.56%	6,000	6.35%	43,224	<b>45.74%</b>	316	0.33%	1,910	2.02%
9	96,998	3,828.00	4.11%	31,163	32.13%	47,344	48.81%	10,179	10.49%	4,252	4.38%	4,060	4.19%
10	96,197	3,027.00	3.25%	19,423	20.19%	35,060	36.45%	31,879	33.14%	6,114	6.36%	3,721	3.87%
11	97,049	3,879.00	4.16%	31,545	32.50%	41,843	43.12%	14,691	15.14%	5,140	5.30%	3,830	3.95%
12	95,266	2,096.00	2.25%	18,640	19.57%	42,182	44.28%	19,850	20.84%	9,840	10.33%	4,754	4.99%
13	96,393	3,223.00	3.46%	23,894	24.79%	53,586	55.59%	8,734	9.06%	6,764	7.02%	3,415	3.54%
14	95,411	2,241.00	2.41%	14,174	14.86%	64,190	67.28%	7,483	7.84%	5,002	5.24%	4,562	4.78%
	1,304,379	9.97%		551,174	42.26%	366,393	28.09%	298,764	22.90%	47,820	3.67%	40,228	3.08%

### Total Voting Age Population by Race and Ethnicity

	Total Voting Age Population	Hispanic		NH-White		NH-Black		NH-Asian		NH-Other	
		#	%	#	%	#	%	#	%	#	%
1	67,774	48,934	<b>72.20%</b>	12,272	18.11%	4,626	6.83%	597	0.88%	1,345	1.98%
2	76,463	32,003	<b>41.85%</b>	26,246	34.33%	11,329	14.82%	4,215	5.51%	2,670	3.49%
3	67,772	27,456	40.51%	7,060	10.42%	30,120	<b>44.44%</b>	1,495	2.21%	1,641	2.42%
4	66,051	30,280	45.84%	2,981	4.51%	31,071	<b>47.04%</b>	369	0.56%	1,350	2.04%
5	61,100	45,843	<b>75.03%</b>	4,169	6.82%	10,164	16.64%	146	0.24%	778	1.27%
6	66,105	43,671	<b>66.06%</b>	9,419	14.25%	10,243	15.50%	1,604	2.43%	1,168	1.77%
7	64,477	26,216	40.66%	7,044	10.92%	29,040	<b>45.04%</b>	663	1.03%	1,514	2.35%
8	64,148	26,575	41.43%	4,903	7.64%	31,147	<b>48.55%</b>	228	0.36%	1,295	2.02%
9	77,276	22,147	28.66%	40,486	52.39%	8,095	10.48%	3,701	4.79%	2,847	3.68%
10	71,621	13,196	18.42%	27,750	38.75%	23,657	33.03%	4,489	6.27%	2,529	3.53%
11	77,573	22,232	28.66%	36,153	46.61%	11,851	15.28%	4,539	5.85%	2,798	3.61%
12	77,516	13,756	17.75%	36,222	46.73%	15,492	19.99%	8,573	11.06%	3,473	4.48%
13	75,580	16,730	22.14%	44,549	58.94%	7,039	9.31%	4,919	6.51%	2,343	3.10%
14	86,249	11,923	13.82%	59,513	69.00%	6,383	7.40%	4,653	5.39%	3,777	4.38%
	999,705	380,962	38.11%	318,767	31.89%	230,257	23.03%	40,191	4.02%	29,528	2.95%

The Majority/Plurality District percentages are in bold

### 3. No. of Neighborhoods splits - 42 out of 443 Neighborhood Associations

### 4. Compactness analysis for each district:

District	Area:	Perimeter:	Reock	Polsby-Popper	Convex Hull Ratio:	Schwartzberg
District 1	16.01	25.83	0.34	0.30	0.79	0.55
District 2	17.72	50.68	0.11	0.09	0.36	0.29
District 3	48.37	63.67	0.25	0.15	0.62	0.39
District 4	21.03	21.74	0.35	0.56	0.85	0.75
District 5	21.08	27.74	0.36	0.34	0.71	0.59
District 6	41.83	73.38	0.15	0.10	0.44	0.31
District 7	23.51	43.47	0.20	0.16	0.52	0.40
District 8	54.40	64.15	0.17	0.17	0.61	0.41
District 9	59.31	117.74	0.12	0.05	0.32	0.23
District 10	16.43	21.69	0.38	0.44	0.85	0.66
District 11	15.17	24.40	0.31	0.32	0.73	0.57
District 12	14.71	21.35	0.30	0.41	0.80	0.64
District 13	24.05	37.49	0.25	0.22	0.66	0.46
District 14	9.73	22.26	0.28	0.25	0.68	0.50
<b>Average</b>	<b>27.38</b>	<b>43.97</b>	<b>0.26</b>	<b>0.25</b>	<b>0.64</b>	<b>0.48</b>